

DELHI TRANSCO LTD.

STATE LOAD DISPATCH CENTER

PROGRESS REPORT

FEBRUARY 2018

| S. No. | CONTENTS | Page No. |
|---------------|--|-----------------|
| 1. | Salient Features of Delhi Power System | 3 |
| 2. | Performance of Generating Stations within Delhi | 4 |
| 3. | Details of Outage of Generating Stations within Delhi | 5-20 |
| 4. | Allocation of Power to Delhi from unallocated quota of central sector | 21 |
| 5. | Allocation of Power to Discoms | 22 |
| 6. | Power Availability Demand Position of Delhi at the time of occurrence of Peak Demand | 23 |
| 7. | Power Availability Demand Position of Delhi at the time of occurrence of Maximum Un-Restricted Demand | 24 |
| 8. | Source wise scheduled drawl from grid and Availability within Delhi | 25-28 |
| 9. | Shedding Details | 29-33 |
| 10. | Load Curve for the Day of Peak Demand | 34 |
| 11. | Load Curve for the day of occurrence of Maximum Un-Restricted Demand | 35 |
| 12. | Load Curve for the day of Maximum Energy Consumed | 36 |
| 13. | Load Curve for the day of Maximum Un-Restricted Energy Demand | 37 |
| 14. | Load Duration Curve | 38 |
| 15. | Frequency Analysis | 39 |
| 16. | Voltage Profile for significant 220kV Sub-Stations | 40 |
| 17. | Voltage Profile for significant 400kV Sub-Stations | 41-42 |
| 18. | Details of Capacitors Installations in Delhi | 43-48 |
| 19. | Tripping Details of 400/220 KV System in Delhi Power System | 49-51 |
| 20. | Details of Under frequency Relay operations in Delhi Power System | 52 |

1 **SALIENT FEATURES OF DELHI POWER SYSTEM**

| Sr. No. | Features | FEB. 2017 | FEB. 2018 |
|---------|--|-----------------|-----------------|
| 1 | Effective Generation Capacity within Delhi in MW | | |
| | Rajghat Power House | 135 | 135 |
| | Gas Turbine | 270 | 270 |
| | Pragati Power Corporation Ltd. | 330 | 330 |
| | Badapur Thermal Power Station | 705 | 705 |
| | Rithala GT | 108 | 108 |
| | Bawana | 1372 | 1372 |
| | TOWMCL | 16 | 16 |
| | Total | 2936 | 2936 |
| 2 | Maximum Unrestricted Demand (MW) | 3882 | 3946 |
| | Date | 01.02.2017 | 09.02.2018 |
| | Time | 10.15.52 | 10.09.27 |
| 3 | Peak Demand met (MW) | 3882 | 3946 |
| | Date | 01.02.2017 | 09.02.2018 |
| | Time | 10.15.52 | 10.09.27 |
| 4 | Peak Availability (MW) | 3722 | 3835 |
| 5 | Shortage (-) / Surplus (+) in MW | (-) 160 | (-) 111 |
| 6 | Percentage Shortage (-) / Surplus (+) | (-) 4.12 | (-) 2.81 |
| 7 | Maximum Energy Consume in a day (Mus) | 68.602 | 66.571 |
| 8 | Energy Consumed during the month | 1706.711 | 1753.210 |
| 9 | Load Shedding in Mus | | |
| A) | Due to Grid Restrictions | | |
| i) | Under Frequency Relay Operations | 0.049 | 0.000 |
| ii) | Manual Load shedding from DTL S/Stns. | 0.000 | 0.000 |
| iii) | Load Shedding due to low frequency / Low Voltage / TTC/ATC Violation | | |
| | NDPL | 0.000 | 0.000 |
| | BRPL | 0.041 | 0.000 |
| | BYPL | 0.000 | 0.000 |
| | NDMC | 0.000 | 0.000 |
| | MES | 0.000 | 0.000 |
| iv) | Due to transmission Constraints in Central Sector | 0.000 | 0.000 |
| | Total due to Grid Restriction | 0.090 | 0.0000 |
| B) | Due to Constraints in System in Mus | | |
| | DTL | 0.192 | 0.877 |
| | NDPL | 0.091 | 0.044 |
| | BRPL | 0.286 | 0.310 |
| | BYPL | 0.027 | 0.035 |
| | NDMC | 0.032 | 0.000 |
| | MES | 0.000 | 0.000 |
| | Other Agencies | 0.019 | 0.000 |
| | Total | 0.647 | 1.266 |
| 11 | Grand Total in Mus | 0.737 | 1.266 |

2. PERFORMANCE OF GENERATING STATIONS WITHIN DELHI DURING FEBRUARY 2018

A) For the month of February 2018

All Figures in MUs

| S. No | Stations | Gross Generation | Aux. Consumption | Net Generation | Availability (%) | Backing Down |
|-------|--------------|------------------|------------------|----------------|------------------|--------------|
| 1. | RPH | 0.000 | 0.194 | -0.194 | 0.00 | 0.00 |
| 2. | GT | 31.476 | 1.265 | 30.211 | 90.71 | 128.642 |
| 3. | PPCL | 183.184 | 4.092 | 179.092 | 102.20 | 33.352 |
| 4. | BTPS | 0.000 | 1.367 | -1.367 | 0.00 | 0.00 |
| 5. | Rithala | 0.000 | 0.056 | -0.056 | 89.17 | 55.104 |
| 6. | Bawana | 203.693 | 8.404 | 195.289 | 83.79 | 552.402 |
| 7. | Towmcl | 13.090 | 1.811 | 11.279 | -- | -- |
| 8. | EDWPCL | 1.402 | 0.702 | 0.700 | -- | -- |
| 9. | DMSWL | 8.679 | 1.786 | 6.893 | -- | -- |
| | TOTAL | 441.524 | 19.677 | 421.847 | -- | 769.5 |

B) For the Year 2017-18 (Upto February 2018)

| Power Station | Effective Capacity (MW) | Net Generation in MUs for Feb. 2018 | Availability (%) for Feb. 2018 | PLF (%) for Feb. 2018 | Cumulative Generation in MUs upto Feb. 2018 for the year 2017-18 | Cumulative Availability in % upto Feb. 2018 for the year 2017-18 | Cumulative PLF in % upto Feb. 2018 for the year 2017-18 |
|---------------|-------------------------|-------------------------------------|--------------------------------|-----------------------|--|--|---|
| RPH | 135 | -0.194 | 0.00 | 0.00 | -2.530 | 0.00 | 0.00 |
| GT | 270 | 30.211 | 90.71 | 17.11 | 515.724 | 82.75 | 24.45 |
| PPCL | 330 | 179.092 | 102.20 | 83.16 | 1817.257 | 96.98 | 70.62 |
| BTPS | 705 | -1.367 | 0.00 | 0.00 | 1222.112 | 35.13 | 28.06 |
| Rithala | 108 | -0.056 | 89.17 | 0.00 | -0.668 | 87.32 | 0.00 |
| Bawana | 1372 | 195.289 | 83.79 | 21.88 | 2607.041 | 78.91 | 24.77 |
| Towmcl | 16 | 11.279 | -- | -- | 126.394 | -- | -- |
| EDWPCL | -- | 0.700 | -- | -- | 10.373 | -- | -- |
| DMSWL | -- | 6.893 | -- | -- | 83.841 | -- | -- |
| TOTAL | 2936 | 421.847 | -- | -- | 6379.544 | -- | -- |

3 DETAILS OF OUTAGES OF GENERATING STNS. WITHIN DELHI W.E.F. APRIL 2017

RPH

| Unit No | Capacity in MW | Outage | | Synchronization | | Reason of Outage |
|---------|----------------|----------|-------|-----------------|------|--|
| | | Date | Time | Date | Time | |
| 1 | 67.5 | 08.05.15 | 13.40 | Contd. | | Not in operation due to not meeting pollution norms. |

| Unit No | Capacity in MW | Outage | | Synchronization | | Reason of Outage |
|---------|----------------|----------|-------|-----------------|------|--|
| | | Date | Time | Date | Time | |
| 2 | 67.5 | 21.05.15 | 10.20 | Contd. | | Not in operation due to not meeting pollution norms. |

(B) Gas Turbine

| Unit No | Capacity in MW | Outage | | Synchronization | | Reason of Outage |
|---------|----------------|----------|-------|---|-------|--|
| | | Date | Time | Date | Time | |
| 1 | 30 | 30.4.17 | 07:00 | 30.4.17 | 19:15 | Machine stopped to attend Lealakge of Cooling water from CW return line. |
| | | 30.4.17 | 19:15 | 2.5.17 | 12:02 | After attending the cooling water leakage machine could not be taken on bar due no schedule from SLDC on CC NG. |
| | | 2.5.17 | 23:35 | 24.5.17 | 06:57 | Machine stopped due to no schedule from SLDC on CC NG |
| | | 4.6.17 | 15:47 | 4.6.17 | 17:16 | machine tripped with following alarm GAC Electrical protection Trouable , Electrical Trouable Normal shut down and Genarator Exciatation field failure alarm. Processor of DVR found faulty and same was replaced |
| | | 7.6.17 | 09:45 | 14.6.17 | 12:51 | Machine could not be taken on bar due to no schedule from SLDC on CC NG |
| | | 20.6.17 | 17:26 | 20.6.17 | 23:59 | Machine tripped on Electrical Trouble Normal shut down and generator electrical protection. The following alarm also appeared on protection panel. Relay P141B operated, Rotor or stator earth fault and 11 KV Bkr gas pressure low. |
| | | 23.6.17 | 23:02 | 24.6.17 | 14:05 | Machine Stopped due to Low SF-6 Gas Pressure in 11 KV Breaker. |
| | | 24.6.17 | 14:40 | 26.6.17 | 19:40 | Machine could not be taken on bar due to no schedule from SLDC on CC NG |
| | | 2.7.17 | 09:47 | 3.7.17 | 17:14 | Stopped due to low demand and high frequency |
| | | 13.7.17 | 18:16 | 18.7.17 | 20:22 | |
| | | 22.7.17 | 12:16 | 11.8.17 | 15:37 | Machine stopped due to fire observed in load gear box. |
| | | 11.8.17 | 18:24 | 11.8.17 | 21:25 | |
| | | 12.8.17 | 00:05 | 7.9.17 | 12:00 | Stopped due to low demand and high frequency. |
| | | 18.9.17 | 07:55 | 18.9.17 | 18:11 | |
| | | 22.9.17 | 11:50 | 22.9.17 | 14:30 | Machine tripped on TAD High(155 mm WC) |
| | | 22.9.17 | 14:30 | 23.9.17 | 08:15 | Stopped due to low demand and high frequency |
| | | 23.9.17 | 08:15 | 23.9.17 | 12:15 | Machine not available due to problem in NRV of ACW line. |
| | | 23.9.17 | 12:15 | 28.9.17 | 14:58 | Stopped due to low demand and high frequency |
| | | 4.10.17 | 14:17 | 4.10.17 | 16:45 | Machine tripped on LTTH high. There was a problem in cooling water circuit as the LTTH of other machines were also running High.The self cleaning filter of ACW system cleaned circulating water sytem got normalized. |
| | | 4.10.17 | 16:45 | 6.10.17 | 10:15 | Stopped due to low demand and high frequency. |
| | | 7.10.17 | 12:32 | 8.10.17 | 12:12 | |
| | | 10.10.17 | 06:10 | 10.10.17 | 09:30 | |
| | | 10.10.17 | 16:00 | 12.10.17 | 08:42 | |
| | | 15.10.17 | 00:03 | 17.10.17 | 09:02 | |
| | | 18.10.17 | 15:15 | 28.10.17 | 09:47 | |
| | | 30.10.17 | 05:00 | 30.10.17 | 08:00 | Machine stopped on TAD High the machine could not sustain on 5 MW. |
| | | 30.10.17 | 08:00 | 4.11.17 | 10:25 | Stopped due to low demand and high frequency.. |
| | | 18.11.17 | 20:05 | 2.12.17 | 11:00 | Machine stopped to changeover to GT-5 and also intimated to SLDC |
| | | 2.12.17 | 11:06 | 2.12.17 | 13:25 | Machine again started on trial run after clearance from Mech. Mtc. |
| | | 2.12.17 | 13:34 | 1.1.18 | 12:40 | Stopped due to low demand and high frequency. |
| | | 1.1.18 | 12:44 | 5.1.18 | 10:43 | |
| | | 8.1.18 | 19:32 | 17.1.18 | 10:05 | |
| | | 22.1.18 | 15:01 | 25.1.18 | 06:58 | |
| 25.1.18 | 22:30 | 29.1.18 | 06:40 | | | |
| 30.1.18 | 15:46 | 02.02.18 | 06:50 | | | |
| 3.2.18 | 00:57 | 12.2.18 | 07:23 | | | |
| 14.2.18 | 08:50 | 14.2.18 | 09:10 | | | |
| 14.2.18 | 15:10 | 14.2.18 | 16:17 | As per request from SLDC machine put on FSNL to change the 160 MVA Tr-II by 160 Mva Tr-I. | | |
| 15.2.18 | 11:56 | 28.2.18 | 23:59 | Stopped due to low demand and high frequency. | | |

| Unit No | Capacity in MW | Outage | | Synchronization | | Reason of Outage |
|---------|----------------|----------|-------|-----------------|-------|--|
| | | Date | Time | Date | Time | |
| 2 | 30 | 4.4.17 | 00:04 | 20.4.17 | 16:50 | Machine stopped due to low demand on CCNG from SLDC |
| | | 30.4.17 | 07:00 | 30.4.17 | 19:15 | Machine stopped to attend Lealakge of Cooling water from CW return line. |
| | | 30.4.17 | 19:15 | 24.5.17 | 10:20 | After attending the cooling water leakage machine could not be taken on bar due no schedule from SLDC. |
| | | 29.5.17 | 06:12 | 29.5.17 | 09:45 | Machine tripped while rebooting the Mark-IV system as the machine was operating while R&S controller was inoperative. |
| | | 29.5.17 | 09:45 | 02.06.17 | 09:15 | Machine cleared from C&I side but SLDC did not allow to un the machine due to low demand in the Grid. |
| | | 2.6.17 | 09:15 | 2.6.17 | 20:13 | machine could not be taken on bar as mark-IV system was found hanged. Card "HCMA" in <C> communicator and "HXPD" in <R> Controller was found faulty. These cards were replaced. After executing start command Machine came in temperature control mode and speed of machine did not increase after 2850 RPM. |
| | | 7.6.17 | 09:45 | 13.6.17 | 14:12 | Machine could not be taken on bar due to no schedule from SLDC on CC NG |
| | | 13.6.17 | 14:26 | 14.6.17 | 12:27 | Machine taken on bar for testing. |
| | | 2.7.17 | 09:47 | 3.7.17 | 17:52 | Stopped due to low demand and high frequency |
| | | 8.7.17 | 15:25 | 9.7.17 | 16:34 | Tripped on loss of field on alarm Electrical trouble shutdown. |
| | | 10.7.17 | 10:26 | 10.7.17 | 16:45 | Tripped on loss of field on alarm Electrical trouble shutdown. |
| | | 11.7.17 | 09:57 | 11.7.17 | 17:04 | Machine tripped on Electrical Trouble Normal Shut Down and loss of field alarm on protection panel. |
| | | 11.7.17 | 17:10 | 13.7.17 | 10:43 | Stopped due to low demand and high frequency |
| | | 13.7.17 | 12:35 | 14.7.17 | 13:50 | Machine tripped on Electrical Trouble Normal Shut Down and loss of field alarm on protection panel. |
| | | 14.7.17 | 13:55 | 18.7.17 | 18:29 | Stopped due to low demand and high frequency |
| | | 18.7.17 | 20:45 | 20.7.17 | 17:50 | |
| | | 22.7.17 | 18:59 | 10.8.17 | 15:38 | |
| | | 12.8.17 | 00:07 | 7.9.17 | 14:38 | |
| | | 18.9.17 | 07:50 | 18.9.17 | 17:46 | Machine stpped to attend NRV in return line ACW line. |
| | | 23.9.17 | 08:15 | 23.9.17 | 12:15 | |
| | | 23.9.17 | 12:15 | 25.9.17 | 12:49 | |
| | | 25.9.17 | 16:10 | 28.9.17 | 14:38 | |
| | | 4.10.17 | 15:45 | 6.10.17 | 09:52 | Stopped due to low demand and high frequency |
| | | 7.10.17 | 12:32 | 7.10.17 | 14:24 | |
| | | 1.11.17 | 13:32 | 8.11.17 | 10:00 | |
| | | 18.11.17 | 19:58 | 9.12.17 | 19:33 | Machine stopped to changeover to GT-6 and also intimated to SLDC |
| | | 1.12.17 | 00:00 | 9.12.17 | 19:33 | Stopped due to low demand and high frequency. |
| | | 9.12.17 | 23:59 | 10.12.17 | 11:40 | |
| | | 10.12.17 | 14:30 | 30.12.17 | 11:50 | |
| | | 30.12.17 | 11:55 | 5.1.18 | 09:58 | |
| | | 8.1.18 | 19:32 | 22.1.18 | 13:56 | Machine came on FSNL due to grid disturbance. |
| | | 4.2.18 | 08:26 | 4.2.18 | 08:40 | |
| 14.2.18 | 08:50 | 14.2.18 | 11:40 | | | |
| 14.2.18 | 15:10 | 14.2.18 | 15:15 | | | |
| 14.2.18 | 15:10 | 14.2.18 | 15:15 | | | |
| 15.2.18 | 12:46 | 28.2.18 | 23:59 | | | |

| Unit No | Capacity in MW | Outage | | Synchronization | | Reason of Outage |
|---------|----------------|----------|-------|--|-------|---|
| | | Date | Time | Date | Time | |
| 3 | 30 | 4.4.17 | 23:58 | 30.4.17 | 07:00 | Machine stopped due to low demand on CC Spot R-LNG from SLDC |
| | | 30.4.17 | 07:00 | 30.4.17 | 19:15 | machine was not available due to non availability of cooling water as there was leakage from CW return line for which plant shut down was taken. |
| | | 30.4.17 | 19:15 | 29.7.17 | 14:53 | Machine could not taken on load due to no schedule from SLDC on CC Spot R-LNG |
| | | 29.7.17 | 15:04 | 04.8.17 | 17:10 | Machine stopped after taking trial test as there was no schedule from SLDC. |
| | | 4.8.17 | 22:32 | 5.8.17 | 16:42 | Stopped due to low demand and high frequency |
| | | 6.8.17 | 02:15 | 7.9.17 | 11:32 | |
| | | 7.9.17 | 15:35 | 14.9.17 | 05:36 | |
| | | 16.9.17 | 13:22 | 19.9.17 | 11:17 | |
| | | 21.9.17 | 14:08 | 21.9.17 | 16:27 | Machine tripped, No alarm appeared but fuel failure alarm came on protection pannel. The Cooling water for Turbine oil cleaning was very dirty and this water was drained after that fresh DM water taken into tank and Machine synchronised. |
| | | 22.9.17 | 12:30 | 22.9.17 | 14:30 | Machine tripped on TAD High |
| | | 22.9.17 | 14:30 | 23.9.17 | 08:15 | Stopped due to low demand and high frequency |
| | | 23.9.17 | 08:15 | 23.9.17 | 12:11 | Machine not available due to problem in NRV of ACW line. |
| | | 28.9.17 | 01:00 | 29.9.17 | 08:26 | Stopped due to low demand and high frequency |
| | | 29.9.17 | 09:04 | 4.10.17 | 09:50 | Machine stopped as GT-5 was taken on load as per SLDC requirement of load. |
| | | 7.10.17 | 01:00 | 8.10.17 | 08:20 | Stopped due to low demand and high frequency |
| | | 8.10.17 | 16:30 | 9.10.17 | 12:30 | |
| | | 9.10.17 | 20:00 | 14.10.17 | 12:25 | |
| | | 15.10.17 | 00:06 | 17.10.17 | 09:40 | |
| | | 17.10.17 | 19:01 | 1.11.17 | 05:10 | Machine stopped as per SLDC message due to low demand on CCNG. |
| | | 1.11.17 | 13:35 | 8.11.17 | 10:06 | |
| | | 9.11.17 | 00:22 | 9.11.17 | 09:00 | Machine tripped on high TAD . |
| | | 9.11.17 | 09:00 | 9.12.17 | 20:31 | Machine cleared from Maintenance side but not taken on load due to low schedule on CCNG. |
| | | 9.12.17 | 23:50 | 16.12.17 | 11:46 | Stopped due to low demand and high frequency.. |
| | | 22.12.17 | 11:40 | 22.12.17 | 12:22 | Machine tripped on high LTTH. |
| | | 13.1.18 | 14:30 | 13.1.18 | 16:56 | Machine tripped on manual trip alarm. |
| | | 15.1.18 | 14:56 | 15.1.18 | 18:04 | The machine stopped to change inlet air filter as TAD is High |
| 17.1.18 | 08:15 | 17.1.18 | 12:30 | Machine tripped on high TAD due to sudden heavy fog. | | |
| 17.1.18 | 12:32 | 25.1.18 | 07:42 | Stopped due to low demand and high frequency.. | | |
| 25.1.18 | 22:49 | 28.02.18 | 23:59 | | | |

| Unit No | Capacity in MW | Outage | | Synchronization | | Reason of Outage |
|---------|----------------|----------|-------|-----------------|-------|--|
| | | Date | Time | Date | Time | |
| 4 | 30 | 4.4.17 | 23:58 | 30.4.17 | 07:00 | Machine stopped due to low demand on CC Spot R-LNG from SLDC |
| | | 30.4.17 | 07:00 | 30.4.17 | 19:15 | machine not available due to non availability of cooling water as there was leakage from CW return line for which plant shut down was taken. |
| | | 30.4.17 | 19:15 | 02.06.17 | 12:25 | Machine stopped due to no schedule from SLDC on CC Spot R-LNG |
| | | 2.6.17 | 12:30 | 5.6.17 | 13:30 | Stopped due to low demand and high frequency |
| | | 5.6.17 | 13:30 | 5.6.17 | 15:50 | After giving start command to machine it came on FSNL in due time. While trying to synchronise its 11 KV breaker not taking Close command inspite all permissive healthy. After checking DVR and Mark-Vie system it was found that closing permissive from protection panel was not available. The problem rectified by Protection department and same was synchronised with Grid. |
| | | 6.6.17 | 22:13 | 14.9.17 | 09:28 | Machine stopped due to low schedule from SLDC on CC Spot |
| | | 17.9.17 | 15:30 | 19.9.17 | 12:43 | With heavy jerk in the system and inspecting at local its Y Phase Bus Conductor got snapped and oil is coming from the Bushes of R&Y Phase. |
| | | 20.9.17 | 00:05 | 23.9.17 | 08:15 | Machine stopped as per SLDC message due to low demand on CCspot. |
| | | 23.9.17 | 08:15 | 23.9.17 | 12:15 | Machine not available due to problem in NRV of ACW line. |
| | | 23.9.17 | 12:15 | 25.9.17 | 15:38 | Stopped due to low demand and high frequency |
| | | 27.9.17 | 17:31 | 27.9.17 | 19:40 | Machine tripped on Electrical Trouble Normal Shut down. |
| | | 27.9.17 | 19:45 | 13.10.17 | 11:20 | Stopped due to low demand and high frequency |
| | | 4.10.17 | 22:48 | 5.10.17 | 01:28 | Machine tripped due to communication failed with any IO pack. Loss of flame Tripp alarm appeared. |
| | | 5.10.17 | 01:40 | 5.10.17 | 10:48 | Stopped due to low demand and high frequency |
| | | 7.10.17 | 01:00 | 8.10.17 | 12:00 | |
| | | 8.10.17 | 12:00 | 8.10.17 | 18:30 | Machine taken out from DC due to problem in Field breaker. |
| | | 8.10.17 | 18:35 | 9.10.17 | 13:18 | Machine cleared from maintenance side but not taken on load due low schedule from SLDC. |
| | | 9.10.17 | 20:00 | 14.10.17 | 12:28 | Stopped due to low demand and high frequency |
| | | 14.10.17 | 17:20 | 17.10.17 | 10:13 | |
| | | 17.10.17 | 11:01 | 17.10.17 | 13:13 | Machine tripped due to communication failed with any IO pack. |
| | | 17.10.17 | 19:01 | 31.10.17 | 23:59 | Stopped due to low demand and high frequency. |
| | | 1.11.17 | 00:00 | 9.11.17 | 02:04 | |
| | | 9.11.17 | 02:23 | 10.12.17 | 16:15 | Machine run on trial for cheking the readiness of machine. |
| | | 10.12.17 | 17:01 | 28.12.17 | 13:00 | |
| | | 28.12.17 | 13:05 | 5.1.18 | 10:22 | Stopped due to low demand and high frequency. |
| | | 6.1.18 | 17:15 | 13.1.18 | 15:20 | Machine stopped as per SLDC message due to low demand on CCspot. |
| | | 13.1.18 | 17:45 | 15.1.18 | 13:42 | Machine started to change filter of GT-3 as TAD was High |
| | | 15.1.18 | 18:40 | 17.1.18 | 08:45 | Stopped due to low demand and high frequency. |
| | | 17.1.18 | 10:25 | 28.02.18 | 23:59 | |

| Unit No | Capacity in MW | Outage | | Synchronization | | Reason of Outage |
|----------|----------------|----------|-------|---|-------|--|
| | | Date | Time | Date | Time | |
| 5 | 30 | 4.4.17 | 00:00 | 25.4.17 | 18:57 | machine taken to Hot Gas Path Inspection & Generator O/h since 25/03/2017 |
| | | 25.4.17 | 19:57 | 30.4.17 | 07:00 | Machine Cleared after synchronizing and running for one hour on 10 MW, 20MW and 30 MW |
| | | 30.4.17 | 07:00 | 30.4.17 | 19:15 | machine was not available due to non availability of cooling water as there was leakage from CW return line for which plant shut down was taken. |
| | | 30.4.17 | 19:15 | 1.5.17 | 07:22 | Machine could not taken on load due to no schedule from SLDC on CC Spot R-LNG |
| | | 16.5.17 | 12:40 | 16.5.17 | 13:46 | Machine tripped on loss of Excitation alongwith Electrical trouable normal shut down alarm on protection panel. |
| | | 24.5.17 | 11:25 | 05.06.17 | 17:50 | Machine stopped due to no schedule from SLDC on CC NG |
| | | 16.6.17 | 03:46 | 13.07.17 | 13:21 | Stopped due to low demand and high frequency |
| | | 13.7.17 | 14:41 | 13.7.17 | 17:15 | Machine tripped on Exhaust over temperature trip alarm. |
| | | 14.7.17 | 18:57 | 15.7.17 | 12:25 | Tripped on electrical normal shutdown.UAT E/F operated, differential trip, dirrerential R, Differential Y and Overall differential operated |
| | | 15.7.17 | 12:51 | 15.7.17 | 16:39 | Machine stopped after taking trial and no schedule from SLDC. |
| | | 15.7.17 | 17:22 | 18.7.17 | 11:08 | Stopped due to low demand and high frequency |
| | | 18.7.17 | 18:50 | 20.7.17 | 11:06 | Machine stopped due to leakage of water from Warren Pump and less load on machine. |
| | | 20.7.17 | 13:37 | 22.7.17 | 18:45 | Machine stopped after taking trial and no schedule from SLDC. |
| | | 28.7.17 | 10:42 | 29.7.17 | 15:25 | Machine tripped on overspeed bolt trip alarm.Over speed bolt trip alarm reset and not taken on bar due to no schedule from SLDC. |
| | | 29.7.17 | 15:34 | 02.08.17 | 11:40 | Machine stopped after taking trial and no schedule from SLDC. |
| | | 5.8.17 | 20:08 | 11.8.17 | 13:45 | Stopped due to low demand and high frequency |
| | | 22.8.17 | 18:00 | 22.8.17 | 21:03 | Machine stopped due to gas pressure low in 11 KV breaker |
| | | 26.8.17 | 12:00 | 26.8.17 | 19:50 | Stopped due to low demand and high frequency. |
| | | 30.8.17 | 18:33 | 30.8.17 | 21:30 | Machine stopped due to SF6 Gas pressure low alarm in 11 KV breakers. |
| | | 30.8.17 | 21:30 | 5.9.17 | 09:30 | Stopped due to low demand and high frequency. |
| | | 7.9.17 | 10:05 | 7.9.17 | 10:54 | Machine desynchronise to change the relay which got damaged and not permitting increase in load. |
| | | 17.9.17 | 15:30 | 17.9.17 | 17:20 | With heavy jerk observed in the system GT#5 tripped. |
| | | 20.9.17 | 18:05 | 23.9.17 | 08:15 | Stopped due to low demand and high frequency.. |
| | | 23.9.17 | 08:15 | 23.9.17 | 13:59 | Machine not available due to problem in NRV of ACW line. |
| | | 25.9.17 | 16:49 | 29.9.17 | 09:00 | Machine Tripped due to lub oil temp high alarm. After that machine not taken on load due to no demand on OC spot. |
| | | 29.9.17 | 21:12 | 29.9.17 | 22:12 | Machine tripped on Exhaust temp v.High |
| | | 29.9.17 | 22:52 | 2.10.17 | 12:30 | Stopped due to low demand and high frequency. |
| | | 2.10.17 | 14:00 | 3.10.17 | 22:48 | Stopped due to low demand and high frequency.. |
| | | 4.10.17 | 02:42 | 4.10.17 | 12:42 | Machine tripped on high exhaust over temperature. |
| | | 4.10.17 | 14:10 | 4.10.17 | 15:15 | Machine tripped on LTTH high. There was a problem in cooling water circuit as the LTTH of other machines were also running High.The self cleaning filter of ACW system cleaned circulating water sytem got normalized. |
| | | 4.10.17 | 15:15 | 5.10.17 | 09:55 | Machine cleared from maintenance side but not taken on load due low schedule from SLDC. |
| | | 12.10.17 | 08:14 | 14.10.17 | 11:24 | Machine tripped due to Exhaust Temp of Very High cleared by maintenance division but not taken on load due to low schedule from SLDC. |
| 14.10.17 | 14:32 | 14.10.17 | 16:27 | Machine tripped on high exhaust temperature. | | |
| 14.10.17 | 17:15 | 17.10.17 | 08:57 | Stopped due to low demand and high frequency. | | |
| 17.10.17 | 23:01 | 3.11.17 | 05:21 | | | |
| 1.11.17 | 14:16 | 2.11.17 | 11:25 | Machine changeover to GT-5 and also intimated to SLDC | | |
| 2.11.17 | 19:35 | 18.11.17 | 16:50 | | | |
| 1.12.17 | 10:15 | 8.12.17 | 12:50 | Stopped due to low demand and high frequency. | | |
| 16.12.17 | 14:46 | 29.1.18 | 06:55 | | | |
| 30.1.18 | 15:50 | 02.02.18 | 07:20 | Machine stopped as per SLDC message due to low demand on CCspot. | | |
| 3.2.18 | 01:03 | 15.2.18 | 11:54 | | | |
| 21.2.18 | 13:41 | 21.2.18 | 13:51 | Machine tripped on heavy jerk in the system.Supply of GT tripped. 160 MVA Tx-1 tripped. GT-5 came on FSNL | | |

| Unit No | Capacity in MW | Outage | | Synchronization | | Reason of Outage |
|---------|----------------|----------|-------|---|-------|--|
| | | Date | Time | Date | Time | |
| 6 | 30 | 23.3.17 | 14:17 | 30.4.17 | 07:00 | Machine stopped due to low schedule from SLDC on CC spot R-LNG. |
| | | 30.4.17 | 07:00 | 30.4.17 | 19:15 | machine was not available due to non availability of cooling water as there was leakage from CW return line for which plant shut down was taken. |
| | | 30.4.17 | 19:15 | 2.5.17 | 12:45 | Machine could not taken on load due to no schedule from SLDC on CC Spot R-LNG |
| | | 2.5.17 | 12:45 | 2.5.17 | 22:25 | After getting schedule from SLDC, Machine could not be taken on load due to early disengaging of Diesel Engine before 65% of Turbine full rpm. |
| | | 7.5.17 | 00:23 | 7.5.17 | 00:47 | Machine taken on FSNL to change over from Bus bar BB-1 to BB-3 |
| | | 22.5.17 | 15:00 | 06.06.17 | 21:21 | Machine stopped due to no schedule from SLDC on CC NG |
| | | 16.6.17 | 03:49 | 13.07.17 | 15:20 | Machine could not be taken on bar due to no schedule from SLDC on CC NG |
| | | 20.7.17 | 20:18 | 22.7.17 | 12:12 | Stopped due to low demand and high frequency |
| | | 27.7.17 | 02:44 | 27.7.17 | 15:35 | (i) Communication failed with IO pack |
| | | 27.7.17 | 15:40 | 28.7.17 | 11:38 | Stopped due to low demand and high frequency |
| | | 2.8.17 | 13:08 | 6.8.17 | 02:06 | Machine stopped as per SLDC message due to low demand on CCNG. |
| | | 10.8.17 | 13:18 | 10.8.17 | 13:29 | Machine came on FSNL due to disturbance in Pragati 220 KV I.P Ext Grid. |
| | | 26.8.17 | 03:13 | 26.8.17 | 22:22 | Stopped due to low demand and high frequency. |
| | | 26.8.17 | 22:53 | 30.8.17 | 17:50 | |
| | | 16.9.17 | 13:18 | 17.9.17 | 17:23 | |
| | | 22.9.17 | 10:08 | 22.9.17 | 18:00 | Machine tripped on TAD High(142 mm WC) |
| | | 22.9.17 | 18:00 | 23.9.17 | 08:15 | Stopped due to low demand and high frequency |
| | | 23.9.17 | 08:15 | 23.9.17 | 12:15 | Machine not available due to problem in NRV of ACW line. |
| | | 23.9.17 | 12:15 | 25.9.17 | 12:55 | Stopped due to low demand and high frequency |
| | | 25.9.17 | 19:02 | 29.9.17 | 08:00 | |
| | | 30.9.17 | 21:00 | 13.10.17 | 22:42 | |
| | | 7.10.17 | 18:00 | 8.10.17 | 13:08 | |
| | | 11.10.17 | 06:10 | 11.10.17 | 10:11 | |
| | | 11.10.17 | 16:00 | 14.10.17 | 11:50 | |
| | | 17.10.17 | 23:01 | 1.11.17 | 05:52 | |
| | | 4.11.17 | 10:30 | 18.11.17 | 19:07 | Machine changeover to GT-6 and also intimated to SLDC |
| | | 8.12.17 | 13:47 | 9.12.17 | 19:01 | Stopped due to low demand and high frequency. |
| | | 10.12.17 | 03:30 | 10.12.17 | 10:07 | |
| | | 11.12.17 | 12:45 | 12.12.17 | 07:02 | |
| | | 14.12.17 | 20:45 | 3.1.18 | 12:35 | |
| 3.1.18 | 12:37 | 25.1.18 | 07:05 | Machine stopped after taking scheduled trial of machine and there is no demand from SLDC. | | |
| 25.1.18 | 22:37 | 29.1.18 | 06:09 | Machine stopped as per SLDC message due to low demand on CCSpot. | | |
| 30.1.18 | 15:52 | 2.2.18 | 07:25 | | | |
| 2.2.18 | 21:00 | 28.2.18 | 23:59 | Machine stopped due to low schedule from SLDC. | | |

| Unit No | Capacity in MW | Outage | | Synchronization | | Reason of Outage |
|-----------|----------------|----------|-------|--|-------|--|
| | | Date | Time | Date | Time | |
| STG -1 | 30 | 30.4.17 | 07:00 | 30.4.17 | 19:15 | Machine stopped to attend Lealakge of Cooling water from CW return line. |
| | | 30.4.17 | 19:15 | 2.5.17 | 15:56 | Machine could not taken on load due to no schedule from SLDC on CC Spot R-LNG |
| | | 2.5.17 | 23:35 | 24.5.17 | 09:40 | Stopped due to low demand and high frequency |
| | | 7.6.17 | 09:45 | 14.6.17 | 16:58 | |
| | | 2.7.17 | 09:47 | 3.7.17 | 17:14 | Stopped due to low demand and high frequency |
| | | 8.7.17 | 15:25 | 8.7.17 | 17:07 | Machine tripped as one of the running machine ,GT#2 tripped on loss of excitation. |
| | | 13.7.17 | 18:16 | 19.7.17 | 07:20 | Stopped due to low demand and high frequency |
| | | 22.7.17 | 18:55 | 11.8.17 | 17:35 | |
| | | 11.8.17 | 18:47 | 11.8.17 | 19:52 | machine tripped on drum level very high alarm due drum level contrnol valve of both circuit of HRSG# 2 not operative. |
| | | 12.8.17 | 00:07 | 16.8.17 | 12:45 | Stopped due to low demand and high frequency. |
| | | 16.8.17 | 12:45 | 28.8.17 | 18:30 | STG-1 taken out of DC due to condenser cleaning |
| | | 28.8.17 | 18:30 | 7.9.17 | 16:14 | Stopped due to low demand and high frequency |
| | | 18.9.17 | 07:10 | 18.9.17 | 22:17 | Machine stopped due to heavy leakage of DM water from NRV of CPH O/L valve of HRSG#2. |
| | | 19.9.17 | 12:30 | 19.9.17 | 13:40 | Machine tripped on high Exhaust steam Pr. High. Though all the parameters were normal all of sudden Exhaust steam pressure became high with in the span of 2-3 seconds. |
| | | 23.9.17 | 08:15 | 23.9.17 | 12:15 | Machine stopped to attend NRV of ACW Return line. |
| | | 23.9.17 | 12:15 | 27.9.17 | 17:05 | Stopped due to low demand and high frequency |
| | | 4.10.17 | 14:17 | 4.10.17 | 16:45 | Machine tripped alongwith tripping of GT#1 . |
| | | 4.10.17 | 16:45 | 6.10.17 | 12:24 | Machine cleared from maintenance side but not taken on load due low schedule from SLDC. |
| | | 7.10.17 | 05:30 | 7.10.17 | 08:16 | Running BFP tripped on De-aerator level very low as this alarm appeared due to burning of control cable near super heater zone area of drum floor. Also Stand by BFP could not be taken as the start permissive not available.Hence Machine tripped manually. |
| | | 7.10.17 | 12:32 | 8.10.17 | 07:00 | Machine stopped to attend flue gas leakages at super heater zone area of boiler floor. |
| | | 8.10.17 | 07:00 | 8.10.17 | 13:34 | Machine cleared from maintenance side but not taken on load due low schedule from SLDC. |
| | | 8.10.17 | 14:26 | 8.10.17 | 15:40 | Machine tripped due to false alarm of turbine overspeed as all the parameter were running normal. |
| | | 25.10.17 | 06:20 | 25.10.17 | 09:09 | Machine tripped on failure of LT supply to Boiler and turbine MCC board due to tripping of 800 KVA Transformer-I.Buchholtz relay of 800 KVA Transformer-I operated. On further inspection it was found that the oil level indicator was showing the level of oil as above normal but in actual it was below low level. |
| | | 28.10.17 | 08:10 | 28.10.17 | 08:32 | Machine tripped on low vacume as MS-13 valve closed suddenly. |
| | | 1.11.17 | 13:32 | 4.11.17 | 12:28 | Machine stopped as per SLDC message due to low demand on CCNG. |
| | | 5.11.17 | 22:57 | 5.11.17 | 23:29 | Machine tripped on CH-1 & CH-II operated |
| | | 8.11.17 | 16:02 | 8.11.17 | 17:45 | Machine tripped due to malfunctioning of speed pick up. |
| | | 18.11.17 | 18:47 | 09.12.17 | 21:51 | Machine stopped due to changeover to STG-III as intimated also to SLDC |
| | | 9.12.17 | 23:59 | 10.12.17 | 13:30 | Stopped due to low demand and high frequency. |
| | | 10.12.17 | 13:55 | 5.1.18 | 12.41 | |
| | | 8.1.18 | 19:32 | 17.1.18 | 13:28 | Machine stopped as per SLDC message due to low demand on CCSpot. |
| | | 24.1.18 | 21:01 | 24.1.18 | 22:24 | Machine tripped on reverse power operated. Class A trip relay operated |
| | | 4.2.18 | 08:26 | 4.2.18 | 11:15 | STG tripped due to grid disturbance |
| 14.2.18 | 08:50 | 14.2.18 | 13:25 | Heavy jerk observed in control room as Both 160 MVA Tr-I & II tripped at 220 KV side. STG#I tripped due to grid disturbance. | | |
| 14.2.18 | 15:10 | 14.2.18 | 15:58 | STG#I tripped while change over of ICT no 2 by No 1 at 220 KV side. | | |
| 14.2.18 | 15:58 | 14.2.18 | 23:08 | Machine tripped as soon as it synchronised with grid and checking in local relay 37G found damaged. | | |
| 15.2.18 | 11:30 | 15.2.18 | 20:00 | Machine stopped due to heavy leakage of water and steam from various locations. | | |
| 15.2.18 | 20:00 | 28.2.18 | 23:59 | Machine cleared from maintenance side but not taken on load due to low schedule from SLDC. | | |

| Unit No | Capacity in MW | Outage | | Synchronization | | Reason of Outage |
|-----------|----------------|----------|-------|--|-------|---|
| | | Date | Time | Date | Time | |
| STG -2 | 30 | 1.4.17 | 11:39 | 1.4.17 | 19:25 | Machine stopped to attend hot spot on R-Phase Line Isolator. |
| | | 4.4.17 | 00:00 | 30.4.17 | 07:00 | Machine stopped due to low demand on CCNG from SLDC |
| | | 30.4.17 | 07:00 | 30.4.17 | 19:15 | machine was not available due to non availability of cooling water as there was leakage from CW return line for which plant shut down was taken. |
| | | 30.4.17 | 19:15 | 05.06.17 | 23:02 | Machine could not taken on load due to no schedule from SLDC on CC Spot R-LNG |
| | | 6.6.17 | 22:13 | 4.8.17 | 20:32 | machine stopped as there was no schedule on CC SPOT. |
| | | 4.8.17 | 20:35 | 4.8.17 | 22:05 | All of sudden load became zero and machine tripped manually. |
| | | 4.8.17 | 22:20 | 5.8.17 | 18:50 | machine stopped as local operator informed about heavy steam leakage from MS-114 Valve. |
| | | 5.8.17 | 20:26 | 10.8.17 | 15:00 | Suddenly machine tripped on multiple alram on BCD. Alram s like ESV closed and both boiler trip. |
| | | 10.8.17 | 15:00 | 26.8.17 | 03:00 | After clearance from C&I machine is available but not taken on load due to low schedule from SLDC. |
| | | 26.8.17 | 03:00 | 26.8.17 | 16:45 | Machine not available due to work in CW Inlet valve of STG#1. |
| | | 26.8.17 | 16:45 | 31.8.17 | 23:59 | Machine is available but no schedule from SLDC on CCNG. |
| | | 14.9.17 | 16:07 | 14.9.17 | 17:34 | machine tripped due to Hot well Level very high. As The running CEP-2A left the load due to choking of suction stainer and stand by CEP-28 was under PTW. |
| | | 17.9.17 | 15:30 | 19.9.17 | 13:09 | machine tripped due to tripping of GT#4 as the machine was running on single GT. |
| | | 21.9.17 | 14:08 | 21.9.17 | 17:42 | machine tripped due to tripping of GT#3 as the machine was running on single GT. |
| | | 22.9.17 | 12:30 | 22.9.17 | 14:30 | machine tripped due to tripping of GT#3 as the machine was running on single GT. |
| | | 22.9.17 | 14:30 | 23.9.17 | 08:15 | Stopped due to low demand and high frequency |
| | | 23.9.17 | 08:15 | 23.9.17 | 14:00 | Machine not available due to problem in NRV of ACW line. |
| | | 28.9.17 | 01:00 | 4.10.17 | 11:45 | Stopped due to low demand and high frequency |
| | | 7.10.17 | 01:00 | 7.10.17 | 18:15 | Machine stopped as per SLDC message due to low demand on CCNG. |
| | | 7.10.17 | 18:15 | 8.10.17 | 07:00 | Machine was taken out from DC to attend leakage of cooling water at ACW inlet line of STG#III. |
| | | 8.10.17 | 07:00 | 8.10.17 | 12:00 | Machine cleared from maintenance side but not taken on load due low schedule from SLDC. |
| | | 8.10.17 | 16:30 | 9.10.17 | 14:48 | Stopped due to low demand and high frequency |
| | | 9.10.17 | 20:00 | 14.10.17 | 15:00 | |
| | | 15.10.17 | 00:06 | 17.10.17 | 11:14 | |
| | | 17.10.17 | 19:01 | 1.11.17 | 07:52 | |
| | | 1.11.17 | 13:35 | 8.11.17 | 11:58 | Machine tripped due to tripping of GT#3 as machine running on single HRSG#3. |
| | | 9.11.17 | 00:22 | 9.11.17 | 09:00 | |
| | | 9.11.17 | 09:00 | 16.12.17 | 13:42 | Stopped due to low demand and high frequency |
| | | 22.12.17 | 11:40 | 22.12.17 | 13:32 | Machine tripped due to tripping of GT#3 as the machine was running on single boiler. |
| | | 13.1.18 | 14:30 | 13.1.18 | 17:42 | Machine tripped due to tripping of GT#3 |
| 17.1.18 | 08:15 | 17.1.18 | 12:30 | Machine tripped as GT#3 tripped on very high TAD. | | |
| 17.1.18 | 12:00 | 25.1.18 | 10:04 | Stopped due to low demand and high frequency | | |
| 25.1.18 | 22:49 | 28.02.18 | 23:59 | Machine stopped as per SLDC message due to low demand on CCSpot. | | |

| Unit No | Capacity in MW | Outage | | Synchronization | | Reason of Outage |
|----------|----------------|----------|-------|---|-------|---|
| | | Date | Time | Date | Time | |
| STG -3 | 30 | 28.3.17 | 18:45 | 24.4.17 | 18:00 | Machine taken for Chemical Cleaning of Condensor |
| | | 24.4.17 | 18:00 | 30.4.17 | 07:00 | Chemical Cleaning of Condensor completed but machine did not taken on load due to no schedule on CC Spot R-Lng from SLDC |
| | | 30.4.17 | 07:00 | 30.4.17 | 19:15 | machine was not available due to non availability of cooling water as there was leakage from CW return line for which plant shut down was taken. |
| | | 30.4.17 | 19:15 | 1.5.15 | 11:22 | Machine could not taken on load due to no schedule from SLDC on CC Spot R-LNG |
| | | 7.5.17 | 08:30 | 7.5.17 | 10:47 | There was hunting in 24 Volt Charger Out put Voltage which leads to tripping of MCB of DDC panel CRB01,CRB02, CRC01,CRC03 & CJJ02. Due to this Operating parameters were not available at BCD as well as on CRT and subsequently machine tripped on Turbine Ch-I & Ch-II. |
| | | 24.5.17 | 11:25 | 01.06.17 | 13:15 | Machine stopped as there was no schedule on CCNG |
| | | 1.6.17 | 13:00 | 5.6.17 | 13:15 | Machine taken under PTW to attend leakage of steam from Main Steam Turbine Control valve. |
| | | 5.6.17 | 13:15 | 5.6.17 | 19:55 | As per SLDC msg Machine taken on Bar. |
| | | 5.6.17 | 20:26 | 5.6.17 | 21:16 | Machine tripped on Turbine RJB Vibration V.High |
| | | 11.6.17 | 12:37 | 11.6.17 | 14:59 | Machine tripped on Turbine channel-1 & 2 operated. |
| | | 15.6.17 | 11:39 | 15.6.17 | 12:52 | Machine tripped on Turbine channel-1 & 2 operated. |
| | | 16.6.17 | 03:49 | 13.07.17 | 17:22 | Machine could not be taken on bar due to no schedule from SLDC on CC NG |
| | | 20.7.17 | 20:18 | 22.7.17 | 14:03 | Stopped due to low demand and high frequency |
| | | 27.7.17 | 02:44 | 27.7.17 | 05:52 | Machine tripped on Very High Drum level as the Drum level of HRSG# 5 could not be controlled . The other HRSG was tripped due to tripping of GT#6. |
| | | 28.7.17 | 10:42 | 28.7.17 | 12:42 | Machine tripped as running Machine GT # 5 tripped on overspeed bolt alarm. |
| | | 28.7.17 | 19:18 | 28.7.17 | 20:06 | Machine Tripped on Drum Level High |
| | | 28.7.17 | 20:54 | 28.7.17 | 22:21 | Machine Tripped on Class A Trip relay operated |
| | | 5.8.17 | 20:08 | 6.8.17 | 04:00 | Stopped due to low demand and high frequency. |
| | | 10.8.17 | 13:18 | 10.8.17 | 14:18 | Machine tripped due to disturbance in Pragati 220 KV I.P Ext Grid. |
| | | 17.8.17 | 23:28 | 18.8.17 | 03:38 | Machine tripped on exhaust pressure very high. Vaccum stars decreasing slowly and machine tripped when the value og vaccum was -0.78 Kg/Cm2. Both high and very high alarm appeared same time. |
| | | 20.8.17 | 07:10 | 20.8.17 | 11:10 | Machine tripped due to Turbine Ch-1 & Ch-2 operated, Diff. expansion V.High and V.high, Turbine Brg. Temp and Generator bearing temp v.high alarm also appeared on BCD pannel. It was found that BK card failed and same was replaced. |
| | | 26.8.17 | 03:11 | 26.8.17 | 21:15 | Machine stopped to attend CW Inlet Valve of STG #I. |
| | | 16.9.17 | 02:18 | 16.9.17 | 13:04 | Machine stopped as the Generator winding tempertaure of Machine became high due to problem in cooling water. |
| | | 17.9.17 | 15:30 | 17.9.17 | 19:51 | Machine tripped as there was disturbance in the yard due to snapping of Y phase bus conductor of GT#4. |
| | | 18.9.17 | 18:49 | 18.9.17 | 19:38 | machine tripped with Turbine Ch-I & II operated. |
| | | 20.9.17 | 17:30 | 20.9.17 | 21:06 | Machine stopped as the Generator winding tempertaure of Machine became high due to problem in cooling water.It is suspected that the seat of NRV of O/L valve in ACW line is in stucked position.. |
| | | 22.9.17 | 10:08 | 22.9.17 | 18:00 | Machine tripped on due to tripping of GT#6 on high TAD as the machine was running on single boiler. |
| | | 22.9.17 | 18:00 | 23.9.17 | 08:15 | Stopped due to low demand and high frequency |
| | | 23.9.17 | 08:15 | 23.9.17 | 12:15 | Machine not available due to problem in NRV of ACW line. |
| | | 23.9.17 | 12:15 | 23.9.17 | 16:13 | Stopped due to low demand and high frequency |
| | | 25.9.17 | 18:10 | 27.9.17 | 23:30 | Machine stopped due to lube oil temp very high (75 to 80 degree C). |
| | | 27.9.17 | 23:30 | 28.9.17 | 23:59 | Stopped due to low demand and high frequency |
| | | 30.9.17 | 21:00 | 4.10.17 | 01:14 | |
| 7.10.17 | 17:30 | 8.10.17 | 09:55 | Machine stopped due to heavy leakage from ACW inlet line of STG# III. | | |
| 10.10.17 | 02:25 | 10.10.17 | 03:40 | Machine tripped on Drum level low. | | |
| 12.10.17 | 08:14 | 14.10.17 | 13:05 | Machine tripped due to tipping of GT#5 as the machine was running on single GT.but not taken on load due to low schedule from SLDC. | | |
| 17.10.17 | 23:01 | 1.11.17 | 08:52 | Stopped due to low demand and high frequency | | |
| 2.11.17 | 19:30 | 2.11.17 | 20:58 | Machine tripped due to hotwell level high | | |

| Unit No | Capacity in MW | Outage | | Synchronization | | Reason of Outage |
|---------|----------------|----------|-------|---|-------|---|
| | | Date | Time | Date | Time | |
| STG-3 | Contd. | 4.11.17 | 07:45 | 18.11.17 | 19:28 | Machine changedover to STG-III as also intimated to SLDC |
| | | 23.11.17 | 08:54 | 23.11.17 | 09:47 | Machine tripped due to tripping of CEP-3B and CEP-3A could not start. Machine thus tripped on low vacuum. |
| | | 11.12.17 | 12:45 | 11.12.17 | 13:55 | Due to problem in Woodward Governor system load on machine could not be increased beyond 2 MW hence machine tripped manually. |
| | | 13.12.17 | 07:40 | 13.12.17 | 08:17 | Machine tripped on Class-A operated. |
| | | 16.12.17 | 14:46 | 25.1.18 | 09:54 | Machine stopped as per demand of SLDC |
| | | 25.1.18 | 22:37 | 29.1.18 | 09:03 | Machine stopped as per SLDC message due to low demand on CCSpot. |
| | | 30.1.18 | 15:52 | 02.02.18 | 09:40 | Machine stopped as per SLDC message due to low demand on CCSpot. |
| | | 3.2.18 | 01:06 | 15.2.18 | 14:20 | Machine stopped due to low schedule from SLDC. |
| | | 21.2.18 | 13:41 | 25.2.18 | 15:17 | STG-III tripped due to tripping of GT-5. Heavy jerk was observed in the system. |
| 26.2.18 | 07:26 | 26.2.18 | 08:26 | STG-III tripped due to CEP-3A Breaker Flash out during changeover from CEP-3B to CEP-3A. 800 KVA TX-II tripped in jerk. | | |

(C) PRAGATI

| Unit No | Capacity in MW | Outage | | Synchronization | | Reason of Outage |
|----------|----------------|----------|-------|----------------------------------|-------|--|
| | | Date | Time | Date | Time | |
| 1 | 104 | 17.02.17 | 12.10 | 01.04.17 | 11.36 | Unit tripped due to internal fault |
| | | 18.04.17 | 15.35 | 20.04.17 | 19.47 | GT#2 swapped by GT#1 and started after getting schedule. |
| | | 27.04.17 | 00.39 | 02.06.17 | 12.36 | Stopped due to low demand and high frequency |
| | | 02.06.17 | 19.34 | 05.06.17 | 14.20 | |
| | | 07.06.17 | 10.34 | 13.06.17 | 15.49 | |
| | | 16.06.17 | 07.27 | 17.06.17 | 09.51 | |
| | | 20.06.17 | 11.08 | 11.07.17 | 17.48 | |
| | | 11.07.17 | 16.17 | 27.07.17 | 11.26 | |
| | | 07.08.17 | 12.03 | 11.08.17 | 12.33 | |
| | | 14.08.17 | 07.37 | 14.08.17 | 12.12 | Unit tripped due to internal fault |
| | | 15.08.17 | 16.46 | 15.08.17 | 21.30 | |
| | | 15.08.17 | 21.30 | 16.08.17 | 11.03 | Gt#1 remain stopped due to no schedule and started after getting schedule. |
| | | 22.08.17 | 11.24 | 22.08.17 | 12.09 | Unit tripped due to internal fault |
| | | 24.09.17 | 20.20 | 25.09.17 | 11.00 | Unit stopped to attend hot spot |
| | | 25.09.17 | 11.00 | 25.09.17 | 12.44 | Stopped due to low demand and high frequency |
| | | 26.11.17 | 01.34 | 26.11.17 | 05.40 | Unit tripped due to grid disturbance |
| | | 31.12.17 | 09.00 | 31.12.17 | 21.30 | Planned mtc. |
| | | 31.12.17 | 21.30 | 01.01.18 | 07.33 | Stopped due to low demand and high frequency |
| | | 13.01.18 | 21.45 | 14.01.18 | 23.30 | Unit Stopped for planned mtc. |
| | | 14.01.18 | 23.30 | 15.01.18 | 05.52 | Stopped due to low demand and high frequency |
| 04.02.18 | 08.30 | 04.02.18 | 13.16 | Unit tripped on grid disturbanec | | |
| 14.02.18 | 08.50 | 14.02.18 | 11.59 | | | |

| Unit No | Capacity in MW | Outage | | Synchronization | | Reason of Outage |
|----------|----------------|----------|-------|--|-------|--|
| | | Date | Time | Date | Time | |
| 2 | 104 | 01.04.17 | 13.14 | 06.04.17 | 09.00 | GT#2 swapped by GT#1 |
| | | 06.04.17 | 09.00 | 06.04.17 | 19.00 | GT#2 was unavailable for Planned Maintenance |
| | | 06.04.17 | 19.00 | 18.04.17 | 14.05 | Stopped due to low demand and high frequency |
| | | 17.06.17 | 09.01 | 17.06.17 | 12.00 | Stopped due to internal fault. |
| | | 17.06.17 | 12.00 | 21.06.17 | 05.40 | Stopped due to low demand and high frequency |
| | | 01.08.17 | 08.58 | 01.08.17 | 11.15 | Tripped due to as pressure low |
| | | 01.08.17 | 13.47 | 01.08.17 | 18.10 | Unit tripped due to internal fault |
| | | 08.08.17 | 07.08 | 08.08.17 | 08.25 | |
| | | 08.09.17 | 12.29 | 08.09.17 | 13.49 | Unit tripped due to grid disturbance |
| | | 23.09.17 | 11.27 | 24.09.17 | 20.56 | Stopped due to low demand and high frequency |
| | | 31.10.17 | 14.00 | 03.11.17 | 22.41 | Stopped for planned inspection. |
| | | 04.11.17 | 06.20 | 04.11.17 | 10.13 | Unit tripped due to internal fault |
| | | 08.11.17 | 08.54 | 08.11.17 | 11.44 | Unit tripped due to internal fault |
| | | 26.11.17 | 01.34 | 26.11.17 | 02.25 | Unit tripped due to grid disturbance |
| | | 12.12.17 | 00.28 | 12.12.17 | 03.45 | Tripped due to grid disturbance |
| | | 12.12.17 | 03.45 | 12.12.17 | 24.00 | Planned mtc. |
| | | 13.12.17 | 00.00 | 13.12.17 | 06.43 | Unit tripped due to grid disturbance |
| | | 15.12.17 | 02.12 | 15.12.17 | 05.14 | Internal fault |
| | | 12.01.18 | 22.12 | 13.01.18 | 20.40 | Unit Stopped for planned mtc. |
| | | 14.02.18 | 08.50 | 14.02.18 | 10.28 | Unit tripped on grid disturbance |
| 14.02.18 | 15.29 | 14.02.18 | 18.31 | Stopped due to low demand and high frequency | | |

| Unit No | Capacity in MW | Outage | | Synchronization | | Reason of Outage |
|----------|----------------|----------|-------|-----------------|-------|---|
| | | Date | Time | Date | Time | |
| STG | 122 | 24.04.17 | 09.33 | 27.04.17 | 10.49 | STG tripped on internal fault. |
| | | 24.05.17 | 10.38 | 24.05.17 | 12.12 | |
| | | 17.06.17 | 09.03 | 17.06.17 | 11.18 | Desynchronized as G.T.-2 tripped on internal fault. |
| | | 20.06.17 | 11.08 | 21.06.17 | 08.45 | Stopped due to low demand and high frequency |
| | | 08.08.17 | 07.08 | 08.08.17 | 09.50 | Unit tripped due to internal fault |
| | | 25.08.17 | 17.23 | 25.08.17 | 18.54 | Unit stopped to attend internal fault |
| | | 08.09.17 | 12.29 | 08.09.17 | 13.55 | Unit tripped due to grid disturbance |
| | | 11.09.17 | 05.26 | 11.09.17 | 09.15 | Unit stopped to attend hot spot |
| | | 14.10.17 | 08.48 | 14.10.17 | 11.02 | Unit tripped due to internal fault |
| | | 15.10.17 | 08.52 | 15.10.17 | 13.18 | |
| | | 16.10.17 | 05.34 | 16.10.17 | 10.14 | |
| | | 01.11.17 | 17.44 | 01.11.17 | 18.25 | Unit tripped due to grid disturbance |
| | | 26.11.17 | 01.19 | 26.11.17 | 11.02 | |
| | | 12.12.17 | 00.28 | 12.12.17 | 03.01 | STG tripped on internal fault |
| | | 01.01.18 | 06.55 | 01.01.18 | 08.13 | |
| | | 13.01.18 | 11.21 | 13.01.18 | 12.04 | |
| | | 14.02.18 | 08.50 | 14.02.18 | 14.32 | Unit tripped due to grid disturbance |
| | | 14.02.18 | 17.49 | 14.02.18 | 18.39 | |
| 21.02.18 | 12.34 | 21.02.18 | 14.55 | | | |

(D) BADARPUR THERMAL POWER STATION

| Unit | Capacity in MW | Outage | | Synchronization | | Reason of Outage |
|------|----------------|----------|-------|-----------------|-------|--|
| | | Date | Time | Date | Time | |
| 1 | 95 | 20.11.14 | 00.00 | 28.02.18 | 23.59 | Not in operation due to not meeting pollution norms. |

| Unit | Capacity in MW | Outage | | Synchronization | | Reason of Outage |
|------|----------------|----------|-------|-----------------|-------|--|
| | | Date | Time | Date | Time | |
| 2 | 95 | 24.09.15 | 19.52 | 28.02.18 | 23.59 | Not in operation due to not meeting pollution norms. |

| Unit | Capacity in MW | Outage | | Synchronization | | Reason of Outage |
|------|----------------|----------|-------|-----------------|-------|--|
| | | Date | Time | Date | Time | |
| 3 | 95 | 09.10.15 | 01.00 | 28.02.18 | 23.59 | Not in operation due to not meeting pollution norms. |

| Unit | Capacity in MW | Outage | | Synchronization | | Reason of Outage |
|----------|----------------|----------|-------|--|-------|--|
| | | Date | Time | Date | Time | |
| 4 | 210 | 04.04.17 | 05.17 | 17.04.17 | 07.13 | Stopped due to low demand and high frequency |
| | | 29.04.17 | 10.37 | 29.04.17 | 12.42 | Generator protection |
| | | 06.05.17 | 18.08 | 06.05.17 | 22.49 | Hot spot on GT Bushing |
| | | 31.05.17 | 14.00 | 05.06.17 | 07.31 | Stopped due to low demand and high frequency |
| | | 23.06.17 | 21.27 | 25.06.17 | 10.45 | Stopped due to water wall leakage BTL. |
| | | 25.06.17 | 10.45 | 26.06.17 | 05.20 | AVR excitation problem. |
| | | 07.07.17 | 18.12 | 08.07.17 | 20.10 | Water wall leakage |
| | | 10.08.17 | 03.17 | 10.08.17 | 06.38 | UTT/ST Problem. |
| | | 05.09.17 | 00.30 | 05.09.17 | 22.15 | Water wall tube leakage |
| | | 12.09.17 | 17.13 | 14.09.17 | 09.55 | Reheater tube leakage |
| | | 19.09.17 | 16.52 | 20.09.17 | 14.57 | Wall wall tube leakage |
| | | 24.09.17 | 09.39 | 27.09.17 | 08.56 | Stopped due to low demand and high frequency |
| 16.10.17 | 23.47 | 28.02.18 | 23.59 | Stopped by DPCC due to not meeting pollution norms Stopped by DPCC | | |

| Unit | Capacity in MW | Outage | | Synchronization | | Reason of Outage |
|------|----------------|----------|-------|-----------------|-------|--|
| | | Date | Time | Date | Time | |
| 5 | 210 | 21.12.16 | 00.00 | 04.04.17 | 01.39 | Stopped due to low demand and high frequency |
| | | 13.05.17 | 14.44 | 14.05.17 | 00.05 | PA Fan 5A motor shaft shared |
| | | 14.05.17 | 00.06 | 14.05.17 | 05.34 | Generation excitation low |
| | | 27.05.17 | 19.15 | 28.05.17 | 11.30 | Stopped due to low demand and high frequency |
| | | 28.05.17 | 11.30 | 29.05.17 | 07.36 | |
| | | 29.06.17 | 19.56 | 03.07.17 | 10.38 | |
| | | 16.10.17 | 23.24 | 28.02.18 | 23.59 | Stopped by DPCC due to not meeting pollution norms Stopped by DPCC |

(E) BAWANA CCGT POWER STATION

| Unit | Capacity in MW | Outage | | Synchronization | | Reason of Outage |
|----------|----------------|----------|-------|--|-------|---|
| | | Date | Time | Date | Time | |
| 1 | 216 | 07.02.17 | 19:20 | 09.05.17 | 15:32 | low or No scheduling of Bawana. (Trial Run) |
| | | 09.05.17 | 16:47 | 10.05.17 | 4:30 | low or No scheduling of Bawana. (Trial Run) |
| | | 10.05.17 | 13:21 | 12.05.17 | 5:40 | Stopped due to low demand and high frequency |
| | | 21.05.17 | 16:48 | 21.05.17 | 18:30 | Black Out (Grid Restore@18:30 hrs.) |
| | | 21.05.17 | 18:30 | 24.05.17 | 10:18 | Stopped due to low demand and high frequency |
| | | 31.05.17 | 20:15 | 16.06.17 | 16:50 | |
| | | 16.06.17 | 00:00 | 16.06.17 | 16:50 | |
| | | 17.06.17 | 19:30 | 17.06.17 | 7:41 | |
| | | 19.06.17 | 17:39 | 19.06.17 | 8:11 | |
| | | 23.06.17 | 19:01 | 23.06.17 | 8:05 | |
| | | 25.06.17 | 12:35 | 25.06.17 | 6:54 | |
| | | 06.08.17 | 12:32 | 06.08.17 | 14:44 | |
| | | 07.08.17 | 12:39 | 07.08.17 | 14:27 | Mixing of 220V AC & 110 DC. |
| | | 19.08.17 | 17:40 | 24.08.17 | 08:23 | low or No scheduling of Bawana . |
| | | 25.09.17 | 11:04 | 07.10.17 | 15:00 | Stopped due to internal fault |
| | | 07.10.17 | 15:00 | 07.10.17 | 21:09 | Stopped due to low demand and high frequency |
| | | 01.11.17 | 03:36 | 01.11.17 | 06:08 | GT#1 unloaded due to malfunction of limit switch of compressor bleed valve which was supposed to be closed. |
| | | 05.11.17 | 13:27 | 05.11.17 | 21:40 | Filter replacement |
| | | 17.11.17 | 04:15 | 19.11.17 | 21:00 | |
| | | 01.12.17 | 14:00 | 01.12.17 | 15:24 | Internal fault |
| | | 17.12.17 | 21:58 | 27.12.17 | 00:00 | Stopped due to low demand and high frequency |
| | | 27.12.17 | 00:00 | 27.12.17 | 12:00 | Stopped due to boroscopic inspection |
| | | 27.12.17 | 12:00 | 05.01.18 | 08:41 | Stopped due to low demand and high frequency |
| | | 06.01.18 | 00:00 | 08.01.18 | 13:40 | |
| | | 25.01.18 | 04:51 | 25.01.18 | 10:28 | Unit stopped due to high DP |
| | | 25.01.18 | 11:04 | 25.01.18 | 12:28 | High viberation |
| 25.01.18 | 12:32 | 30.01.18 | 13:26 | Stopped due to low demand and high frequency | | |
| 11.02.18 | 20:50 | 11.02.18 | 23:02 | Tripped due to internal fault | | |
| 12.02.18 | 16:44 | 28.02.18 | 23:59 | Stopped due to low demand and high frequency | | |

| Unit | Capacity in MW | Outage | | Synchronization | | Reason of Outage |
|------|----------------|----------|-------|-----------------|-------|--|
| | | Date | Time | Date | Time | |
| 2 | 216 | 08.12.16 | 06:35 | 31.05.17 | 16:52 | Stopped due to low demand and high frequency |
| | | 03.06.17 | 12:04 | 05.07.17 | 13:47 | |
| | | 23.07.17 | 13:57 | 24.07.17 | 16:19 | |
| | | 04.08.17 | 11:30 | 04.08.17 | 18:30 | Tripped due to internal fault |
| | | 07.08.17 | 12:41 | 08.08.17 | 10:43 | |
| | | 29.08.17 | 12:00 | 29.08.17 | 23:59 | Stopped due to low demand and high frequency |
| | | 01.09.17 | 00:00 | 14.12.17 | 23:59 | Upgradation and overhauling of generator. |
| | | 15.12.17 | 23:04 | 15.12.17 | 24:00 | Tripped due to loss of flame. |
| | | 15.12.17 | 00:00 | 15.12.17 | 04:05 | |
| | | 04.01.18 | 22:35 | 05.01.18 | 02:42 | Due to stuck up of B phase of Bay 405 while opening, LBB protection operated on Bay 405 leading to tripping of all the 400 KV Breakers on Bus II namely Bay 403, 409, 413 & 419 and 400 KV Bus II became dead. |
| | | 05.01.18 | 12:53 | 05.01.18 | 15:28 | Unit Stopped on internal fault. |
| | | 06.01.18 | 08:27 | 06.01.18 | 11:03 | Due to uncleared fault in 400 KV Bawana – Deepalpur line all the 400 KV Lines emanating from 400 KV CCGT Bawana substation and 400 KV DTL Bawana Substation tripped from remote end along with Generator Transformers of CCGT Bawana leading to complete blackout. |
| | | 04.02.18 | 20:00 | 04.02.18 | 23:22 | Tripped due to internal fault |
| | | 06.02.18 | 21:00 | 12.02.18 | 14:44 | Stopped due to low demand and high frequency |

| Unit | Capacity in MW | Outage | | Synchronization | | Reason of Outage |
|----------|----------------|----------|-------|--|-------|--|
| | | Date | Time | Date | Time | |
| STG-1 | 254 | 07.02.17 | 19:24 | 09.05.17 | 18:00 | Minor Overhauling.(DC introduced w.e.f.18:00 hrs.) |
| | | 09.05.17 | 18:00 | 12.05.17 | 15:19 | Stopped due to low demand and high frequency |
| | | 21.05.17 | 16:48 | 21.05.17 | 18:30 | Black Out (Grid Restore@ 18:30 hrs.) |
| | | 21.05.17 | 18:30 | 24.05.17 | 9:01 | Turbine Roter mtc. |
| | | 24.05.17 | 9:01 | 24.05.17 | 16:13 | Stopped due to low demand and high frequency |
| | | 26.05.17 | 2:35 | 26.05.17 | 3:27 | Due to AVR trouble alarm, Master relay operated and caused Generator Circuit Breaker of STG#1 to open. "Load shed detected" appeared in alarm list. |
| | | 31.05.17 | 5:13 | 31.05.17 | 7:26 | Due to AVR trouble alarm, Master relay operated and caused Generator Circuit Breaker of STG#1 to open. "Load shed detected" appeared in alarm list. Malfunction of one Digital Input card which generates this signal was suspected. |
| | | 31.05.17 | 13:25 | 31.05.17 | 16:30 | Due to AVR trouble alarm, Master relay operated and caused Generator Circuit Breaker of STG#1 to open. "Load shed detected" appeared in alarm list. Malfunctioning of OverVoltage Relay circuit generated this AVR Trouble alarm which caused Master Relay to operate. |
| | | 03.06.17 | 12.04 | 19.06.17 | 14.05 | |
| | | 19.06.17 | 18.55 | 25.06.17 | 12.32 | Stopped due to low demand and high frequency |
| | | 07.08.17 | 00.00 | 07.08.17 | 19.58 | Mixing of 220V AC and 110V DC. |
| | | 25.09.17 | 11.16 | 28.09.17 | 19.30 | Stopped due to internal fault |
| | | 28.09.17 | 19.30 | 07.10.17 | 15.00 | Stopped due to non availability of G.T.-I & II |
| | | 07.10.17 | 15.00 | 08.10.17 | 07.48 | Stopped due to low demand and high frequency |
| | | 01.11.17 | 03.45 | 01.11.17 | 08.08 | Unit tripped manually |
| | | 05.11.17 | 13.33 | 05.11.17 | 23.11 | Filter replacement |
| | | 08.11.17 | 10.46 | 08.11.17 | 12.31 | Tripped dueto AVR trouble |
| | | 17.11.17 | 04.15 | 19.11.17 | 21.00 | Filter replacement |
| | | 01.12.17 | 14.02 | 01.12.17 | 16.22 | Internal fault |
| | | 04.01.18 | 22:41 | 05.01.18 | 04:06 | GT#1 stopped to attend internal fault consequently STG#1 stopped |
| | | 06.01.18 | 08:27 | 06.01.18 | 13:01 | Due to uncleared fault in 400 KV Bawana – Deepalpur line all the 400 KV Lines emanating from 400 KV CCGT Bawana substation and 400 KV DTL Bawana Substation tripped from remote end along with Generator Transformers of CCGT Bawana leading to complete blackout. |
| | | 07.01.19 | 01:01 | 07.01.19 | 07:44 | HPSU Emeagency Off |
| | | 10.01.18 | 17:15 | 10.01.18 | 19:58 | Planned Mtc. |
| | | 18.01.18 | 11:39 | 18.01.18 | 12:34 | Due to high shaft Vibration. |
| | | 28.01.18 | 07:34 | 28.01.18 | 17:12 | STG#1 Tripped Due to earth fault. |
| | | 29.01.18 | 06:08 | 29.01.18 | 15:44 | Tripped due to internal fault. |
| | | 04.02.18 | 20:00 | 04.02.18 | 23:59 | Half STG#1 not available due to non avialblty of GT#2 |
| | | 11.02.18 | 20:50 | 12.02.18 | 00:39 | Unit tripped on internal fault. |
| 23.02.18 | 16:06 | 23.02.18 | 16:52 | Unit tripped on internal fault. | | |
| 25.02.18 | 17:38 | 25.02.18 | 20:34 | Machine tripped on AVR trouble.Field breaker tripped due to overvoltage. | | |
| 26.02.18 | 00:50 | 26.02.18 | 02:42 | Unit tripped on internal fault. | | |
| 28.02.18 | 13:14 | 28.02.18 | 14:53 | Unit tripped on internal fault. | | |

| Unit | Capacity in MW | Outage | | Synchronization | | Reason of Outage |
|----------|----------------|----------|-------|-----------------|-------|--|
| | | Date | Time | Date | Time | |
| 3 | 216 | 15.04.17 | 16.06 | 03.05.17 | 16.55 | Stopped due to low demand and high frequency |
| | | 04.05.17 | 00.12 | 04.05.17 | 02.32 | When lead selection was given to AOP-2, as per logic, AOP-1 stopped. But Pr. Transmitter sensed a dip in the lube oil pressure causing tripping of GT#3. AOP-1 came back in service with a time delay of 4 sec after command from Mark-VI. |
| | | 06.05.17 | 00.15 | 13.06.17 | 17.07 | |
| | | 13.06.17 | 20.30 | 06.09.17 | 11.47 | |
| | | 06.09.17 | 23.16 | 12.09.17 | 08.00 | Stopped due to low demand and high frequency |
| | | 12.09.17 | 08.00 | 04.10.17 | 10.30 | |
| | | 04.10.17 | 10.30 | 13.10.17 | 24.00 | |
| | | 14.10.17 | 10.15 | 15.10.17 | 09.30 | Unit tripped on internal fault. |
| | | 15.10.17 | 09.30 | 17.11.17 | 11.52 | |
| | | 19.11.17 | 20.38 | 21.11.17 | 15.55 | |
| | | 24.11.17 | 21.16 | 09.12.17 | 20.54 | Stopped due to low demand and high frequency |
| | | 10.12.17 | 03.07 | 10.12.17 | 09.38 | |
| 11.12.17 | 13.01 | 28.02.18 | 23.59 | | | |

| Unit | Capacity in MW | Outage | | Synchronization | | Reason of Outage |
|----------|----------------|----------|-------|--|-------|---|
| | | Date | Time | Date | Time | |
| 4 | 216 | 01.04.17 | 11.25 | 24.05.17 | 05.23 | Stopped due to low demand and high frequency |
| | | 24.05.17 | 14.16 | 03.06.17 | 18.26 | |
| | | 06.06.17 | 17.35 | 06.06.17 | 22.06 | Due to Burning of PT circuit wire caused unbalance of voltage in relay thereby resulting in Stator Earth Fault. |
| | | 13.06.17 | 14.42 | 13.06.17 | 19.23 | It was suspected that probably a mixing of AC & DC signals occurred instantaneously in the DDC panel (CRE 43 & 44) which controls the operations of all the Breakers from the remote (ECP/ OWS System), without any process command which resulted in instantaneous Trip command to Breakers. |
| | | 25.06.17 | 13.32 | 19.08.17 | 06.17 | Due to changeover the machine. |
| | | 06.09.17 | 23.59 | 13.09.17 | 09.52 | Stopped due to low demand and high frequency |
| | | 18.09.17 | 15.29 | 18.09.17 | 18.24 | Due to earth rotar fault |
| | | 22.09.17 | 22.04 | 27.09.17 | 08.31 | |
| | | 01.10.17 | 00.00 | 15.10.17 | 24.00 | Stopped due to low demand and high frequency |
| | | 16.10.17 | 00.00 | 29.10.17 | 16.30 | Unit tripped on internal fault. |
| | | 29.10.17 | 16.30 | 01.11.17 | 12.10 | |
| | | 01.11.17 | 19.49 | 08.11.17 | 12.23 | |
| | | 21.11.17 | 16.50 | 09.12.17 | 21.36 | |
| 09.12.17 | 22.32 | 28.02.18 | 23.59 | Stopped due to low demand and high frequency | | |

| Unit | Capacity in MW | Outage | | Synchronization | | Reason of Outage |
|-------|----------------|----------|-------|-----------------|-------|--|
| | | Date | Time | Date | Time | |
| STG-2 | 254 | 03.05.17 | 17.40 | 03.05.17 | 19.05 | While checking the operation of LPBP of HRSG-3 inadvertently the CV got fully opened causing condenser vaccum to drop rapidly and STG-2 tripped on Low Condenser Vaccum |
| | | 12.05.17 | 17.30 | 04.06.17 | 00.14 | Stopped due to low demand and high frequency |
| | | 04.06.17 | 14.38 | 04.06.17 | 17.00 | Malfunction of DVR system apprehended which caused Field Breaker to open. The probable reason which would have caused this problem was the high ambient temperature inside the Thyristor Panel Room. |
| | | 04.06.17 | 18.39 | 04.06.17 | 21.34 | Again Malfunction of DVR system apprehended which caused Field Breaker to open. The probable reason which would have caused this problem was the high ambient temperature inside the Thyristor Panel Room. |
| | | 06.06.17 | 17.35 | 07.06.17 | 01.18 | Burning of PT circuit wire caused unbalance of voltage in relay thereby resulting in Stator Earth Fault. |
| | | 25.06.17 | 13.37 | 19.08.17 | 17.09 | Stopped due to low demand and high frequency |
| | | 28.08.17 | 11.40 | 28.08.17 | 13.09 | Tripped due to internal fault |
| | | 06.09.17 | 20.26 | 28.09.17 | 18.57 | Stopped due to internal fault |
| | | 01.10.17 | 00.05 | 01.10.17 | 02.12 | Tripped on low vaccum. |
| | | 08.10.17 | 00.09 | 28.02.18 | 23.59 | Tripped on internal fault. |

F) RITHALA POWER STATION

| Unit | Capacity in MW | Outage | | Synchronization | | Reason of Outage |
|------|----------------|----------|-------|-----------------|-------|--|
| | | Date | Time | Date | Time | |
| 1 | 31.8 | 19.03.13 | 17:32 | 28.02.18 | 23.59 | Stopped due to low demand and high frequency |

| Unit | Capacity in MW | Outage | | Synchronization | | Reason of Outage |
|------|----------------|----------|-------|-----------------|-------|--|
| | | Date | Time | Date | Time | |
| 2 | 31.8 | 07.06.13 | 22:41 | 28.02.18 | 23.59 | Stopped due to low demand and high frequency |

| Unit | Capacity in MW | Outage | | Synchronization | | Reason of Outage |
|------|----------------|----------|-------|-----------------|-------|--|
| | | Date | Time | Date | Time | |
| STG | 31.8 | 07.06.13 | 22:38 | 28.02.18 | 23.59 | Stopped due to low demand and high frequency |

4 ALLOCATION OF POWER TO DELHI

A) Time block 00.00hrs. to 24.00hrs. @ 0% allocation from Unallocated Quota from 01.04.2017

| Name of the Stn | Installed capacity | Total Un-allocated | Basic Allocation | Basic Allocation at periphery | Allocation out of Unallocated Quota | Allocation out of Un-allocation Quota at Delhi periphery | Total allocation at Delhi periphery |
|--|--------------------|--------------------|------------------|-------------------------------|-------------------------------------|--|-------------------------------------|
| 1 | 2 | 3 | 4 | 5 | 6 | 7 | (8)=(5)+(7) |
| NTPC STATIONS | | | | | | | |
| Singrauli STPS | 2000 | 300 | 150 | 130 | 0 | 0 | 130 |
| Rihand-I | 1000 | 150 | 100 | 87 | 0 | 0 | 87 |
| Rihand Stage -II | 1000 | 150 | 126 | 109 | 0 | 0 | 109 |
| Rihand Stage -III | 1000 | 150 | 132 | 115 | 0 | 0 | 115 |
| ANTA GPS | 419 | 63 | 44 | 41 | 0 | 0 | 41 |
| Auriya GPS | 663.36 | 99 | 72 | 67 | 0 | 0 | 67 |
| Dadri GPS | 829.78 | 129 | 91 | 85 | 0 | 0 | 85 |
| Dadri NCTPS (Th) | 840 | 0 | 756 | 657 | 0 | 0 | 657 |
| Dadri NCTPS (Th) Stage-II | 980 | 147 | 735 | 639 | 0 | 0 | 639 |
| Unchahaar-I TPS | 420 | 20 | 24 | 21 | 0 | 0 | 21 |
| Unchahaar-II TPS | 420 | 63 | 47 | 41 | 0 | 0 | 41 |
| Unchahaar-III TPS | 210 | 31 | 29 | 25 | 0 | 0 | 25 |
| TOTAL | 9782 | 1302 | 2306 | 2016 | 0 | 0 | 2016 |
| NHPC | | | | | | | |
| Baira Suil HPS | 180 | 0 | 20 | 19 | 0 | 0 | 19 |
| Salal HPS | 690 | 0 | 80 | 76 | 0 | 0 | 76 |
| Tanakpur HEP | 94 | 0 | 12 | 11 | 0 | 0 | 11 |
| Chamera HEP | 540 | 0 | 43 | 41 | 0 | 0 | 41 |
| Chamera-II HEP | 300 | 54 | 40 | 38 | 0 | 0 | 38 |
| Chamera-III HEP | 231 | 35 | 29 | 28 | 0 | 0 | 28 |
| URI-I HEP | 480 | 0 | 53 | 50 | 0 | 0 | 50 |
| URI-II HEP | 240 | 0 | 32 | 31 | 0 | 0 | 31 |
| Sewa HEP | 120 | 18 | 16 | 15 | 0 | 0 | 15 |
| Dhaulti Ganga HEP | 280 | 42 | 37 | 35 | 0 | 0 | 35 |
| Dulhasti HEP | 390 | 58 | 50 | 48 | 0 | 0 | 48 |
| Parbati-III HEP | 520 | 66 | 66 | 63 | 0 | 0 | 63 |
| TOTAL | 4065 | 272 | 479 | 455 | 0 | 0 | 455 |
| NPC | | | | | | | |
| Narora APS | 440 | 64 | 47 | 41 | 0 | 0 | 41 |
| RAPP (C) | 440 | 64 | 56 | 49 | 0 | 0 | 49 |
| TOTAL | 880 | 128 | 103 | 89 | 0 | 0 | 89 |
| SJVNL | | | | | | | |
| Nathpa Jhakri HEP | 1500 | 149 | 142 | 135 | 0 | 0 | 135 |
| THDC | | | | | | | |
| Tehri Hydro | 1000 | 99 | 63 | 60 | 0 | 0 | 60 |
| Koteshwar HEP | 400 | 40 | 39 | 37 | 0 | 0 | 37 |
| TOTAL | 1400 | 139 | 102 | 97 | 0 | 0 | 97 |
| Total | 17627 | 1990 | 3132 | 2793 | 0 | 0 | 2793 |
| Allocation from ER and Tala HEP | | | | | | | |
| Farakka | 1600 | 0 | 22 | 19 | 0 | 0 | 19 |
| Kahalgaon | 840 | 0 | 51 | 43 | 0 | 0 | 43 |
| Talchar | 1000 | 0 | 0 | 0 | 0 | 0 | 0 |
| Tala HEP | 1020 | 153 | 30 | 25 | 0 | 0 | 25 |
| Kahalgaon-II | 1500 | 0 | 157 | 131 | 0 | 0 | 131 |
| Total ER | 5960 | 153 | 261 | 217 | 0 | 0 | 217 |
| Joint Venture | | | | | | | |
| Jhajjar TPS | 1500 | 114 | 693 | 622 | 0 | 0 | 622 |
| Ultra Mega Projects | | | | | | | |
| Sasan | 3960 | 0 | 446 | 400 | 0 | 0 | 400 |
| Grand Total | 29047 | 2257 | 4531 | 4032 | 0 | 0 | 4032 |

5 ALLOCATION OF POWER TO DISCOMS

A) ALLOCATION OF POWER TO VARIOUS LICENCEES AS PER ORDER OF DERC AND DECISION OF GNCTD FOR ALLOCATION OF CENTRAL SECTOR STATIONS (DADRI THERMAL & BTPS) AND STATE SECTOR GENERATING STATIONS w.e.f. 06.08.2013.

(Allocation In %)

(A) 10.00hrs. to 17.00hrs.

| SOURCES | LICENSEES | | | | | |
|--------------------------------------|-----------|------|--------|--------|--------|--------|
| | NDMC | MES | NDPL | BRPL | BYPL | TOTAL |
| 1. Central Sector without Dadri (Th) | 0 | 0 | 29.18 | 43.58 | 27.24 | 100.00 |
| 2. Dadri (Th) | 16.63 | 0 | 24.22 | 36.86 | 22.39 | 100.00 |
| 3. BTPS | 17.73 | 7.09 | 21.81 | 33.2 | 20.17 | 100.00 |
| 4. RPH | 0 | 0 | 29.025 | 44.133 | 26.842 | 100.00 |
| 5. GT | 0 | 0 | 29.02 | 44.16 | 26.82 | 100.00 |
| 6. Pragati | 30.3 | 0 | 20.22 | 30.78 | 18.7 | 100.00 |
| 7. DVC | 0 | 0 | 29.18 | 43.58 | 27.24 | 100.00 |
| 8. BAWANA CCGT* | 7.30 | 1.82 | 20.688 | 30.888 | 19.304 | 80.00 |

(B) 00.00hrs. to 10.00hrs. and 17.00hrs. to 24.00hrs.

| SOURCES | LICENSEES | | | | | |
|--------------------------------------|-----------|------|--------|--------|--------|--------|
| | NDMC | MES | NDPL | BRPL | BYPL | TOTAL |
| 1. Central Sector without Dadri (Th) | 0 | 0 | 29.18 | 43.58 | 27.24 | 100.00 |
| 2. Dadri (Th) | 16.53 | 0 | 24.22 | 36.86 | 22.39 | 100.00 |
| 3. BTPS | 17.73 | 7.09 | 21.81 | 33.2 | 20.17 | 100.00 |
| 4. RPH | 0 | 0 | 29.025 | 44.133 | 26.842 | 100.00 |
| 5. GT | 0 | 0 | 29.02 | 44.16 | 26.82 | 100.00 |
| 6. Pragati | 30.3 | 0 | 20.22 | 30.78 | 18.7 | 100.00 |
| 7. DVC | 0 | 0 | 29.18 | 43.58 | 27.24 | 100.00 |
| 8. BAWANA CCGT* | 7.30 | 1.82 | 20.688 | 30.888 | 19.304 | 80.00 |

* 20% POWER OF BAWANA CCGT ALLOCATED TO HARYANA (10%) & PUNJAB (10%)

6 POWER AVAILABILITY-DEMAND POSITION AT THE TIME OF PEAK DEMAND MET DURING FEBRUARY 2018

| Date | Time of peak demand | Generation within Delhi | | | | | | | | | | Import from the Grid | Schedule from the Grid | OD(-) / UD(+) | Demand met | Shedding | Un-Restricted Demand |
|------|---------------------|-------------------------|-----|------|---------|--------|--------|------------|--------|------|-----------------|----------------------|------------------------|-------------------|------------------|----------|----------------------|
| | | RP H | GT | PPCL | Rithala | Bawana | Towmcl | East Delhi | DMS WL | BTPS | Total | | | | | | |
| (1) | (2) | (3) | (4) | (5) | (6) | (7) | (8) | | | | (9)= (3) to (8) | (10) | (11) | (12)= (11) - (10) | (13)= (11)+ (12) | (14) | (15)= (13)+ (14) |
| 1 | 09.45.24 | 0 | 40 | 276 | 0 | 575 | 8 | -1 | 5 | -4 | 899 | 2854 | 3039 | -185 | 3753 | 0 | 3753 |
| 2 | 09.59.59 | 0 | 143 | 277 | 0 | 594 | 18 | 2 | 6 | -4 | 1036 | 2848 | 2831 | 17 | 3884 | 0 | 3884 |
| 3 | 10.17.09 | 0 | 41 | 265 | 0 | 513 | 12 | 2 | 4 | -4 | 833 | 2950 | 2768 | 182 | 3783 | 0 | 3783 |
| 4 | 10.21.59 | 0 | 31 | 165 | 0 | 486 | 12 | -2 | 6 | -4 | 694 | 3058 | 3046 | 12 | 3752 | 0 | 3752 |
| 5 | 10.00.00 | 0 | 41 | 264 | 0 | 451 | 15 | -1 | 3 | -4 | 769 | 2949 | 3022 | -73 | 3718 | 0 | 3718 |
| 6 | 10.00.00 | 0 | 41 | 270 | 0 | 449 | 17 | -1 | 14 | -4 | 786 | 2956 | 2979 | -23 | 3742 | 0 | 3742 |
| 7 | 10.29.00 | 0 | 39 | 262 | 0 | 250 | 15 | -2 | 8 | -4 | 568 | 3249 | 3205 | 44 | 3817 | 0 | 3817 |
| 8 | 09.58.53 | 0 | 40 | 286 | 0 | 251 | 14 | -1 | 15 | -4 | 601 | 3123 | 3229 | -106 | 3724 | 0 | 3724 |
| 9 | 10.09.27 | 0 | 40 | 268 | 0 | 253 | 15 | -1 | 9 | -4 | 580 | 3366 | 3255 | 111 | 3946 | 0 | 3946 |
| 10 | 10.22.00 | 0 | 39 | 274 | 0 | 228 | 19 | -1 | 8 | -4 | 563 | 3163 | 3043 | 120 | 3726 | 0 | 3726 |
| 11 | 10.47.40 | 0 | 38 | 267 | 0 | 254 | 17 | 0 | 8 | -4 | 580 | 3127 | 3013 | 114 | 3707 | 0 | 3707 |
| 12 | 09.46.54 | 0 | 75 | 271 | 0 | 251 | 18 | 0 | 13 | -4 | 624 | 3112 | 3150 | -38 | 3736 | 0 | 3736 |
| 13 | 10.01.00 | 0 | 76 | 274 | 0 | 253 | 15 | -1 | 12 | -4 | 625 | 3201 | 3194 | 7 | 3826 | 0 | 3826 |
| 14 | 09.50.00 | 0 | 17 | -5 | 0 | 324 | 15 | 0 | 10 | -4 | 357 | 3587 | 3185 | 402 | 3944 | 0 | 3944 |
| 15 | 09.59.24 | 0 | 76 | 274 | 0 | 249 | 13 | -1 | 14 | -4 | 621 | 3087 | 3048 | 39 | 3708 | 1 | 3709 |
| 16 | 10.31.25 | 0 | 34 | 273 | 0 | 252 | 14 | -1 | 15 | -4 | 583 | 3243 | 3216 | 27 | 3826 | 0 | 3826 |
| 17 | 09.51.56 | 0 | 28 | 267 | 0 | 253 | 18 | -1 | 11 | -4 | 572 | 2997 | 3033 | -36 | 3569 | 5 | 3574 |
| 18 | 10.23.51 | 0 | 28 | 265 | 0 | 251 | 18 | 0 | 13 | -4 | 571 | 3020 | 3077 | -57 | 3591 | 0 | 3591 |
| 19 | 10.02.46 | 0 | 28 | 317 | 0 | 252 | 17 | 0 | 10 | -4 | 620 | 2929 | 2997 | -68 | 3549 | 0 | 3549 |
| 20 | 10.12.52 | 0 | 28 | 274 | 0 | 249 | 18 | 1 | 12 | -4 | 578 | 3012 | 3020 | -8 | 3590 | 0 | 3590 |
| 21 | 09.54.32 | 0 | 41 | 323 | 0 | 319 | 13 | 4 | 11 | -4 | 707 | 2837 | 2890 | -53 | 3544 | 0 | 3544 |
| 22 | 10.16.07 | 0 | 30 | 266 | 0 | 254 | 16 | 5 | 9 | -4 | 576 | 2919 | 2816 | 103 | 3495 | 0 | 3495 |
| 23 | 10.32.34 | 0 | 30 | 268 | 0 | 255 | 18 | 3 | 14 | -4 | 584 | 3015 | 2826 | 189 | 3599 | 0 | 3599 |
| 24 | 10.10.39 | 0 | 39 | 267 | 0 | 252 | 11 | 5 | 11 | -4 | 581 | 2932 | 2738 | 194 | 3513 | 0 | 3513 |
| 25 | 10.48.27 | 0 | 42 | 263 | 0 | 255 | 16 | 5 | 10 | -3 | 588 | 2779 | 2738 | 41 | 3367 | 0 | 3367 |
| 26 | 10.32.11 | 0 | 41 | 264 | 0 | 251 | 19 | 5 | 13 | -3 | 590 | 2814 | 2881 | -67 | 3404 | 0 | 3404 |
| 27 | 10.30.00 | 0 | 41 | 320 | 0 | 250 | 16 | 6 | 11 | -3 | 641 | 2784 | 2846 | -62 | 3425 | 2 | 3427 |
| 28 | 10.15.10 | 0 | 42 | 260 | 0 | 310 | 16 | 3 | 11 | -3 | 639 | 2939 | 2765 | 174 | 3578 | 0 | 3578 |
| | | | | | | | | | | | | | | | | | |
| | | | | | | | | | | | | | | | | | |
| | | | | | | | | | | | | | | | | | |

POWER AVAILABILITY- DEMAND POSITION AT THE TIME OF MAXIMUM UNRESTRICTED DEMAND DURING FEBURAY 2018

| Date | Time of peak demand | Generation within Delhi | | | | | | | | | | Import from the Grid | Schedule from the Grid | OD(-)/UD(+) | Demand met | Shedding | Un-Restricted Demand |
|------|---------------------|-------------------------|-----|------|----------|--------|--------|------------|--------|------|-----------------|----------------------|------------------------|-------------------|------------------|----------|----------------------|
| | | RP H | GT | PPCL | Rithal a | Bawana | Towmcl | East Delhi | DMS WL | BTPS | Total | | | | | | |
| (1) | (2) | (3) | (4) | (5) | (6) | (7) | (8) | | | | (9)= (3) to (8) | (10) | (11) | (12)= (11) - (10) | (13)= (11)+ (12) | (14) | (15)= (13)+ (14) |
| 1 | 09.45.24 | 0 | 40 | 276 | 0 | 575 | 8 | -1 | 5 | -4 | 899 | 2854 | 3039 | -185 | 3753 | 0 | 3753 |
| 2 | 09.59.59 | 0 | 143 | 277 | 0 | 594 | 18 | 2 | 6 | -4 | 1036 | 2848 | 2831 | 17 | 3884 | 0 | 3884 |
| 3 | 10.17.09 | 0 | 41 | 265 | 0 | 513 | 12 | 2 | 4 | -4 | 833 | 2950 | 2768 | 182 | 3783 | 0 | 3783 |
| 4 | 10.21.59 | 0 | 31 | 165 | 0 | 486 | 12 | -2 | 6 | -4 | 694 | 3058 | 3046 | 12 | 3752 | 0 | 3752 |
| 5 | 10.00.00 | 0 | 41 | 264 | 0 | 451 | 15 | -1 | 3 | -4 | 769 | 2949 | 3022 | -73 | 3718 | 0 | 3718 |
| 6 | 10.00.00 | 0 | 41 | 270 | 0 | 449 | 17 | -1 | 14 | -4 | 786 | 2956 | 2979 | -23 | 3742 | 0 | 3742 |
| 7 | 10.29.00 | 0 | 39 | 262 | 0 | 250 | 15 | -2 | 8 | -4 | 568 | 3249 | 3205 | 44 | 3817 | 0 | 3817 |
| 8 | 09.58.53 | 0 | 40 | 286 | 0 | 251 | 14 | -1 | 15 | -4 | 601 | 3123 | 3229 | -106 | 3724 | 0 | 3724 |
| 9 | 10.09.27 | 0 | 40 | 268 | 0 | 253 | 15 | -1 | 9 | -4 | 580 | 3366 | 3255 | 111 | 3946 | 0 | 3946 |
| 10 | 10.22.00 | 0 | 39 | 274 | 0 | 228 | 19 | -1 | 8 | -4 | 563 | 3163 | 3043 | 120 | 3726 | 0 | 3726 |
| 11 | 10.47.40 | 0 | 38 | 267 | 0 | 254 | 17 | 0 | 8 | -4 | 580 | 3127 | 3013 | 114 | 3707 | 0 | 3707 |
| 12 | 09.46.54 | 0 | 75 | 271 | 0 | 251 | 18 | 0 | 13 | -4 | 624 | 3112 | 3150 | -38 | 3736 | 0 | 3736 |
| 13 | 10.01.00 | 0 | 76 | 274 | 0 | 253 | 15 | -1 | 12 | -4 | 625 | 3201 | 3194 | 7 | 3826 | 0 | 3826 |
| 14 | 09.50.00 | 0 | 17 | -5 | 0 | 324 | 15 | 0 | 10 | -4 | 357 | 3587 | 3185 | 402 | 3944 | 0 | 3944 |
| 15 | 09.59.24 | 0 | 76 | 274 | 0 | 249 | 13 | -1 | 14 | -4 | 621 | 3087 | 3048 | 39 | 3708 | 1 | 3709 |
| 16 | 10.31.25 | 0 | 34 | 273 | 0 | 252 | 14 | -1 | 15 | -4 | 583 | 3243 | 3216 | 27 | 3826 | 0 | 3826 |
| 17 | 09.51.56 | 0 | 28 | 267 | 0 | 253 | 18 | -1 | 11 | -4 | 572 | 2997 | 3033 | -36 | 3569 | 5 | 3574 |
| 18 | 10.23.51 | 0 | 28 | 265 | 0 | 251 | 18 | 0 | 13 | -4 | 571 | 3020 | 3077 | -57 | 3591 | 0 | 3591 |
| 19 | 10.02.46 | 0 | 28 | 317 | 0 | 252 | 17 | 0 | 10 | -4 | 620 | 2929 | 2997 | -68 | 3549 | 0 | 3549 |
| 20 | 10.12.52 | 0 | 28 | 274 | 0 | 249 | 18 | 1 | 12 | -4 | 578 | 3012 | 3020 | -8 | 3590 | 0 | 3590 |
| 21 | 09.54.32 | 0 | 41 | 323 | 0 | 319 | 13 | 4 | 11 | -4 | 707 | 2837 | 2890 | -53 | 3544 | 0 | 3544 |
| 22 | 10.16.07 | 0 | 30 | 266 | 0 | 254 | 16 | 5 | 9 | -4 | 576 | 2919 | 2816 | 103 | 3495 | 0 | 3495 |
| 23 | 10.32.34 | 0 | 30 | 268 | 0 | 255 | 18 | 3 | 14 | -4 | 584 | 3015 | 2826 | 189 | 3599 | 0 | 3599 |
| 24 | 10.10.39 | 0 | 39 | 267 | 0 | 252 | 11 | 5 | 11 | -4 | 581 | 2932 | 2738 | 194 | 3513 | 0 | 3513 |
| 25 | 10.48.27 | 0 | 42 | 263 | 0 | 255 | 16 | 5 | 10 | -3 | 588 | 2779 | 2738 | 41 | 3367 | 0 | 3367 |
| 26 | 10.32.11 | 0 | 41 | 264 | 0 | 251 | 19 | 5 | 13 | -3 | 590 | 2814 | 2881 | -67 | 3404 | 0 | 3404 |
| 27 | 10.30.00 | 0 | 41 | 320 | 0 | 250 | 16 | 6 | 11 | -3 | 641 | 2784 | 2846 | -62 | 3425 | 2 | 3427 |
| 28 | 10.15.10 | 0 | 42 | 260 | 0 | 310 | 16 | 3 | 11 | -3 | 639 | 2939 | 2765 | 174 | 3578 | 0 | 3578 |
| | | | | | | | | | | | | | | | | | |
| | | | | | | | | | | | | | | | | | |
| | | | | | | | | | | | | | | | | | |

SOURCEWISE SCHEDULED DRAWL FROM NORTHERN GRID AS WELL AS AVAILABILITY WITHIN DELHI FOR FEBRUARY 2018

A) AVAILABILITY FROM GENCO AND PRAGATI STNs. (all fig in MUs)

| | |
|---|---------|
| A (i) RPH | 0.000 |
| (ii) GT+STG | 31.476 |
| (iii) PRAGATI | 183.476 |
| (iv) RITHALA | 0.000 |
| (v) BAWANA CCGT | 203.693 |
| (vi) Timarpur – Okhla | 13.090 |
| EDWPCL | 1.402 |
| DMSWL | 8.679 |
| TOTAL | 441.524 |
| B) AVAILABILITY FROM BTPS | -1.722 |
| C) AUXILIARY CONSUMPTION OF GENERATING STNs. EXCLUDING BTPS | 18.310 |
| D) NET GENERATION AVAILABLE WITHIN DELHI(A+B-C) | 421.492 |

B) SOURCE WISE SCHEDULED DRAWL FROM THE NORTHERN GRID

| NAME OF THE STATION | AVAILABILITY AT POWER PLANT | AVAILABILITY AT DELHI PERIPHERY | ALLOCATION MADE BY NRLDC AT POWER PLANT | ALLOCATION MADE BY NRLDC AT DELHI PERIPHERY |
|---------------------|-----------------------------|---------------------------------|---|---|
| B/SUIL | 1.337 | 1.285 | 1.331 | 1.279 |
| SALAL | 6.621 | 6.363 | 6.591 | 6.334 |
| SASAN | 263.054 | 252.577 | 260.360 | 250.005 |
| TANKAPUR | 0.836 | 0.802 | 0.832 | 0.799 |
| CHAMERA | 3.587 | 3.444 | 3.587 | 3.444 |
| CHAMERA -II | 3.693 | 3.547 | 3.673 | 3.528 |
| CHAMERA -III | 2.119 | 2.035 | 2.090 | 2.008 |
| DHAULIGANGA | 3.107 | 2.984 | 3.107 | 2.984 |
| SEWA -2 | 2.981 | 2.872 | 2.981 | 2.872 |
| URI | 5.724 | 5.501 | 5.724 | 5.501 |
| URI-II | 4.892 | 4.700 | 4.891 | 4.700 |
| KOLDAM | 0.000 | 0.000 | 0.000 | 0.000 |
| KOTESHWAR | 7.830 | 7.518 | 7.830 | 7.518 |
| PARBATI3 | 1.178 | 1.131 | 1.178 | 1.131 |
| RAMPUR | 0.000 | 0.000 | 0.000 | 0.000 |
| MUNDRA_UMPP | 0.000 | 0.000 | 0.000 | 0.000 |
| ANTA (GAS) | 0.000 | 0.000 | 0.000 | 0.000 |
| ANTA (RLNG) | 28.229 | 27.106 | 0.000 | 0.000 |
| ANTA (LIQUID) | 0.412 | 0.394 | 0.000 | 0.000 |
| DADRI (GAS) | 14.097 | 13.536 | 3.047 | 2.924 |
| DADRI (RLNG) | 15.853 | 15.221 | 0.000 | 0.000 |
| DADRI (LIQUID) | 31.285 | 30.042 | -0.009 | -0.008 |
| AURAIYA (GAS) | 0.000 | 0.000 | 0.000 | 0.000 |
| AURAIYA (RLNG) | 11.859 | 11.388 | 0.000 | 0.000 |
| AURAIYA (LIQUID) | 35.969 | 34.539 | 0.000 | 0.000 |
| SINGRAULI | 83.750 | 80.411 | 75.080 | 72.104 |
| RIHAND -I | 57.312 | 55.034 | 52.174 | 50.112 |
| RIHAND -II | 79.800 | 76.628 | 72.770 | 69.899 |
| RIHAND -III | 83.518 | 80.198 | 70.236 | 67.453 |
| UNCHAHAAR-I | 14.283 | 13.714 | 11.249 | 10.801 |
| UNCHAHAAR-II | 28.754 | 27.611 | 22.482 | 21.587 |
| UNCHAHAAR-III | 17.414 | 16.721 | 13.595 | 13.054 |
| UNCHAHAAR-IV | 0.000 | 0.000 | 0.000 | 0.000 |
| DADRI (TH) | 463.930 | 445.481 | 311.413 | 299.011 |
| DADRI (TH) STAGE-II | 244.202 | 234.392 | 195.958 | 188.074 |
| NAPP | 29.477 | 28.305 | 29.477 | 28.305 |
| RAPP 'B' | 0.000 | 0.000 | 0.000 | 0.000 |
| RAPP 'C' | 20.492 | 19.654 | 20.492 | 19.654 |
| NATHPA JHAKRI | 15.777 | 15.149 | 11.770 | 11.302 |
| DULASTI | 8.019 | 7.700 | 8.019 | 7.700 |
| TEHRI | 12.805 | 12.293 | 12.805 | 12.293 |
| JHAJJAR | 364.777 | 349.942 | 226.443 | 217.293 |
| KHELGAON | 26.656 | 25.591 | 17.753 | 17.042 |
| KHELGAON-II | 99.297 | 95.351 | 74.350 | 71.396 |

| NAME OF THE STATION | AVAILABILITY AT POWER PLANT | AVAILABILITY AT DELHI PERIPHERY | ALLOCATION MADE BY NRLDC AT POWER PLANT | ALLOCATION MADE BY NRLDC AT DELHI PERIPHERY |
|-------------------------------|-----------------------------|---------------------------------|---|---|
| FARAKA | 13.092 | 12.571 | 8.687 | 8.344 |
| TALA | 0.871 | 0.836 | 0.871 | 0.836 |
| TALCHER | 0.000 | 0.000 | 0.000 | 0.000 |
| DVC | 212.532 | 210.411 | 210.411 | 202.047 |
| CHATTISHGARH | 0.000 | 0.000 | 0.000 | 0.000 |
| TRIPURA | 0.000 | 0.000 | 0.000 | 0.000 |
| MEGHALAYA | 4.196 | 4.155 | 4.155 | 3.991 |
| MAHARASHTRA | 0.000 | 0.000 | 0.000 | 0.000 |
| ANDHRA | 0.654 | 0.649 | 0.649 | 0.624 |
| MADHYA PRADESH | 0.000 | 0.000 | 0.000 | 0.000 |
| METHON POWER(NDPL)LT-06 | 175.330 | 173.579 | 173.579 | 166.713 |
| DVC MEJIA (LT-08)(BYPL) | 58.732 | 58.144 | 58.144 | 55.840 |
| URS | 0.000 | 0.000 | 0.000 | 0.000 |
| JAMMU & KASHMIR | 0.740 | 0.723 | 0.723 | 0.694 |
| HIMACHAL PRADESH | 5.580 | 5.404 | 5.404 | 5.191 |
| ASSAM | 0.000 | 0.000 | 0.000 | 0.000 |
| KARNATAKA | 0.000 | 0.000 | 0.000 | 0.000 |
| NAGALAND | 0.000 | 0.000 | 0.000 | 0.000 |
| DVC LT-9 | 0.000 | 0.000 | 0.000 | 0.000 |
| HARYANA (LT-05) | 49.692 | 48.536 | 48.536 | 46.548 |
| SIKKIM | 5.365 | 5.271 | 5.271 | 5.063 |
| WEST BENGAL | 0.000 | 0.000 | 0.000 | 0.000 |
| UTTAR PRADESH | 2.892 | 2.792 | 2.792 | 2.668 |
| TAMILNADU | 0.000 | 0.000 | 0.000 | 0.000 |
| MANIPUR | 0.000 | 0.000 | 0.000 | 0.000 |
| RAJASTHAN(SOLAR) BRPL-LT36 | 3.476 | 3.341 | 3.341 | 3.209 |
| RAJASTHAN(SOLAR) BYPL - LT-35 | 3.772 | 3.625 | 3.625 | 3.483 |
| RAJASTHAN(SOLAR) TPDDL LT-31 | 3.129 | 3.008 | 3.008 | 2.889 |
| TO JHARKHAND | 0.000 | 0.000 | 0.000 | 0.000 |
| TO ANDHRA | 0.000 | 0.000 | 0.000 | 0.000 |
| TO MADHYA PRADESH | 0.000 | 0.000 | 0.000 | 0.000 |
| TO MAHARASHTRA | -10.096 | -10.223 | -10.223 | -10.647 |
| TO UTTAR PRADESH | 0.000 | 0.000 | 0.000 | 0.000 |
| TO J&K | -216.620 | -221.902 | -221.902 | -231.093 |
| TO TAMILNADU | -0.389 | -0.393 | -0.393 | -0.405 |
| TO ASSAM | 0.000 | 0.000 | 0.000 | 0.000 |
| TO MEGHALAYA | 0.000 | 0.000 | 0.000 | 0.000 |
| TO TRIPURA | 0.000 | 0.000 | 0.000 | 0.000 |
| BTPS TO MP | 0.000 | 0.000 | 0.000 | 0.000 |
| TO HIMACHAL PRADESH | -236.833 | -245.680 | -245.680 | -256.077 |
| TO SIKKIM | 0.000 | 0.000 | 0.000 | 0.000 |
| POWER EXCHANGE(IEX) | 46.234 | 44.393 | 46.234 | 44.393 |
| TO POWER EXCHANGE (IEX) | -130.067 | -135.500 | -130.067 | -135.500 |
| POWER EXCHANGE(PX) | 0.000 | 0.000 | 0.000 | 0.000 |
| TO POWER EXCHANGE (PX) | 0.000 | 0.000 | 0.000 | 0.000 |
| TO SHARE PROJECT (HARYANA) | -14.625 | -15.237 | -14.625 | -15.237 |
| TO SHARE PROJECT (PUNJAB) | -14.625 | -15.237 | -14.625 | -15.237 |
| TOTAL | 2057.958 | 1944.428 | 1471.195 | 1360.431 |

C) AGENCY WISE BREAKUP OF ENERGY SCHEDULED DRAWL FROM THE GRID

| NAME OF THE STATION | AVAILABILITY AT POWER PLANT | AVAILABILITY AT DELHI PERIPHERY | ALLOCATION MADE BY NRLDC AT POWER PLANT | ALLOCATION MADE BY NRLDC AT DELHI PERIPHERY |
|----------------------------|-----------------------------|---------------------------------|---|---|
| NTPC - NR | 1210.666 | 1162.416 | 827.996 | 795.009 |
| NTPC - ER | 139.045 | 133.513 | 100.790 | 96.782 |
| NHPC | 44.092 | 42.364 | 44.003 | 42.279 |
| NPC | 49.969 | 47.959 | 49.969 | 47.959 |
| SASAN | 263.054 | 252.577 | 260.360 | 250.005 |
| KOTESHWAR | 7.830 | 7.518 | 7.830 | 7.518 |
| MUNDRA_UMPP | 0.000 | 0.000 | 0.000 | 0.000 |
| NATHPA JHAKRI | 15.777 | 15.149 | 11.770 | 11.302 |
| TEHRI | 12.805 | 12.293 | 12.805 | 12.293 |
| TALA | 0.871 | 0.836 | 0.871 | 0.836 |
| JHAJJAR | 364.777 | 349.942 | 226.443 | 217.293 |
| TALCHER | 0.000 | 0.000 | 0.000 | 0.000 |
| RAJASTHAN SOLAR(BRPL)T-36 | 3.476 | 3.341 | 3.341 | 3.209 |
| RAJASTHAN SOLAR(BYPL)T-35 | 3.772 | 3.625 | 3.625 | 3.483 |
| RAJASTHAN SOLAR(TPDDL)T-31 | 3.129 | 3.008 | 3.008 | 2.889 |
| DVC | 212.532 | 210.411 | 210.411 | 202.047 |
| CHATTISHGARH | 0.000 | 0.000 | 0.000 | 0.000 |
| TRIPURA | 0.000 | 0.000 | 0.000 | 0.000 |
| MEGHALAYA | 4.196 | 4.155 | 4.155 | 3.991 |
| MAHARASHTRA | 0.000 | 0.000 | 0.000 | 0.000 |
| ANDHRA | 0.654 | 0.649 | 0.649 | 0.624 |
| MADHYA PRADESH | 0.000 | 0.000 | 0.000 | 0.000 |
| METHON POWER (NDPL)-LT-06 | 175.330 | 173.579 | 173.579 | 166.713 |
| DVC MEJIA (LT-08)(BYPL) | 58.732 | 58.144 | 58.144 | 55.840 |
| URS | 0.000 | 0.000 | 0.000 | 0.000 |
| JAMMU & KASHMIR | 0.740 | 0.723 | 0.723 | 0.694 |
| HIMACHAL PRADESH | 5.580 | 5.404 | 5.404 | 5.191 |
| ASSAM | 0.000 | 0.000 | 0.000 | 0.000 |
| KARNATAKA | 0.000 | 0.000 | 0.000 | 0.000 |
| NAGALAND | 0.000 | 0.000 | 0.000 | 0.000 |
| DVC (FOR NDPL) LT-09 | 0.000 | 0.000 | 0.000 | 0.000 |
| HARYANA (LT -05) | 49.692 | 48.536 | 48.536 | 46.548 |
| SIKKIM | 5.365 | 5.271 | 5.271 | 5.063 |
| WEST BENGAL | 0.000 | 0.000 | 0.000 | 0.000 |
| UTTAR PRADESH | 2.892 | 2.792 | 2.792 | 2.668 |
| TAMILNADU | 0.000 | 0.000 | 0.000 | 0.000 |
| MANIPUR | 0.000 | 0.000 | 0.000 | 0.000 |
| POWER EXCHANGE(IEX) | 46.234 | 44.393 | 46.234 | 44.393 |
| POWER EXCHANGE(PX) | 0.000 | 0.000 | 0.000 | 0.000 |
| TOTAL | 2681.211 | 2588.600 | 2108.709 | 2024.627 |

D) AGENCY WISE BREAKUP OF ENERGY SCHEDULED BY NRLDC FOR EXPORT TO OTHER UTILITIES FROM DTL

| NAME OF THE STATION | AVAILABILITY AT POWER PLANT | AVAILABILITY AT PERIPHERY | ALLOCATION MADE BY NRLDC AT POWER PLANT | ALLOCATION MADE BY NRLDC AT POWER PERIPHERY |
|---|-----------------------------|---------------------------|---|---|
| TO JHARKHAND | 0.000 | 0.000 | 0.000 | 0.000 |
| TO ANDHRA | 0.000 | 0.000 | 0.000 | 0.000 |
| TO MADHYA PRADESH | 0.000 | 0.000 | 0.000 | 0.000 |
| TO MAHARASHTRA | -10.096 | -10.223 | -10.223 | -10.647 |
| TO J&K | -216.620 | -221.902 | -221.902 | -231.093 |
| TO UTTAR PRADESH | 0.000 | 0.000 | 0.000 | 0.000 |
| TO TAMILNADU | -0.389 | -0.393 | -0.393 | -0.405 |
| TO ASSAM | 0.000 | 0.000 | 0.000 | 0.000 |
| TO MEGHALAYA | 0.000 | 0.000 | 0.000 | 0.000 |
| TO TRIPURA | 0.000 | 0.000 | 0.000 | 0.000 |
| BTPS TO MP | 0.000 | 0.000 | 0.000 | 0.000 |
| TO HIMACHAL PRADESH | -236.833 | -245.680 | -245.680 | -256.077 |
| TO SIKKIM | 0.000 | 0.000 | 0.000 | 0.000 |
| TO POWER EXCHANGE (IEX) | -130.067 | -135.500 | -130.067 | -135.500 |
| TO POWER EXCHANGE (PX) | 0.000 | 0.000 | 0.000 | 0.000 |
| TO SHARE PROJECT (HARYANA) | -14.625 | -15.237 | -14.625 | -15.237 |
| TO SHARE PROJECT (PUNJAB) | -14.625 | -15.237 | -14.625 | -15.237 |
| TOTAL | -623.252 | -644.172 | -637.514 | -664.196 |
| TOTAL SCHEDULED DRAWAL FROM THE GRID | 2057.958 | 1944.428 | 1471.195 | 1360.431 |

| | |
|---|--|
| TOTAL CONSUMPTION INCLUDING AUX. OF GENERATING STNs. EXCLUDING BTPS | 1771.520 |
| NET CONSUMPTION | 1753.210 |
| AVAILABILITY WITHIN DELHI | 421.492 |
| ACTUAL DRAWAL FROM THE GRID | 1331.718 |
| OVER DRAWAL(+)/UNDER DRAWAL(-) FROM THE GRID ON THE BASIS OF SCHEDULED ALLOCATION MADE BY NRLDC TO DELHI AT PERIPHERY | -28.713 |
| LOAD SHEDDING | 1.266 |
| UNRESTRICTED DEMAND (GROSS) | 1772.786 |
| UNRESTRICTED DEMAND (NET) | 1754.476 |
| MAX. NET CONSUMPTION | 66.571 ON 09.02.2018 |
| MAX. LOAD SHEDDING | 473MW ON 21.02.2018 AT 12.30HRS. |
| PEAK LOAD | Peak Demand during the month |
| DAY PEAK | 3946MW AT 10.09.27HRS ON 09.02.2018 |
| EVENING PEAK | 3381MW AT 19.00.00HRS ON 08.02.2018 |
| P.L.F. OF GENCO AND PRAGATI STNs. | RPH GT PRAGATI RITHALA BAWANA Timarpur Okhla EDWPCL DMSWL |
| | 0.00% 17.35% 82.60% 0.00% 22.11% 121.74% 17.39% 53.81% |

9 **SHEDDING DETAILS DURING THE MONTH OF FEBRUARY 2018.**

ALL FIGURES IN MUs

| DATE | No. of Under Freq. Relay Operated | Shedding due to under frequency relay operation in MUs | | | | | Shedding due to Grid Restrictions (Over drawl / low freq.) | | | | |
|--------------|-----------------------------------|--|--------------|--------------|--------------|--------------|--|--------------|--------------|--------------|--------------|
| | | BSES | | NDPL | NDMC | TOTAL | BSES | | NDPL | NDMC | MES |
| | | BYPL | BRPL | | | | BYPL | BRPL | | | |
| 1 | 2 | 3 | 4 | 5 | 6 | 7=3 to 6 | 8 | 9 | 10 | 11 | 12 |
| 01.Feb.18 | 0 | 0.000 | 0.000 | 0.000 | 0.000 | 0.000 | 0.000 | 0.000 | 0.000 | 0.000 | 0.000 |
| 02.Feb.18 | 0 | 0.000 | 0.000 | 0.000 | 0.000 | 0.000 | 0.000 | 0.000 | 0.000 | 0.000 | 0.000 |
| 03.Feb.18 | 0 | 0.000 | 0.000 | 0.000 | 0.000 | 0.000 | 0.000 | 0.000 | 0.000 | 0.000 | 0.000 |
| 04.Feb.18 | 0 | 0.000 | 0.000 | 0.000 | 0.000 | 0.000 | 0.000 | 0.000 | 0.000 | 0.000 | 0.000 |
| 05.Feb.18 | 0 | 0.000 | 0.000 | 0.000 | 0.000 | 0.000 | 0.000 | 0.000 | 0.000 | 0.000 | 0.000 |
| 06.Feb.18 | 0 | 0.000 | 0.000 | 0.000 | 0.000 | 0.000 | 0.000 | 0.000 | 0.000 | 0.000 | 0.000 |
| 07.Feb.18 | 0 | 0.000 | 0.000 | 0.000 | 0.000 | 0.000 | 0.000 | 0.000 | 0.000 | 0.000 | 0.000 |
| 08.Feb.18 | 0 | 0.000 | 0.000 | 0.000 | 0.000 | 0.000 | 0.000 | 0.000 | 0.000 | 0.000 | 0.000 |
| 09.Feb.18 | 0 | 0.000 | 0.000 | 0.000 | 0.000 | 0.000 | 0.000 | 0.000 | 0.000 | 0.000 | 0.000 |
| 10.Feb.18 | 0 | 0.000 | 0.000 | 0.000 | 0.000 | 0.000 | 0.000 | 0.000 | 0.000 | 0.000 | 0.000 |
| 11.Feb.18 | 0 | 0.000 | 0.000 | 0.000 | 0.000 | 0.000 | 0.000 | 0.000 | 0.000 | 0.000 | 0.000 |
| 12.Feb.18 | 0 | 0.000 | 0.000 | 0.000 | 0.000 | 0.000 | 0.000 | 0.000 | 0.000 | 0.000 | 0.000 |
| 13.Feb.18 | 0 | 0.000 | 0.000 | 0.000 | 0.000 | 0.000 | 0.000 | 0.000 | 0.000 | 0.000 | 0.000 |
| 14.Feb.18 | 0 | 0.000 | 0.000 | 0.000 | 0.000 | 0.000 | 0.000 | 0.000 | 0.000 | 0.000 | 0.000 |
| 15.Feb.18 | 0 | 0.000 | 0.000 | 0.000 | 0.000 | 0.000 | 0.000 | 0.000 | 0.000 | 0.000 | 0.000 |
| 16.Feb.18 | 0 | 0.000 | 0.000 | 0.000 | 0.000 | 0.000 | 0.000 | 0.000 | 0.000 | 0.000 | 0.000 |
| 17.Feb.18 | 0 | 0.000 | 0.000 | 0.000 | 0.000 | 0.000 | 0.000 | 0.000 | 0.000 | 0.000 | 0.000 |
| 18.Feb.18 | 0 | 0.000 | 0.000 | 0.000 | 0.000 | 0.000 | 0.000 | 0.000 | 0.000 | 0.000 | 0.000 |
| 19.Feb.18 | 0 | 0.000 | 0.000 | 0.000 | 0.000 | 0.000 | 0.000 | 0.000 | 0.000 | 0.000 | 0.000 |
| 20.Feb.18 | 0 | 0.000 | 0.000 | 0.000 | 0.000 | 0.000 | 0.000 | 0.000 | 0.000 | 0.000 | 0.000 |
| 21.Feb.18 | 0 | 0.000 | 0.000 | 0.000 | 0.000 | 0.000 | 0.000 | 0.000 | 0.000 | 0.000 | 0.000 |
| 22.Feb.18 | 0 | 0.000 | 0.000 | 0.000 | 0.000 | 0.000 | 0.000 | 0.000 | 0.000 | 0.000 | 0.000 |
| 23.Feb.18 | 0 | 0.000 | 0.000 | 0.000 | 0.000 | 0.000 | 0.000 | 0.000 | 0.000 | 0.000 | 0.000 |
| 24.Feb.18 | 0 | 0.000 | 0.000 | 0.000 | 0.000 | 0.000 | 0.000 | 0.000 | 0.000 | 0.000 | 0.000 |
| 25.Feb.18 | 0 | 0.000 | 0.000 | 0.0001 | 0.000 | 0.000 | 0.000 | 0.000 | 0.000 | 0.000 | 0.000 |
| 26.Feb.18 | 0 | 0.000 | 0.000 | 0.000 | 0.000 | 0.000 | 0.000 | 0.000 | 0.000 | 0.000 | 0.000 |
| 27.Feb.18 | 0 | 0.000 | 0.000 | 0.000 | 0.000 | 0.000 | 0.000 | 0.000 | 0.000 | 0.000 | 0.000 |
| 28.Feb.18 | 0 | 0.000 | 0.000 | 0.000 | 0.000 | 0.000 | 0.000 | 0.000 | 0.000 | 0.000 | 0.000 |
| | | | | | | | | | | | |
| | | | | | | | | | | | |
| | | | | | | | | | | | |
| TOTAL | 0 | 0.000 | 0.000 | 0.000 | 0.000 | 0.000 | 0.000 | 0.000 | 0.000 | 0.000 | 0.000 |

ALL FIGURES IN MU_s

| Date | Shedding due to Transmission/Grid Constraints in Central Sector Stations / TTC / ATC VOILATION | | | | DUE TO NEW GRID CODE REGULATION DEVIATION | | | Shedding due to Transmission/Grid Constraints in Central sector stations | | | | Total | Total shedding due to grid restrictions |
|--------------|--|--------------|--------------|--------------|---|--------------|--------------|--|--------------|--------------|--------------|--------------|---|
| | BSES | | NDPL | NDMC | BSES | | TPDDL | BSES | | TPDDL | NDMC | | |
| | BYPL | BRPL | | | BYPL | BRPL | | BYPL | BRPL | | | | |
| | 13 | 14 | 15 | 16 | 17 | 18 | 19 | 20 | 21 | 22 | 23 | 24=8 to 23 | 25=7+24 |
| 01.Feb.18 | 0.000 | 0.000 | 0.000 | 0.000 | 0.000 | 0.000 | 0.000 | 0.000 | 0.000 | 0.000 | 0.000 | 0.000 | 0.000 |
| 02.Feb.18 | 0.000 | 0.000 | 0.000 | 0.000 | 0.000 | 0.000 | 0.000 | 0.000 | 0.000 | 0.000 | 0.000 | 0.000 | 0.000 |
| 03.Feb.18 | 0.000 | 0.000 | 0.000 | 0.000 | 0.000 | 0.000 | 0.000 | 0.000 | 0.000 | 0.000 | 0.000 | 0.000 | 0.000 |
| 04.Feb.18 | 0.000 | 0.000 | 0.000 | 0.000 | 0.000 | 0.000 | 0.000 | 0.000 | 0.000 | 0.000 | 0.000 | 0.000 | 0.000 |
| 05.Feb.18 | 0.000 | 0.000 | 0.000 | 0.000 | 0.000 | 0.000 | 0.000 | 0.000 | 0.000 | 0.000 | 0.000 | 0.000 | 0.000 |
| 06.Feb.18 | 0.000 | 0.000 | 0.000 | 0.000 | 0.000 | 0.000 | 0.000 | 0.000 | 0.000 | 0.000 | 0.000 | 0.000 | 0.000 |
| 07.Feb.18 | 0.000 | 0.000 | 0.000 | 0.000 | 0.000 | 0.000 | 0.000 | 0.000 | 0.000 | 0.000 | 0.000 | 0.000 | 0.000 |
| 08.Feb.18 | 0.000 | 0.000 | 0.000 | 0.000 | 0.000 | 0.000 | 0.000 | 0.000 | 0.000 | 0.000 | 0.000 | 0.000 | 0.000 |
| 09.Feb.18 | 0.000 | 0.000 | 0.000 | 0.000 | 0.000 | 0.000 | 0.000 | 0.000 | 0.000 | 0.000 | 0.000 | 0.000 | 0.000 |
| 10.Feb.18 | 0.000 | 0.000 | 0.000 | 0.000 | 0.000 | 0.000 | 0.000 | 0.000 | 0.000 | 0.000 | 0.000 | 0.000 | 0.000 |
| 11.Feb.18 | 0.000 | 0.000 | 0.000 | 0.000 | 0.000 | 0.000 | 0.000 | 0.000 | 0.000 | 0.000 | 0.000 | 0.000 | 0.000 |
| 12.Feb.18 | 0.000 | 0.000 | 0.000 | 0.000 | 0.000 | 0.000 | 0.000 | 0.000 | 0.000 | 0.000 | 0.000 | 0.000 | 0.000 |
| 13.Feb.18 | 0.000 | 0.000 | 0.000 | 0.000 | 0.000 | 0.000 | 0.000 | 0.000 | 0.000 | 0.000 | 0.000 | 0.000 | 0.000 |
| 14.Feb.18 | 0.000 | 0.000 | 0.000 | 0.000 | 0.000 | 0.000 | 0.000 | 0.000 | 0.000 | 0.000 | 0.000 | 0.000 | 0.000 |
| 15.Feb.18 | 0.000 | 0.000 | 0.000 | 0.000 | 0.000 | 0.000 | 0.000 | 0.000 | 0.000 | 0.000 | 0.000 | 0.000 | 0.000 |
| 16.Feb.18 | 0.000 | 0.000 | 0.000 | 0.000 | 0.000 | 0.000 | 0.000 | 0.000 | 0.000 | 0.000 | 0.000 | 0.000 | 0.000 |
| 17.Feb.18 | 0.000 | 0.000 | 0.000 | 0.000 | 0.000 | 0.000 | 0.000 | 0.000 | 0.000 | 0.000 | 0.000 | 0.000 | 0.000 |
| 18.Feb.18 | 0.000 | 0.000 | 0.000 | 0.000 | 0.000 | 0.000 | 0.000 | 0.000 | 0.000 | 0.000 | 0.000 | 0.000 | 0.000 |
| 19.Feb.18 | 0.000 | 0.000 | 0.000 | 0.000 | 0.000 | 0.000 | 0.000 | 0.000 | 0.000 | 0.000 | 0.000 | 0.000 | 0.000 |
| 20.Feb.18 | 0.000 | 0.000 | 0.000 | 0.000 | 0.000 | 0.000 | 0.000 | 0.000 | 0.000 | 0.000 | 0.000 | 0.000 | 0.000 |
| 21.Feb.18 | 0.000 | 0.000 | 0.000 | 0.000 | 0.000 | 0.000 | 0.000 | 0.000 | 0.000 | 0.000 | 0.000 | 0.000 | 0.000 |
| 22.Feb.18 | 0.000 | 0.000 | 0.000 | 0.000 | 0.000 | 0.000 | 0.000 | 0.000 | 0.000 | 0.000 | 0.000 | 0.000 | 0.000 |
| 23.Feb.18 | 0.000 | 0.000 | 0.000 | 0.000 | 0.000 | 0.000 | 0.000 | 0.000 | 0.000 | 0.000 | 0.000 | 0.000 | 0.000 |
| 24.Feb.18 | 0.000 | 0.000 | 0.000 | 0.000 | 0.000 | 0.000 | 0.000 | 0.000 | 0.000 | 0.000 | 0.000 | 0.000 | 0.000 |
| 25.Feb.18 | 0.000 | 0.000 | 0.000 | 0.000 | 0.000 | 0.000 | 0.000 | 0.000 | 0.000 | 0.000 | 0.000 | 0.000 | 0.000 |
| 26.Feb.18 | 0.000 | 0.000 | 0.000 | 0.000 | 0.000 | 0.000 | 0.000 | 0.000 | 0.000 | 0.000 | 0.000 | 0.000 | 0.000 |
| 27.Feb.18 | 0.000 | 0.000 | 0.000 | 0.000 | 0.000 | 0.000 | 0.000 | 0.000 | 0.000 | 0.000 | 0.000 | 0.000 | 0.000 |
| 28.Feb.18 | 0.000 | 0.000 | 0.000 | 0.000 | 0.000 | 0.000 | 0.000 | 0.000 | 0.000 | 0.000 | 0.000 | 0.000 | 0.000 |
| | | | | | | | | | | | | | |
| | | | | | | | | | | | | | |
| | | | | | | | | | | | | | |
| TOTAL | 0.000 | 0.000 | 0.000 | 0.000 | 0.000 | 0.000 | 0.000 | 0.000 | 0.000 | 0.000 | 0.000 | 0.000 | 0.000 |

ALL FIGURES IN MUs

| Date | DUE TO T&D CONSTRAINTS IN DELHI SYSTEM | | | | | | | | |
|--------------|--|--------------|--------------|--------------|--------------|--------------|--------------|--------------|--------------|
| | DTL | | | | | DISCOMS | | | |
| | BSES | | NDPL | NDMC | MES | BSES | | NDPL | NDMC |
| | BYPL | BRPL | | | | BYPL | BRPL | | |
| 26 | 27 | 28 | 29 | 30 | 31 | 32 | 33 | 34 | |
| 01.Feb.18 | 0.000 | 0.000 | 0.000 | 0.000 | 0.000 | 0.000 | 0.004 | 0.000 | 0.000 |
| 02.Feb.18 | 0.000 | 0.000 | 0.000 | 0.000 | 0.000 | 0.000 | 0.013 | 0.000 | 0.000 |
| 03.Feb.18 | 0.001 | 0.007 | 0.005 | 0.000 | 0.000 | 0.000 | 0.021 | 0.000 | 0.000 |
| 04.Feb.18 | 0.092 | 0.004 | 0.001 | 0.000 | 0.000 | 0.000 | 0.000 | 0.000 | 0.000 |
| 05.Feb.18 | 0.000 | 0.000 | 0.000 | 0.000 | 0.000 | 0.000 | 0.000 | 0.000 | 0.000 |
| 06.Feb.18 | 0.000 | 0.000 | 0.000 | 0.000 | 0.000 | 0.000 | 0.003 | 0.000 | 0.000 |
| 07.Feb.18 | 0.000 | 0.000 | 0.000 | 0.000 | 0.000 | 0.000 | 0.010 | 0.000 | 0.000 |
| 08.Feb.18 | 0.010 | 0.000 | 0.000 | 0.000 | 0.000 | 0.000 | 0.001 | 0.000 | 0.000 |
| 09.Feb.18 | 0.024 | 0.000 | 0.000 | 0.000 | 0.000 | 0.000 | 0.003 | 0.000 | 0.000 |
| 10.Feb.18 | 0.000 | 0.000 | 0.000 | 0.000 | 0.000 | 0.000 | 0.004 | 0.000 | 0.000 |
| 11.Feb.18 | 0.000 | 0.000 | 0.000 | 0.000 | 0.000 | 0.000 | 0.022 | 0.000 | 0.000 |
| 12.Feb.18 | 0.001 | 0.000 | 0.004 | 0.000 | 0.000 | 0.000 | 0.007 | 0.000 | 0.000 |
| 13.Feb.18 | 0.001 | 0.000 | 0.000 | 0.000 | 0.000 | 0.001 | 0.019 | 0.000 | 0.000 |
| 14.Feb.18 | 0.030 | 0.000 | 0.0001 | 0.000 | 0.000 | 0.008 | 0.002 | 0.000 | 0.000 |
| 15.Feb.18 | 0.001 | 0.017 | 0.000 | 0.000 | 0.000 | 0.004 | 0.005 | 0.007 | 0.000 |
| 16.Feb.18 | 0.000 | 0.000 | 0.001 | 0.000 | 0.000 | 0.000 | 0.021 | 0.004 | 0.000 |
| 17.Feb.18 | 0.000 | 0.000 | 0.000 | 0.000 | 0.000 | 0.000 | 0.086 | 0.011 | 0.000 |
| 18.Feb.18 | 0.000 | 0.000 | 0.000 | 0.000 | 0.000 | 0.002 | 0.003 | 0.0000 | 0.000 |
| 19.Feb.18 | 0.000 | 0.000 | 0.0000 | 0.000 | 0.000 | 0.011 | 0.004 | 0.000 | 0.000 |
| 20.Feb.18 | 0.000 | 0.000 | 0.024 | 0.000 | 0.000 | 0.000 | 0.009 | 0.000 | 0.000 |
| 21.Feb.18 | 0.056 | 0.522 | 0.001 | 0.005 | 0.000 | 0.000 | 0.001 | 0.001 | 0.000 |
| 22.Feb.18 | 0.000 | 0.000 | 0.000 | 0.000 | 0.000 | 0.003 | 0.005 | 0.0000 | 0.000 |
| 23.Feb.18 | 0.000 | 0.000 | 0.000 | 0.000 | 0.000 | 0.000 | 0.034 | 0.006 | 0.000 |
| 24.Feb.18 | 0.013 | 0.025 | 0.000 | 0.000 | 0.000 | 0.000 | 0.000 | 0.015 | 0.000 |
| 25.Feb.18 | 0.0000 | 0.000 | 0.000 | 0.000 | 0.000 | 0.004 | 0.025 | 0.000 | 0.000 |
| 26.Feb.18 | 0.000 | 0.000 | 0.000 | 0.000 | 0.000 | 0.000 | 0.004 | 0.000 | 0.000 |
| 27.Feb.18 | 0.006 | 0.000 | 0.000 | 0.000 | 0.000 | 0.000 | 0.001 | 0.000 | 0.000 |
| 28.Feb.18 | 0.002 | 0.024 | 0.000 | 0.000 | 0.000 | 0.002 | 0.003 | 0.000 | 0.000 |
| | | | | | | | | | |
| | | | | | | | | | |
| | | | | | | | | | |
| TOTAL | 0.237 | 0.599 | 0.036 | 0.005 | 0.000 | 0.035 | 0.310 | 0.044 | 0.000 |

ALL FIGURES IN MUs

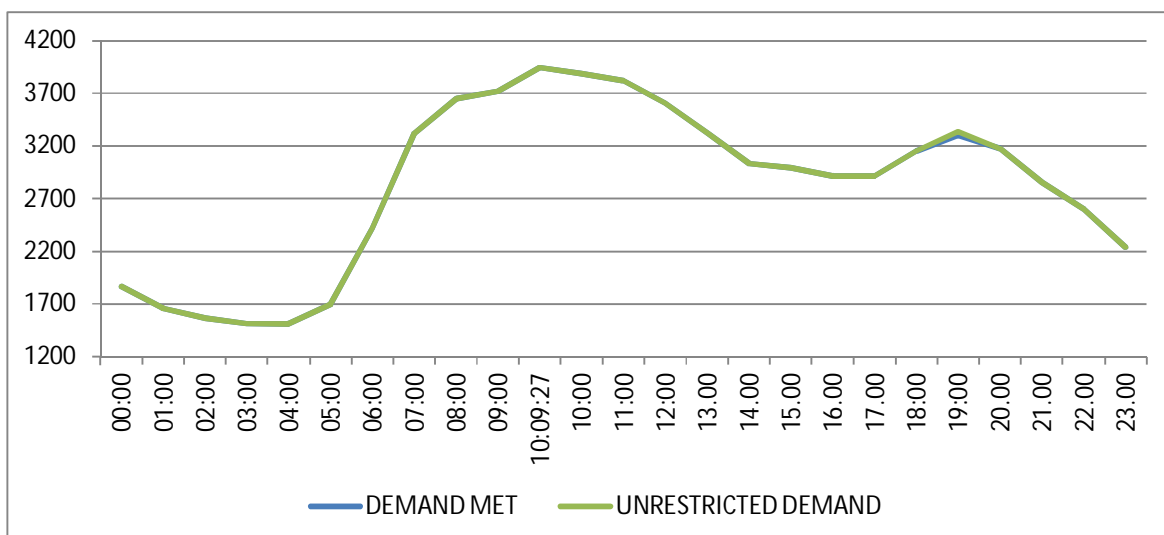
| DATE | OTHER AGENCIES LIKE GENCO, BBMB, BTPS ETC. | | | | THEFT PRONE SHEDDING | | | TOTAL SHEDDING DUE TO T&D CONSTS. & THEFT PRONE | GRAND TOTAL |
|--------------|---|--------------|--------------|--------------|----------------------|--------------|--------------|---|----------------|
| | BSES | | NDPL | NDMC | BSES | | NDPL | | |
| | BYPL | BRPL | | | BYPL | BRPL | | | |
| 1 | 35 | 36 | 37 | 38 | 39 | 40 | 41 | 42= 26 to 41 | 43 = 25 + 42 |
| 01.Feb.18 | 0.000 | 0.000 | 0.000 | 0.000 | 0.000 | 0.000 | 0.000 | 0.004 | 0.004 |
| 02.Feb.18 | 0.000 | 0.000 | 0.000 | 0.000 | 0.000 | 0.000 | 0.000 | 0.013 | 0.013 |
| 03.Feb.18 | 0.000 | 0.000 | 0.000 | 0.000 | 0.000 | 0.000 | 0.000 | 0.034 | 0.034 |
| 04.Feb.18 | 0.000 | 0.000 | 0.000 | 0.000 | 0.000 | 0.000 | 0.000 | 0.097 | 0.097 |
| 05.Feb.18 | 0.000 | 0.000 | 0.000 | 0.000 | 0.000 | 0.000 | 0.000 | 0.000 | 0.000 |
| 06.Feb.18 | 0.000 | 0.000 | 0.000 | 0.000 | 0.000 | 0.000 | 0.000 | 0.003 | 0.003 |
| 07.Feb.18 | 0.000 | 0.000 | 0.000 | 0.000 | 0.000 | 0.000 | 0.000 | 0.010 | 0.010 |
| 08.Feb.18 | 0.000 | 0.000 | 0.000 | 0.000 | 0.000 | 0.000 | 0.000 | 0.011 | 0.011 |
| 09.Feb.18 | 0.000 | 0.000 | 0.000 | 0.000 | 0.000 | 0.000 | 0.000 | 0.027 | 0.027 |
| 10.Feb.18 | 0.000 | 0.000 | 0.000 | 0.000 | 0.000 | 0.000 | 0.000 | 0.004 | 0.004 |
| 11.Feb.18 | 0.000 | 0.000 | 0.000 | 0.000 | 0.000 | 0.000 | 0.000 | 0.022 | 0.022 |
| 12.Feb.18 | 0.000 | 0.000 | 0.000 | 0.000 | 0.000 | 0.000 | 0.000 | 0.012 | 0.012 |
| 13.Feb.18 | 0.000 | 0.000 | 0.000 | 0.000 | 0.000 | 0.000 | 0.000 | 0.021 | 0.021 |
| 14.Feb.18 | 0.000 | 0.000 | 0.000 | 0.000 | 0.000 | 0.000 | 0.000 | 0.040 | 0.040 |
| 15.Feb.18 | 0.000 | 0.000 | 0.000 | 0.000 | 0.000 | 0.000 | 0.000 | 0.034 | 0.034 |
| 16.Feb.18 | 0.000 | 0.000 | 0.000 | 0.000 | 0.000 | 0.000 | 0.000 | 0.026 | 0.026 |
| 17.Feb.18 | 0.000 | 0.000 | 0.000 | 0.000 | 0.000 | 0.000 | 0.000 | 0.097 | 0.097 |
| 18.Feb.18 | 0.000 | 0.000 | 0.000 | 0.000 | 0.000 | 0.000 | 0.000 | 0.005 | 0.005 |
| 19.Feb.18 | 0.000 | 0.000 | 0.000 | 0.000 | 0.000 | 0.000 | 0.000 | 0.015 | 0.015 |
| 20.Feb.18 | 0.000 | 0.000 | 0.000 | 0.000 | 0.000 | 0.000 | 0.000 | 0.033 | 0.033 |
| 21.Feb.18 | 0.000 | 0.000 | 0.000 | 0.000 | 0.000 | 0.000 | 0.000 | 0.586 | 0.586 |
| 22.Feb.18 | 0.000 | 0.000 | 0.000 | 0.000 | 0.000 | 0.000 | 0.000 | 0.008 | 0.008 |
| 23.Feb.18 | 0.000 | 0.000 | 0.000 | 0.000 | 0.000 | 0.000 | 0.000 | 0.040 | 0.040 |
| 24.Feb.18 | 0.000 | 0.000 | 0.000 | 0.000 | 0.000 | 0.000 | 0.000 | 0.053 | 0.053 |
| 25.Feb.18 | 0.000 | 0.000 | 0.000 | 0.000 | 0.000 | 0.000 | 0.000 | 0.029 | 0.029 |
| 26.Feb.18 | 0.000 | 0.000 | 0.000 | 0.000 | 0.000 | 0.000 | 0.000 | 0.004 | 0.004 |
| 27.Feb.18 | 0.000 | 0.000 | 0.000 | 0.000 | 0.000 | 0.000 | 0.000 | 0.007 | 0.007 |
| 28.Feb.18 | 0.000 | 0.000 | 0.000 | 0.000 | 0.000 | 0.000 | 0.000 | 0.031 | 0.031 |
| | | | | | | | | | |
| | | | | | | | | | |
| | | | | | | | | | |
| TOTAL | 0.000 | 0.000 | 0.000 | 0.000 | 0.000 | 0.000 | 0.000 | 1.266 | 1.266 |

| DATE | (NET CONS.) | MAXI. DEMAND MET DURING THE DAY | TIME OF OCCURRENCE OF MAX DEMAND | SHEDDING AT THIS TIME | UN-RESTRICTED DEMAND | MAXIMUM UN-RESTRICTED DEMAND DURING THE DAY | TIME OF MAX. UN-REST. DEMAND | DEMAND AT THAT TIME | SHEDDING AT THAT TIME |
|--------------|-----------------|---------------------------------|----------------------------------|-----------------------|----------------------|---|------------------------------|---------------------|-----------------------|
| | In Mus. | IN MW | IN HRS. | IN MW | IN MW | IN MW | HRS. | IN MW | IN MW |
| 1 | 32 | 33 | 34 | 35 | 36=33+35 | 37=39+40 | 38 | 39 | 40 |
| 01.Feb.18 | 66.490 | 3753 | 09:45:24 | 0 | 3753 | 3753 | 09:45:24 | 3753 | 0 |
| 02.Feb.18 | 65.744 | 3884 | 09:59:59 | 0 | 3884 | 3884 | 09:59:59 | 3884 | 0 |
| 03.Feb.18 | 61.863 | 3783 | 10:17:09 | 0 | 3783 | 3783 | 10:17:09 | 3783 | 0 |
| 04.Feb.18 | 61.771 | 3752 | 10:21:59 | 0 | 3752 | 3752 | 10:21:59 | 3752 | 0 |
| 05.Feb.18 | 63.718 | 3718 | 10:00 | 0 | 3718 | 3718 | 10:00 | 3718 | 0 |
| 06.Feb.18 | 64.046 | 3742 | 10:00 | 0 | 3742 | 3742 | 10:00 | 3742 | 0 |
| 07.Feb.18 | 66.021 | 3818 | 10:29 | 0 | 3818 | 3818 | 10:29 | 3818 | 0 |
| 08.Feb.18 | 64.948 | 3724 | 09:58:53 | 0 | 3724 | 3724 | 09:58:53 | 3724 | 0 |
| 09.Feb.18 | 66.571 | 3946 | 10:09:27 | 0 | 3946 | 3946 | 10:09:27 | 3946 | 0 |
| 10.Feb.18 | 62.666 | 3726 | 10:22 | 0 | 3726 | 3726 | 10:22 | 3726 | 0 |
| 11.Feb.18 | 57.693 | 3707 | 10:47:40 | 0 | 3707 | 3707 | 10:47:40 | 3707 | 0 |
| 12.Feb.18 | 63.374 | 3736 | 09:46:54 | 0 | 3736 | 3736 | 09:46:54 | 3736 | 0 |
| 13.Feb.18 | 64.324 | 3826 | 10:01 | 0 | 3826 | 3826 | 10:01 | 3826 | 0 |
| 14.Feb.18 | 63.803 | 3944 | 09:50 | 0 | 3944 | 3944 | 09:50 | 3944 | 0 |
| 15.Feb.18 | 60.635 | 3708 | 09:59:24 | 1 | 3709 | 3709 | 09:59:24 | 3708 | 1 |
| 16.Feb.18 | 65.687 | 3826 | 10:31:25 | 0 | 3826 | 3827 | 10:00 | 3809 | 18 |
| 17.Feb.18 | 61.551 | 3569 | 09:51:56 | 5 | 3574 | 3574 | 09:51:56 | 3569 | 5 |
| 18.Feb.18 | 54.754 | 3591 | 10:23:51 | 0 | 3591 | 3591 | 10:23:51 | 3591 | 0 |
| 19.Feb.18 | 61.543 | 3549 | 10:02:46 | 0 | 3549 | 3549 | 10:02:46 | 3549 | 0 |
| 20.Feb.18 | 58.156 | 3590 | 10:12:52 | 0 | 3590 | 3590 | 10:12:52 | 3590 | 0 |
| 21.Feb.18 | 62.291 | 3544 | 09:54:32 | 0 | 3544 | 3544 | 09:54:32 | 3544 | 0 |
| 22.Feb.18 | 62.574 | 3495 | 10:16:07 | 0 | 3495 | 3495 | 10:16:07 | 3495 | 0 |
| 23.Feb.18 | 64.616 | 3599 | 10:32:34 | 0 | 3599 | 3599 | 10:32:34 | 3599 | 0 |
| 24.Feb.18 | 61.107 | 3521 | 10:10:39 | 0 | 3521 | 3521 | 10:10:39 | 3521 | 0 |
| 25.Feb.18 | 58.868 | 3367 | 10:48:27 | 0 | 3367 | 3367 | 10:48:27 | 3367 | 0 |
| 26.Feb.18 | 61.829 | 3404 | 10:32:11 | 0 | 3404 | 3404 | 10:32:11 | 3404 | 0 |
| 27.Feb.18 | 63.142 | 3425 | 10:30 | 2 | 3427 | 3427 | 10:30 | 3425 | 2 |
| 28.Feb.18 | 63.425 | 3578 | 10:15:10 | 0 | 3578 | 3578 | 10:15:10 | 3578 | 0 |
| | | | | | | | | | |
| | | | | | | | | | |
| | | | | | | | | | |
| TOTAL | 1753.210 | 3946 | 10:09:27 | 0 | 3946 | 3946 | 10:09:27 | 3946 | 0 |

10 LOAD PATTERN OF DELHI ON THE DAY OF PEAK DEMAND MET DURING FEBRUARY 2018 ON 09.02.2018- 3946MW AT 10.09.27HRS.

All figures in MW

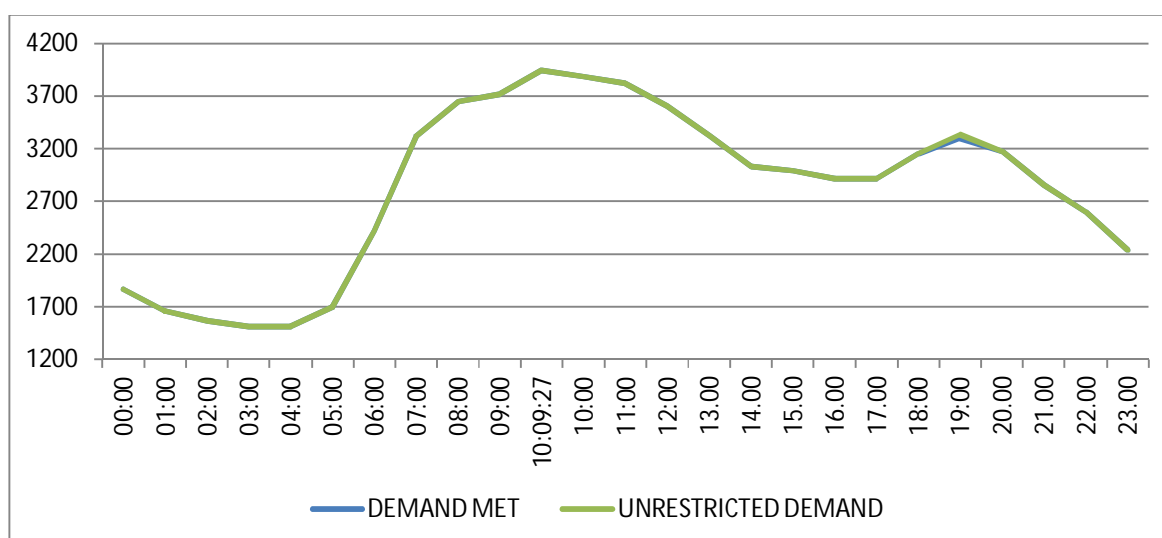
| Hrs. | Demand | Load Shedding | Un-Restricted Demand |
|-----------------------|---------------|---------------|----------------------|
| 00:00 | 1866 | 0 | 1866 |
| 01:00 | 1658 | 0 | 1658 |
| 02:00 | 1563 | 0 | 1563 |
| 03:00 | 1510 | 0 | 1510 |
| 04:00 | 1515 | 0 | 1515 |
| 05:00 | 1699 | 0 | 1699 |
| 06:00 | 2419 | 0 | 2419 |
| 07:00 | 3315 | 0 | 3315 |
| 08:00 | 3648 | 0 | 3648 |
| 09:00 | 3720 | 0 | 3720 |
| 10:09:27 | 3946 | 0 | 3946 |
| 10:00 | 3883 | 0 | 3883 |
| 11:00 | 3821 | 0 | 3821 |
| 12:00 | 3606 | 0 | 3606 |
| 13.00 | 3321 | 0 | 3321 |
| 14.00 | 3032 | 0 | 3032 |
| 15.00 | 2991 | 0 | 2991 |
| 16.00 | 2916 | 0 | 2916 |
| 17.00 | 2915 | 0 | 2915 |
| 18:00 | 3153 | 0 | 3153 |
| 19:00 | 3298 | 35 | 3333 |
| 20.00 | 3175 | 0 | 3175 |
| 21.00 | 2856 | 0 | 2856 |
| 22.00 | 2600 | 0 | 2600 |
| 23.00 | 2239 | 0 | 2239 |
| Total (IN MUS) | 66.571 | 0.027 | 66.598 |



11 LOAD PATTERN OF DELHI ON THE DAY OF MAXIMUM UN-RESTRICTED DEMAND DURING FEBRUARY 2018 ON 09.02.2018-3946MW AT 10.09.27HRS.

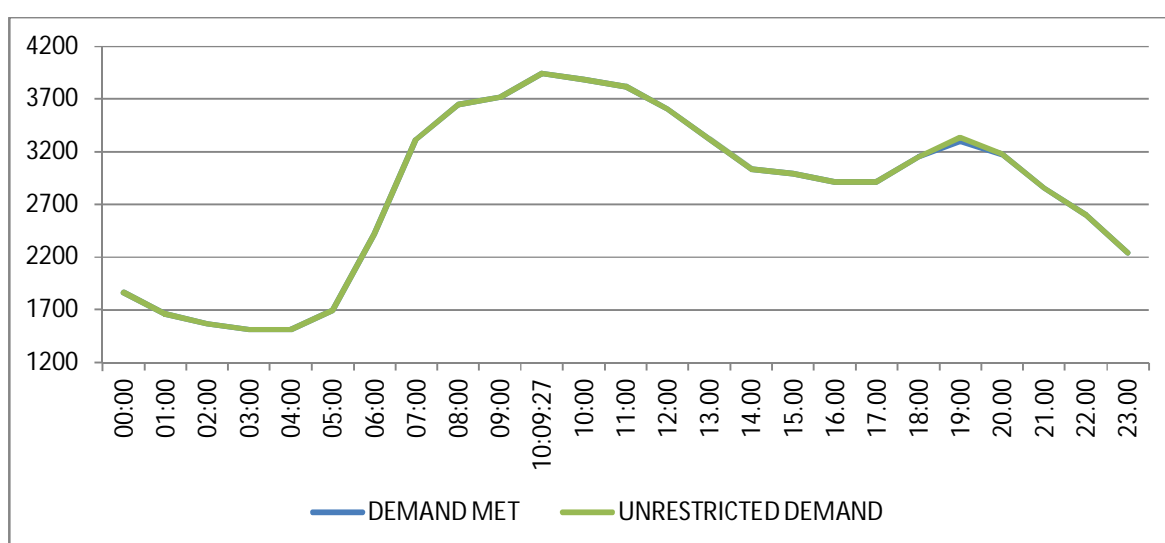
All figures in MW

| Hrs. | Demand | Load Shedding | Un-Restricted Demand |
|-----------------------|---------------|---------------|----------------------|
| 00:00 | 1866 | 0 | 1866 |
| 01:00 | 1658 | 0 | 1658 |
| 02:00 | 1563 | 0 | 1563 |
| 03:00 | 1510 | 0 | 1510 |
| 04:00 | 1515 | 0 | 1515 |
| 05:00 | 1699 | 0 | 1699 |
| 06:00 | 2419 | 0 | 2419 |
| 07:00 | 3315 | 0 | 3315 |
| 08:00 | 3648 | 0 | 3648 |
| 09:00 | 3720 | 0 | 3720 |
| 10:09:27 | 3946 | 0 | 3946 |
| 10:00 | 3883 | 0 | 3883 |
| 11:00 | 3821 | 0 | 3821 |
| 12:00 | 3606 | 0 | 3606 |
| 13:00 | 3321 | 0 | 3321 |
| 14:00 | 3032 | 0 | 3032 |
| 15:00 | 2991 | 0 | 2991 |
| 16:00 | 2916 | 0 | 2916 |
| 17:00 | 2915 | 0 | 2915 |
| 18:00 | 3153 | 0 | 3153 |
| 19:00 | 3298 | 35 | 3333 |
| 20:00 | 3175 | 0 | 3175 |
| 21:00 | 2856 | 0 | 2856 |
| 22:00 | 2600 | 0 | 2600 |
| 23:00 | 2239 | 0 | 2239 |
| Total (IN MUS) | 66.571 | 0.027 | 66.598 |



12 LOAD PATTERN OF DELHI ON THE DAY OF MAXIMUM ENERGY CONSUMED DURING FEBRUARY 2018 – 09.02.2018 – 66.571Mus All figures in MW

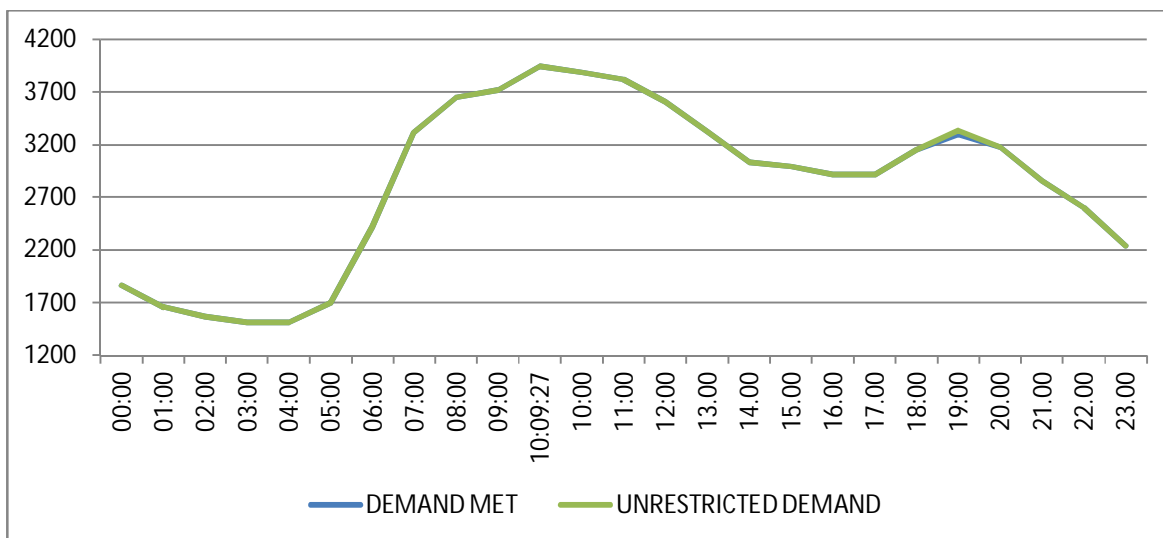
| Hrs. | Demand | Load Shedding | Un-Restricted Demand |
|-----------------------|---------------|---------------|----------------------|
| 00:00 | 1866 | 0 | 1866 |
| 01:00 | 1658 | 0 | 1658 |
| 02:00 | 1563 | 0 | 1563 |
| 03:00 | 1510 | 0 | 1510 |
| 04:00 | 1515 | 0 | 1515 |
| 05:00 | 1699 | 0 | 1699 |
| 06:00 | 2419 | 0 | 2419 |
| 07:00 | 3315 | 0 | 3315 |
| 08:00 | 3648 | 0 | 3648 |
| 09:00 | 3720 | 0 | 3720 |
| 10:09:27 | 3946 | 0 | 3946 |
| 10:00 | 3883 | 0 | 3883 |
| 11:00 | 3821 | 0 | 3821 |
| 12:00 | 3606 | 0 | 3606 |
| 13:00 | 3321 | 0 | 3321 |
| 14:00 | 3032 | 0 | 3032 |
| 15:00 | 2991 | 0 | 2991 |
| 16:00 | 2916 | 0 | 2916 |
| 17:00 | 2915 | 0 | 2915 |
| 18:00 | 3153 | 0 | 3153 |
| 19:00 | 3298 | 35 | 3333 |
| 20:00 | 3175 | 0 | 3175 |
| 21:00 | 2856 | 0 | 2856 |
| 22:00 | 2600 | 0 | 2600 |
| 23:00 | 2239 | 0 | 2239 |
| Total (IN MUS) | 66.571 | 0.027 | 66.598 |



13 LOAD PATTERN OF DELHI ON THE DAY OF MAXIMUM UNRESTRICTED ENERGY DEMAND DURING FEBRUARY 2018 – 09.02.2018 – 66.598 Mus

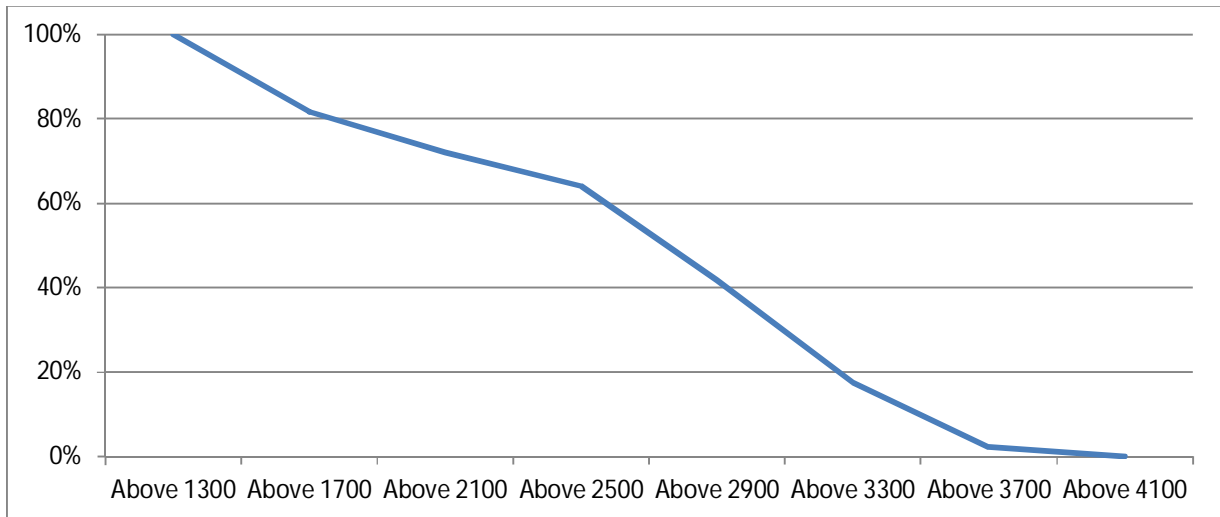
All figures in MW

| Hrs. | Demand | Load Shedding | Un-Restricted Demand |
|-----------------------|---------------|---------------|----------------------|
| 00:00 | 1866 | 0 | 1866 |
| 01:00 | 1658 | 0 | 1658 |
| 02:00 | 1563 | 0 | 1563 |
| 03:00 | 1510 | 0 | 1510 |
| 04:00 | 1515 | 0 | 1515 |
| 05:00 | 1699 | 0 | 1699 |
| 06:00 | 2419 | 0 | 2419 |
| 07:00 | 3315 | 0 | 3315 |
| 08:00 | 3648 | 0 | 3648 |
| 09:00 | 3720 | 0 | 3720 |
| 10:09:27 | 3946 | 0 | 3946 |
| 10:00 | 3883 | 0 | 3883 |
| 11:00 | 3821 | 0 | 3821 |
| 12:00 | 3606 | 0 | 3606 |
| 13:00 | 3321 | 0 | 3321 |
| 14:00 | 3032 | 0 | 3032 |
| 15:00 | 2991 | 0 | 2991 |
| 16:00 | 2916 | 0 | 2916 |
| 17:00 | 2915 | 0 | 2915 |
| 18:00 | 3153 | 0 | 3153 |
| 19:00 | 3298 | 35 | 3333 |
| 20:00 | 3175 | 0 | 3175 |
| 21:00 | 2856 | 0 | 2856 |
| 22:00 | 2600 | 0 | 2600 |
| 23:00 | 2239 | 0 | 2239 |
| Total (IN MUS) | 66.571 | 0.027 | 66.598 |



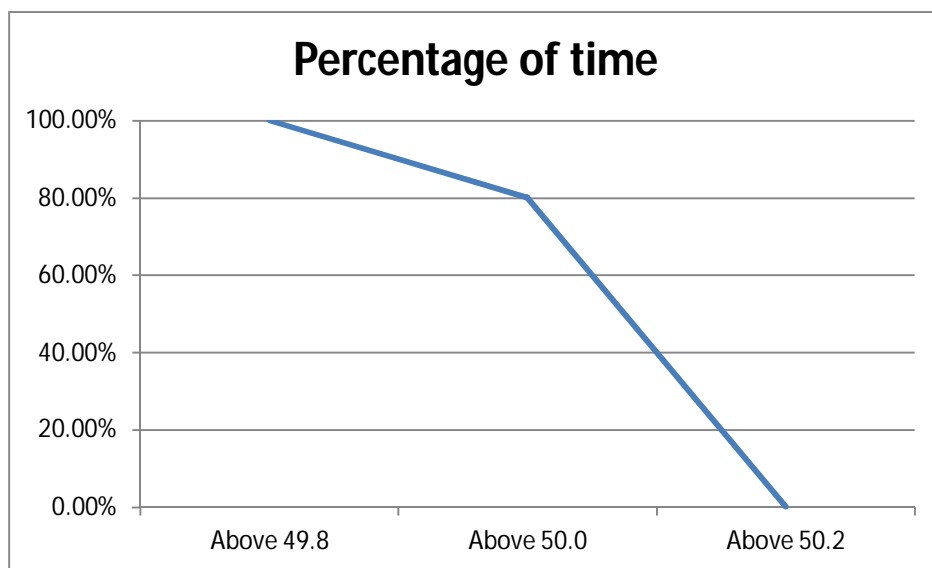
14 LOAD DURATION CURVE FOR FEBRUARY 2018

| Load in MW | Percentage of Time |
|------------|--------------------|
| Above 1300 | 100% |
| Above 1700 | 81.70% |
| Above 2100 | 72.10% |
| Above 2500 | 64.14% |
| Above 2900 | 41.85% |
| Above 3300 | 17.63% |
| Above 3700 | 2.16% |
| Above 4100 | 0.00% |



FREQUENCY ANALYSIS FOR THE MONTH OF FEBRUARY 2018

| Frequency Range in Hz. | Percentage of time |
|------------------------|--------------------|
| Above 49.8 | 99.83 |
| Above 50.0 | 82.96 |
| Above 50.2 | 0.00 |



16 VOLTAGE PROFILE OF 220 KV SUB-STATIONS IN DELHI DURING FEBRUARY 2018

All figures in kV

| Date | NARELA | | GAZIPUR | |
|-----------|--------|--------|---------|--------|
| | Max | Min | Max | Min |
| 01.Feb.18 | 235.88 | 221.18 | 242.07 | 231.11 |
| 02.Feb.18 | 233.82 | 220.15 | 239.75 | 225.95 |
| 03.Feb.18 | 234.72 | 221.44 | 240.52 | 227.24 |
| 04.Feb.18 | 234.59 | 221.56 | 241.68 | 230.08 |
| 05.Feb.18 | 233.95 | 219.63 | 242.07 | 229.43 |
| 06.Feb.18 | 234.46 | 217.82 | 242.84 | 227.88 |
| 07.Feb.18 | 234.33 | 216.92 | 241.81 | 226.98 |
| 08.Feb.18 | 233.04 | 216.41 | 241.17 | 0.00 |
| 09.Feb.18 | 236.40 | 219.89 | 242.20 | 0.00 |
| 10.Feb.18 | 235.36 | 220.92 | 240.78 | 225.95 |
| 11.Feb.18 | 240.78 | 226.21 | 243.10 | 232.01 |
| 12.Feb.18 | 242.97 | 226.08 | 245.68 | 0.00 |
| 13.Feb.18 | 240.91 | 225.43 | 244.65 | 229.82 |
| 14.Feb.18 | 240.14 | 224.40 | 247.49 | 228.92 |
| 15.Feb.18 | 239.10 | 223.11 | 246.20 | 231.11 |
| 16.Feb.18 | 238.85 | 222.98 | 246.20 | 228.14 |
| 17.Feb.18 | 240.39 | 225.56 | 246.97 | 231.11 |
| 18.Feb.18 | 239.75 | 226.85 | 246.20 | 230.08 |
| 19.Feb.18 | 239.62 | 192.80 | 245.42 | 230.21 |
| 20.Feb.18 | 238.20 | 224.92 | 245.68 | 231.75 |
| 21.Feb.18 | 238.85 | 225.05 | 260.51 | 0.00 |
| 22.Feb.18 | 239.10 | 226.34 | 245.04 | 231.11 |
| 23.Feb.18 | 238.59 | 226.21 | 243.62 | 227.88 |
| 24.Feb.18 | 236.01 | 228.14 | 245.94 | 230.72 |
| 25.Feb.18 | 240.14 | 228.53 | 244.91 | 233.30 |
| 26.Feb.18 | 239.10 | 224.66 | 244.91 | 228.92 |
| 27.Feb.18 | 237.81 | 225.05 | 244.00 | 229.17 |
| 28.Feb.18 | 235.88 | 226.59 | 239.62 | 230.59 |
| | | | | |
| | | | | |
| | | | | |

17 VOLTAGE PROFILE OF 400 KV SUB-STATIONS IN DELHI DURING FEBRUARY 2018

All figures in kV

| Date | 400kV Bamnauli Grid Sub-Station | | | | |
|-----------|---------------------------------|----------|--------|----------|------------|
| | Max KV | Max Time | Min KV | Min Time | Average KV |
| 01.Feb.18 | 422.08 | 4:01:23 | 401.68 | 18:36:25 | 410.90 |
| 02.Feb.18 | 419.26 | 4:00:47 | 395.11 | 6:51:57 | 409.75 |
| 03.Feb.18 | 420.90 | 3:02:20 | 392.76 | 6:54:00 | 409.41 |
| 04.Feb.18 | 420.67 | 4:01:13 | 403.08 | 10:23:34 | 412.88 |
| 05.Feb.18 | 419.50 | 2:59:36 | 400.50 | 9:32:28 | 410.76 |
| 06.Feb.18 | 421.61 | 4:01:38 | 397.92 | 9:28:40 | 410.51 |
| 07.Feb.18 | 419.03 | 0:01:02 | 396.99 | 10:07:23 | 411.71 |
| 08.Feb.18 | 418.32 | 4:00:46 | 397.92 | 10:16:48 | 409.22 |
| 09.Feb.18 | 418.56 | 4:00:48 | 395.58 | 10:17:59 | 408.87 |
| 10.Feb.18 | 419.73 | 4:01:32 | 396.05 | 10:47:12 | 409.00 |
| 11.Feb.18 | 420.67 | 4:02:04 | 404.49 | 9:34:55 | 413.67 |
| 12.Feb.18 | 424.42 | 3:59:18 | 398.39 | 18:51:30 | 411.45 |
| 13.Feb.18 | 423.72 | 4:00:35 | 397.22 | 9:20:52 | 410.38 |
| 14.Feb.18 | 421.84 | 4:00:04 | 398.16 | 9:24:25 | 410.22 |
| 15.Feb.18 | 421.84 | 4:01:57 | 400.27 | 9:31:08 | 411.08 |
| 16.Feb.18 | 421.61 | 4:00:42 | 397.92 | 10:10:31 | 410.65 |
| 17.Feb.18 | 423.25 | 4:01:33 | 399.57 | 10:24:45 | 410.76 |
| 18.Feb.18 | 421.84 | 4:02:45 | 401.44 | 9:47:38 | 412.51 |
| 19.Feb.18 | 421.61 | 4:00:34 | 399.80 | 9:53:52 | 411.08 |
| 20.Feb.18 | 421.37 | 4:01:44 | 400.50 | 9:26:28 | 411.16 |
| 21.Feb.18 | 420.43 | 3:59:47 | 396.75 | 10:41:38 | 408.87 |
| 22.Feb.18 | 419.26 | 4:01:12 | 400.74 | 6:33:23 | 409.63 |
| 23.Feb.18 | 418.56 | 4:02:24 | 399.33 | 6:40:55 | 409.87 |
| 24.Feb.18 | 420.43 | 4:00:38 | 400.27 | 9:35:48 | 409.58 |
| 25.Feb.18 | 421.61 | 4:00:41 | 405.19 | 6:40:01 | 413.29 |
| 26.Feb.18 | 422.08 | 4:00:16 | 400.97 | 10:15:56 | 410.57 |
| 27.Feb.18 | 420.67 | 4:00:49 | 399.80 | 7:14:49 | 408.74 |
| 28.Feb.18 | 417.15 | 3:59:32 | 401.68 | 18:54:14 | 409.23 |
| | | | | | |
| | | | | | |
| | | | | | |

All figures in kV

| Date | 400kV Bawana Grid Sub-Station | | | | |
|-----------|-------------------------------|----------|--------|----------|------------|
| | Max KV | Max Time | Min KV | Min Time | Average KV |
| 01.Feb.18 | 428.64 | 3:03:07 | 409.88 | 18:37:44 | 418.42 |
| 02.Feb.18 | 424.89 | 4:00:17 | 404.49 | 6:54:24 | 416.73 |
| 03.Feb.18 | 427.23 | 3:04:29 | 405.66 | 6:54:57 | 417.01 |
| 04.Feb.18 | 427.23 | 4:01:37 | 411.29 | 10:10:04 | 419.45 |
| 05.Feb.18 | 426.06 | 2:59:36 | 409.18 | 9:33:34 | 416.81 |
| 06.Feb.18 | 426.06 | 4:01:37 | 405.43 | 9:32:13 | 416.23 |
| 07.Feb.18 | 426.53 | 0:03:04 | 402.61 | 9:44:04 | 415.27 |
| 08.Feb.18 | 422.78 | 4:01:16 | 402.61 | 11:06:02 | 413.98 |
| 09.Feb.18 | 425.12 | 3:00:42 | 400.74 | 11:07:37 | 414.15 |
| 10.Feb.18 | 423.95 | 2:58:23 | 401.91 | 11:11:31 | 414.06 |
| 11.Feb.18 | 427.47 | 17:05:46 | 411.06 | 9:37:24 | 419.69 |
| 12.Feb.18 | 431.22 | 3:00:12 | 405.66 | 18:49:53 | 420.69 |
| 13.Feb.18 | 430.28 | 4:01:20 | 409.18 | 9:50:30 | 418.78 |
| 14.Feb.18 | 428.88 | 2:03:04 | 408.71 | 9:38:07 | 417.97 |
| 15.Feb.18 | 426.53 | 4:03:19 | 407.30 | 18:52:55 | 417.54 |
| 16.Feb.18 | 427.23 | 4:02:06 | 405.66 | 10:10:52 | 416.80 |
| 17.Feb.18 | 428.88 | 4:03:24 | 408.48 | 10:40:08 | 417.23 |
| 18.Feb.18 | 427.70 | 4:15:20 | 410.82 | 9:49:14 | 419.64 |
| 19.Feb.18 | 429.58 | 2:15:35 | 408.01 | 10:12:38 | 416.95 |
| 20.Feb.18 | 425.59 | 2:59:29 | 408.71 | 10:21:12 | 416.52 |
| 21.Feb.18 | 424.89 | 3:59:56 | 405.66 | 10:43:11 | 415.50 |
| 22.Feb.18 | 425.12 | 2:32:51 | 407.54 | 11:02:48 | 416.10 |
| 23.Feb.18 | 424.42 | 4:01:22 | 407.54 | 10:13:02 | 416.62 |
| 24.Feb.18 | 426.53 | 4:01:07 | 409.65 | 11:21:18 | 417.66 |
| 25.Feb.18 | 428.64 | 4:01:42 | 411.29 | 18:51:53 | 419.81 |
| 26.Feb.18 | 427.70 | 3:59:54 | 408.71 | 10:22:04 | 416.79 |
| 27.Feb.18 | 426.77 | 4:00:31 | 406.37 | 7:14:29 | 415.55 |
| 28.Feb.18 | 422.78 | 3:05:01 | 408.94 | 18:40:24 | 416.08 |
| | | | | | |
| | | | | | |
| | | | | | |

18 DETAILS OF LUMPED CAPACITORS AT NEAREST 220 KV SUBSTATION

| Sl. No | SUB-STATION | INSTALLED CAPACITY | | | |
|----------|-------------------------|--------------------|--------------|---------------|---------------|
| | | 66KV | 33kV | 11kV | TOTAL |
| 1 | IP YARD | | 30.00 | | 30.00 |
| 1 | Kamla Market | | | 16.35 | 16.35 |
| 2 | Minto Road | | | | 0.00 |
| 3 | GB Pant Hosp | | | 10.48 | 10.48 |
| 4 | Delhi Gate | | | 16.30 | 16.30 |
| 5 | Tilakmarg | | | 5.04 | 5.04 |
| 7 | Cannaught Place | | | 10.08 | 10.08 |
| 8 | Kilokri | | 10.08 | 10.48 | 20.56 |
| 9 | NDSE-II | | | | 0.00 |
| 11 | Nizamuddin | | | | 0.00 |
| 12 | Exhibition-I | | | | 0.00 |
| 13 | Exhibition-II | | | | 0.00 |
| 14 | Defence Colony | | | | 0.00 |
| 15 | IG Stadium | | 10.08 | 5.45 | 15.53 |
| 16 | Lajpat Nagar | | | | 0.00 |
| 17 | IP Estate | | | 10.90 | 10.90 |
| 18 | D.D.U.Marg | | | 21.60 | 21.60 |
| | | 0.00 | 50.16 | 106.68 | 156.84 |
| 2 | Electric Lane | | | | |
| 1 | Electric Lane | | | 5.04 | 5.04 |
| 2 | Scindia House | | | 10.44 | 10.44 |
| 3 | Mandi House | | | 10.80 | 10.80 |
| 4 | Raisina Road | | | 10.08 | 10.08 |
| 5 | Raja Bazar | | | 10.08 | 10.08 |
| | | 0.00 | 0.00 | 46.44 | 46.44 |
| 3 | RPH Station | | 20.00 | | 20.00 |
| 1 | Lahori Gate | | | 10.49 | 10.49 |
| 2 | Jama Masjid | | | 10.48 | 10.48 |
| 4 | Kamla Market | | | | 0.00 |
| 5 | Minto Road | | | 10.90 | 10.90 |
| 6 | GB Pant Hosp | | | | 0.00 |
| 7 | IG Stadium | | | | 0.00 |
| | | 0.00 | 20.00 | 31.87 | 51.87 |
| 4 | Parkstreet S/stn | 20.00 | 20.00 | | 40.00 |
| 1 | Shastri Park | | 0.00 | 5.45 | 5.45 |
| 2 | Faiz Road | | | 18.05 | 18.05 |
| 3 | Motia Khan | | | 16.30 | 16.30 |
| 4 | Prasad Nagar | | | 16.25 | 16.25 |
| 5 | Anand Parbat | | | 10.80 | 10.80 |
| 6 | Shankar Road | | | 10.44 | 10.44 |
| 7 | Rama Road | | | 0.00 | 0.00 |
| 8 | Baird Road | | | 10.08 | 10.08 |
| 9 | Hanuman Road | | | 10.08 | 10.08 |
| 10 | Pusa | | | 5.44 | 5.44 |
| 11 | Ridge Valley | | | 0.00 | 0.00 |
| 12 | B. D. Marg | | | 5.40 | 5.40 |
| 13 | Nirman Bhawan | | | 5.04 | 5.04 |
| | | 20.00 | 20.00 | 113.33 | 153.33 |
| 5 | Naraina S/stn | | 20.00 | 5.04 | 25.04 |
| 1 | DMS | | | 10.85 | 10.85 |
| 2 | Mayapuri | | 10.87 | 10.40 | 21.27 |
| 3 | Inderpuri | | 13.26 | 5.04 | 18.30 |
| 4 | Rewari line | | | | 0.00 |
| 5 | Khyber Lane | | 10.05 | | 10.05 |
| 6 | Kirbi Place | | 10.05 | | 10.05 |
| 7 | Payal | | | 10.08 | 10.08 |
| 8 | A-21 Naraina | | | 4.80 | 4.80 |
| 8 | Saraswati Garden | | | 10.08 | 10.08 |
| | | 0.00 | 64.23 | 56.29 | 120.52 |

| SI. No | SUB-STATION | INSTALLED CAPACITY | | | |
|-----------|------------------------------|--------------------|--------------|---------------|---------------|
| | | 66KV | 33kV | 11kV | TOTAL |
| 6 | Mehrauli S/stn | 80.00 | | 5.04 | 85.04 |
| 1 | Adchini | | | 14.61 | 14.61 |
| 2 | Andheria Bagh | | | 10.85 | 10.85 |
| 3 | IIT | | | 10.90 | 10.90 |
| 4 | JNU | | 10.03 | 10.03 | 20.06 |
| 5 | Bijwasan | | | 15.47 | 15.47 |
| 6 | DC Saket | | 10.08 | 9.98 | 20.06 |
| 7 | Malviya Nagar | | | | 0.00 |
| 8 | C Dot | | | 17.68 | 17.68 |
| 9 | Vasant kunj B-Blk | 21.79 | | 10.90 | 32.69 |
| 10 | Vasant kunj C-Blk | 20.16 | | 10.48 | 30.64 |
| 11 | Palam | | | | 0.00 |
| 12 | IGNOU | | | 14.54 | 14.54 |
| 13 | R. K. Puram-I | | | 10.07 | 10.07 |
| 14 | Vasant Vihar | | | 19.25 | 19.25 |
| 15 | Pusp Vihar | | | 10.44 | 10.44 |
| 16 | Bhikaji Cama Place | | 10.08 | 10.07 | 20.15 |
| | | 121.95 | 30.19 | 180.31 | 332.45 |
| 7 | Vasantkunj S/stn | 40.00 | | 5.04 | 45.04 |
| 1 | R. K. Puram-II | | | 10.80 | 10.80 |
| 2 | Vasant kunj C-Blk | | | | 0.00 |
| 3 | Vasant kunj D-Blk | | | 9.63 | 9.63 |
| 4 | Ridge Valley | | | | 0.00 |
| | | 40.00 | 0.00 | 25.47 | 65.47 |
| 8 | Okhla S/stn | 60.00 | 10.00 | 5.04 | 75.04 |
| 1 | Balaji | | | 10.80 | 10.80 |
| 2 | East of Kailash | | | 15.89 | 15.89 |
| 3 | Alaknanda | | | 16.30 | 16.30 |
| 4 | Malviya Nagar | 21.79 | 20.16 | 10.85 | 52.80 |
| 5 | Masjid Moth | | | 16.30 | 16.30 |
| 6 | Nehru Place | | | 21.34 | 21.34 |
| 7 | Okhla Ph-I | 21.79 | | 16.30 | 38.09 |
| 8 | Okhla Ph-II | | 20.93 | 15.47 | 36.40 |
| 9 | Shivalik | | | 10.80 | 10.80 |
| 10 | Batra | | | 15.90 | 15.90 |
| 11 | VSNL | | | 10.90 | 10.90 |
| 12 | Siri Fort | | | 10.49 | 10.49 |
| 13 | Tuglakabad | | | 18.05 | 18.05 |
| | | 103.58 | 51.09 | 194.43 | 349.10 |
| 9 | Lodhi Road S/stn | | | 20.00 | 20.00 |
| 1 | Defence Colony | | | 14.85 | 14.85 |
| 2 | Hudco | | | 10.90 | 10.90 |
| 3 | Lajpat Nagar | | | 10.90 | 10.90 |
| 4 | Nizamuddin | | | 10.44 | 10.44 |
| 5 | Vidyut Bhawan (Shahjahan Rd) | | | 10.80 | 10.80 |
| 6 | Ex. Gr. II | | | 0.00 | 0.00 |
| 7 | IHC | | | 0.00 | 0.00 |
| | | 0.00 | 0.00 | 77.89 | 77.89 |
| 10 | Sarita Vihar S/stn | 20.00 | | 5.04 | 25.04 |
| 1 | Sarita Vihar | | | 10.07 | 10.07 |
| 2 | MCIE | | | 10.06 | 10.06 |
| 3 | Mathura Road | 20.16 | | 11.69 | 31.85 |
| 4 | Jamia Millia | | | 10.89 | 10.89 |
| 5 | Sarai Julena | | 10.08 | 16.29 | 26.37 |
| 6 | Jasola | | | 5.44 | 5.44 |
| | | 40.16 | 10.08 | 69.48 | 119.72 |

| SI. No | SUB-STATION | INSTALLED CAPACITY | | | |
|-----------|---------------------------------|--------------------|--------------|---------------|---------------|
| | | 66KV | 33kV | 11kV | TOTAL |
| 11 | Wazirabad | | | | |
| 1 | Bhagirathi | | 14.40 | 18.10 | 32.50 |
| 2 | Ghonda | 0.00 | 22.56 | 15.94 | 38.50 |
| 3 | Seelam Pur | | 10.08 | 21.39 | 31.47 |
| 4 | Dwarkapuri | | | 15.46 | 15.46 |
| 5 | Nandnagri | 20.16 | | 16.35 | 36.51 |
| 6 | Yamuna Vihar | | | 14.40 | 14.40 |
| 7 | East of Loni Road | | | 18.00 | 18.00 |
| 8 | Shastri Park | | | 10.90 | 10.90 |
| 9 | Karawal Nagar | | | 5.40 | 5.40 |
| 10 | Sonia Vihar | | | 14.70 | 14.70 |
| | | 20.16 | 47.04 | 150.64 | 217.84 |
| 12 | Geeta Colony | | | | |
| 1 | Geeta Colony | | | 10.49 | 10.49 |
| 2 | Kanti Nagar | | | 18.10 | 18.10 |
| 3 | Kailash Nagar | | | 15.48 | 15.48 |
| 4 | Seelam Pur | | | | 0.00 |
| 5 | Shakar Pur | | | 10.80 | 10.80 |
| | | 0.00 | 0.00 | 54.87 | 54.87 |
| 13 | Gazipur S/stn | 40.00 | | 5.04 | 45.04 |
| 1 | Dallupura | 0.00 | | 10.90 | 10.90 |
| 2 | Vivek Vihar | | | 9.57 | 9.57 |
| 3 | GT Road | | | 10.85 | 10.85 |
| 4 | Kondli | 20.16 | | 10.85 | 31.01 |
| 5 | MVR-I | | | 10.90 | 10.90 |
| 6 | MVR-II | 20.16 | | 10.44 | 30.60 |
| 7 | PPG Ind. Area | | | 10.06 | 10.06 |
| 8 | New Kondli | | | 21.60 | 21.60 |
| | | 80.32 | 0.00 | 100.21 | 180.53 |
| 14 | Patparganj S/stn | 40.00 | 20.00 | 5.04 | 65.04 |
| 1 | GH-I | 19.89 | | 21.25 | 41.14 |
| 2 | GH-II | 20.09 | | 10.90 | 30.99 |
| 3 | CBD | | 10.03 | 15.48 | 25.51 |
| 4 | Guru Angad Nagar | | | 15.49 | 15.49 |
| 5 | Karkadooma | | 10.80 | 10.44 | 21.24 |
| 6 | Preet Vihar | | | 10.07 | 10.07 |
| 7 | CBD-II | | | 10.80 | 10.80 |
| 8 | Shakarpur | | | | 0.00 |
| 9 | Jhilmil | | | 10.80 | 10.80 |
| 10 | Dilshad Garden | 20.16 | | 16.35 | 36.51 |
| 11 | Khichripur | 21.79 | | 15.89 | 37.68 |
| 12 | Mother Dairy | | | | 0.00 |
| 13 | Scope Building | | | | 0.00 |
| 14 | Vivek Vihar | | | | 0.00 |
| 15 | Akhardham | | | 14.60 | 14.60 |
| | | 121.93 | 40.83 | 157.11 | 319.87 |
| 15 | Najafgarh S/stn | 60.00 | | 5.04 | 65.04 |
| 1 | A4 Paschim Vihar | | | 10.80 | 10.80 |
| 2 | Nangloi | 21.73 | | 15.84 | 37.57 |
| 3 | Nangloi W/W | 20.89 | | 10.85 | 31.74 |
| 4 | Pankha Road | | | 15.88 | 15.88 |
| 5 | Jaffarpur | | | 26.23 | 26.23 |
| 7 | Inst. Area Janakpuri (Sagarpur) | | | 17.60 | 17.60 |
| 8 | Paschimpuri | | 10.05 | 15.47 | 25.52 |
| 9 | Paschim Vihar | 41.83 | | 15.43 | 57.26 |
| 10 | Mukherjee Park | | | 20.83 | 20.83 |
| 11 | Udyog Nagar | | | 10.43 | 10.43 |
| 12 | Choukhandi | | | 10.07 | 10.07 |
| 13 | DJB Najafgarh | | | 21.60 | 21.60 |
| | | 144.45 | 10.05 | 196.07 | 350.57 |

| Sl. No | SUB-STATION | INSTALLED CAPACITY | | | |
|-----------|----------------------------|--------------------|--------------|---------------|---------------|
| | | 66KV | 33kv | 11kv | TOTAL |
| 16 | Pappankalan-I S/stn | 20.00 | | 5.04 | 25.04 |
| 1 | Bindapur Grid G-3 PPK | 21.73 | | 15.85 | 37.58 |
| 2 | Bodella-I | 20.10 | | 16.24 | 36.34 |
| 3 | Bodella-II | 21.73 | | 17.64 | 39.37 |
| 4 | DC Janakpuri | | | 10.03 | 10.03 |
| 5 | G-2 PPK (Nasirpur) | | | 16.20 | 16.20 |
| 6 | G-5 PPK (Matiala) | | | 22.71 | 22.71 |
| 7 | G-6 PPK | | | 12.60 | 12.60 |
| 8 | G-15 PPK | | | 10.80 | 10.80 |
| 9 | Harinagar | 21.18 | | 16.25 | 37.43 |
| 10 | Rewari line | | | 5.44 | 5.44 |
| | | 104.74 | 0.00 | 148.80 | 253.54 |
| 17 | BBMB Rohtak Road | | | | |
| 1 | S.B. Mill | | | 10.07 | 10.07 |
| 2 | Rama Road | | | 10.88 | 10.88 |
| 3 | Ram Pura | | | 10.48 | 10.48 |
| 4 | Rohtak Road | | | 10.08 | 10.08 |
| 5 | Vishal | | | 10.40 | 10.40 |
| 6 | Madipur | | | 10.43 | 10.43 |
| 7 | Sudershan Park | | | 10.08 | 10.08 |
| 8 | Kirti Nagar | | | 5.44 | 5.44 |
| | | 0.00 | 0.00 | 77.86 | 77.86 |
| 18 | Shalimarbagh S/stn | | 40.00 | 6.00 | 46.00 |
| 1 | S.G.T. Nagar | | | 5.44 | 5.44 |
| 2 | Ashok Vihar | | | 0.00 | 0.00 |
| 3 | Haiderpur | | | 11.39 | 11.39 |
| 4 | SMB FC | | | 12.64 | 12.64 |
| 5 | Rani Bagh | | | 5.44 | 5.44 |
| 6 | SMB KHOSLA | | | 5.44 | 5.44 |
| | | 0.00 | 40.00 | 46.35 | 86.35 |
| 19 | Subzimandi S/stn | | | 6.00 | 6.00 |
| 1 | Shakti Nagar | | | 5.04 | 5.04 |
| 2 | Gulabibagh | | | 10.88 | 10.88 |
| 3 | Shahzadabagh | | | 15.79 | 15.79 |
| 4 | DU | | | 5.44 | 5.44 |
| 5 | Tripolia | | | 10.88 | 10.88 |
| 6 | B. G. Road | | | 5.40 | 5.40 |
| | | 0.00 | 0.00 | 59.43 | 59.43 |
| 20 | Narela S/stn | 40.00 | | 5.04 | 45.04 |
| 1 | A-7 Narela | | | 10.88 | 10.88 |
| 2 | Azad Pur | | | 5.44 | 5.44 |
| 3 | Badli | 20.00 | | 5.95 | 25.95 |
| 4 | DSIDC Narela-1 | | | 5.95 | 5.95 |
| 5 | GTK | | | 5.94 | 5.94 |
| 6 | Jahangirpuri | 20.00 | 10.00 | 0.00 | 30.00 |
| 7 | Bhalswa | | | 12.64 | 12.64 |
| 8 | Pitampura-I | 20.00 | | 5.04 | 25.04 |
| 9 | RG-1 | | | 5.44 | 5.44 |
| | | 100.00 | 10.00 | 62.32 | 172.32 |

| Sl. No | SUB-STATION | INSTALLED CAPACITY | | | |
|-----------|------------------------------|--------------------|--------------|---------------|---------------|
| | | 66KV | 33KV | 11KV | TOTAL |
| 21 | Gopalpur S/stn | | 30.00 | 5.04 | 35.04 |
| 1 | Hudson Lane | | | 5.95 | 5.95 |
| 2 | Wazirabad | | | 7.20 | 7.20 |
| 3 | Indra Vihar | | | 5.95 | 5.95 |
| 4 | DIFR | | | 5.44 | 5.44 |
| 5 | GTK Road | | | 5.44 | 5.44 |
| 6 | Jahangirpuri | | 10.00 | 5.95 | 15.95 |
| 7 | Civil lines | | | 7.20 | 7.20 |
| 8 | Pitam Pura-3 | | | 5.44 | 5.44 |
| 9 | SGT Nagar | | | 13.15 | 13.15 |
| 10 | Tiggipur | | | 10.88 | 10.88 |
| 11 | Model Town | | | 14.40 | 14.40 |
| 12 | Azad Pur | | | 5.44 | 5.44 |
| 13 | Dheerpur | | | 14.40 | 14.40 |
| | | 0.00 | 40.00 | 111.88 | 151.88 |
| 22 | Rohini S/stn | 40.00 | | 6.00 | 46.00 |
| 1 | Rohini Sec-22 | | | 18.08 | 18.08 |
| 2 | Rohini Sec-24 | | | 5.44 | 5.44 |
| 3 | Rohini-3 | | | 5.95 | 5.95 |
| 4 | Rohini-4 | | | 11.39 | 11.39 |
| 5 | Rohini-5 | | | 11.39 | 11.39 |
| 6 | Rohini-6 | | | 0.00 | 0.00 |
| 7 | Mangolpuri-2 | 20.00 | | 7.20 | 27.20 |
| 8 | Pitam Pura-1 | | | 5.44 | 5.44 |
| 9 | Pitam Pura-2 | | | 10.48 | 10.48 |
| 10 | Rohini DC-1 | | | 14.40 | 14.40 |
| 11 | AIR Kham pur | | | 11.90 | 11.90 |
| | | 60.00 | 0.00 | 107.67 | 167.67 |
| 23 | Kanjhawala S/stn | 20.00 | | 5.04 | 25.04 |
| 1 | Bawana Clear Water | | | 14.30 | 14.30 |
| 2 | Pooth Khoord | 20.00 | | 5.44 | 25.44 |
| 4 | Rohini -2 | | | 13.15 | 13.15 |
| | | 40.00 | 0.00 | 37.93 | 77.93 |
| 24 | BAWANA S/stn | | | | |
| 1 | Bawana S/stn No. 6 | | | 10.88 | 10.88 |
| 2 | Bawana S/stn No. 7 | | | 7.20 | 7.20 |
| | | 0.00 | 0.00 | 18.08 | 18.08 |
| 25 | Kashmerigate S/stn | | | 5.04 | 5.04 |
| 1 | Civil lines | | | 7.20 | 7.20 |
| 2 | Town Hall | | | 8.64 | 8.64 |
| 3 | Fountain | | | 5.45 | 5.45 |
| | | 0.00 | 0.00 | 26.33 | 26.33 |
| 26 | Pappankalan-II | | | | |
| 1 | DMRC | | | | 0.00 |
| 2 | HASTAL | | | 21.60 | 21.60 |
| 3 | GGSH | | | 10.80 | 10.80 |
| 4 | 66KV G-4 | | | 21.60 | 21.60 |
| | | 0.00 | 0.00 | 54.00 | 54.00 |
| 27 | Trauma Center (AIIMS) | | | | |
| 1 | AIIMS | | 13.26 | 5.04 | 18.30 |
| 2 | Trauma Center | | | 10.08 | 10.08 |
| 3 | Netaji Nagar | | | 15.12 | 15.12 |
| 4 | Sanjay Camp | | | 10.08 | 10.08 |
| 5 | Kidwai Nagar | | | 10.08 | 10.08 |
| 6 | SJ Airport | | | 5.04 | 5.04 |
| 7 | Race Course | | | 10.44 | 10.44 |
| | | 0.00 | 13.26 | 65.88 | 79.14 |

| SI. No | SUB-STATION | INSTALLED CAPACITY | | | |
|-----------|-----------------------------|--------------------|-------------|--------------|--------------|
| | | 66KV | 33KV | 11kV | TOTAL |
| 28 | MUNDKA | | | | |
| 1 | Mangolpuri-I | | | 20.35 | 20.35 |
| 2 | Rohini Sec-23 | 20.00 | | 12.64 | 32.64 |
| 3 | 66kV Mundka | | | 21.60 | 21.60 |
| | | 20.00 | 0.00 | 54.59 | 74.59 |
| 29 | DSIDC BAWANA | | | | |
| 1 | DSIDC NRL-1 | 0.00 | | | 0.00 |
| 2 | DSIDC NRL-2 | | | 16.32 | 16.32 |
| 3 | Bawana Clear Water | | | 7.30 | 7.30 |
| 4 | Bawana-1 | | | 0.00 | 0.00 |
| | | 0.00 | 0.00 | 23.62 | 23.62 |
| 30 | RIDGE VALLEY | | | | |
| 1 | Keventry Diary | | | 10.08 | 10.08 |
| 2 | Nehru Park | | | 5.04 | 5.04 |
| 3 | State Guest House | | | 5.40 | 5.40 |
| 4 | Bapu Dham | | | 15.48 | 15.48 |
| 5 | 66kV Vasant Kunj Inst. Area | | | 21.60 | 21.60 |
| | | 0.00 | 0.00 | 57.60 | 57.60 |
| 31 | IP EXTN (PRAGATI) | | | | |
| 1 | Vidyut Bhawan | | | 10.08 | 10.08 |
| 2 | Dalhousie Road | | | 5.04 | 5.04 |
| 3 | National Archives | | | 10.08 | 10.08 |
| 4 | School Lane | | | 10.44 | 10.44 |
| | | 0.00 | 0.00 | 35.64 | 35.64 |
| 32 | Wazirpur | | | | |
| 1 | Tri Nagar | | | 10.88 | 10.88 |
| 2 | Wazirpur-1 | | | 17.18 | 17.18 |
| 3 | Wazirpur-2 | | | 13.20 | 13.20 |
| 4 | Ashok vihar | | | 17.80 | 17.80 |
| 5 | Azad Pur | | | 5.44 | 5.44 |
| 6 | GTK | | | 4.80 | 4.80 |
| | | 0.00 | 0.00 | 69.30 | 69.30 |
| 33 | Peeragarhi | | | | |
| 1 | Rani Bagh | | | 5.44 | 5.44 |
| 2 | Rani Bagh cc | | | 9.60 | 9.60 |
| | | 0.00 | 0.00 | 15.04 | 15.04 |
| 34 | Rohini-II | | | | |
| 1 | Rohini-6 | | | 13.15 | 13.15 |
| 2 | Siraspur | | | 7.20 | 7.20 |
| | | 0.00 | 0.00 | 20.35 | 20.35 |

| Utility | HT | LT | Total |
|--------------|----------------|---------------|----------------|
| BYPL | 905.23 | 102.00 | 1007.23 |
| BRPL | 1308.19 | 242.00 | 1550.19 |
| TPDDL | 830.90 | 119.00 | 949.90 |
| NDMC | 259.86 | 24.00 | 283.86 |
| DTL | 753.52 | 0.00 | 753.52 |
| IPGCL (RPH) | 20.00 | 0.00 | 20.00 |
| MES | 20.10 | 0.00 | 20.10 |
| TOTAL | 4097.80 | 487.00 | 4584.80 |

20 DETAILS OF BREAK-DOWNS DURING THE MONTH OF FEBRUARY 2018

| SL NO | OCCURRENCE OF BREAK-DOWN | | DETAILS OF THE BREAKDOWN | TIME OF RESTORATION | | REMARKS |
|-------|--------------------------|-------|--|---------------------|-------|---|
| | DATE | TIME | | DATE | TIME | |
| 1 | 1.2.18 | 12:22 | 220kV PRAGATI - SARITA VIHAR CKT - I | 1.2.18 | 13:33 | AT PRAGATI : DIST PROT, ZONE-II, DIST 12.92KM. AT SARITA VIHAR : DIST PROT, DIST 1.856KM. |
| 2 | 3.2.18 | 06:52 | 220kV GOPALPUR- MANDOLACKT-I | 3.2.18 | 07:24 | AT GOPALPUR : 86. |
| 3 | 3.2.18 | 12:30 | 220kV GOPALPUR- MANDOLACKT-I | 3.2.18 | 14:14 | AT GOPALPUR : DIST PROT, DIST 4.053KM. AT MANDOLA : DIST PROT, DIST 19.81KM. |
| 4 | 3.2.18 | 15:15 | NARAINA 220/33kV 100MVA Tx-III | 3.2.18 | 15:38 | I/C TRIPPED WITHOUT INDICATION |
| 5 | 4.2.18 | 08:25 | 220kV GEETA COLONY- PATPARGANJ CKT -II | 4.2.18 | 08:32 | At Patparganj : 186, 86A&B. At Geeta Colony : No tripping |
| 6 | 4.2.18 | 08:25 | 220KV WAZIRABAD - MANDOLA CKT-III | 4.2.18 | 09:35 | At Wazirabad : Supply fail. At Mandola : Tripped on Dist prot, Zone-II, Dist 15Km. |
| 7 | 4.2.18 | 08:25 | 220kV GEETA COLONY- PATPARGANJ CKT-I | 4.2.18 | 08:39 | At Patparganj : 186, 86A&B, Dist prot, Zone-III, Dist 9.354Km. At Geeta Colony : No tripping. |
| 8 | 4.2.18 | 08:25 | 220KV WAZIRABAD - MANDOLA CKT-I | 4.2.18 | 09:35 | At Wazirabad : Supply fail. At Mandola : Tripped on Dist prot, Zone-II, Dist 15Km. |
| 9 | 4.2.18 | 14:24 | 220kV GOPALPUR-SUBZI MANDI CKT-II | 4.2.18 | 15:29 | AT GOPALPUR : DIST PROT, ZONE-I, DIST 6.208, 86, ABC PHASE. |
| 10 | 7.2.18 | 07:32 | OKHLA 220/66kV 100MVA Tx-II | 7.2.18 | 16:50 | TRIPPED ON DIFFERENTIAL. |
| 11 | 7.2.18 | 12:30 | GOPALPUR 220/33kV 100MVA Tx-I | 7.2.18 | 13:55 | TRIPPED ON 86. |
| 12 | 8.2.18 | 15:50 | GAZIPUR 220/66kV 160MVA Tx-I | 8.2.18 | 15:57 | AT GAZIPUR : BUS BAR PROT. OPERATED. |
| 13 | 8.2.18 | 15:50 | GAZIPUR 220/66kV 100MVA Tx-I | 8.2.18 | 15:57 | AT GAZIPUR : BUS BAR PROT. OPERATED. |
| 14 | 8.2.18 | 15:50 | GAZIPUR 220/66kV 100MVA Tx-II | 8.2.18 | 15:57 | AT GAZIPUR : BUS BAR PROT. OPERATED. |
| 15 | 8.2.18 | 15:50 | 220KV GAZIPUR - MAHARANIBAGH CKT. -II | 8.2.18 | 15:57 | AT GAZIPUR : BUS BAR PROT. OPERATED. |
| 16 | 9.2.18 | 18:29 | 220KV GAZIPUR - MAHARANIBAGH CKT. -II | 9.2.18 | 19:24 | AT GAZIPUR : WITHOUT INDICATION AT MAHARANI BAGH : 86. |
| 17 | 11.2.18 | 19:00 | LODHI RD 220/33kV 100MVA Tx-I | 12.2.18 | 19:22 | 86 |
| 18 | 12.2.18 | 01:34 | 400kV Bawana-Mundka Ckt-I | 12.2.18 | 08:19 | AT BAWANA : TRIPPED ON OVER VOLTAGE. |
| 19 | 12.2.18 | 11:20 | 220kV BAWANA - KANJHAWALA CKT - 1 | 12.2.18 | 18:09 | AT KHANJAWALA : Y PHASE JUMPER BROKEN ON TOWER NO. 6 AT BAWANA :TRIPPED ON DIFFERENTIAL. |
| 20 | 12.2.18 | 11:20 | 220kV BAWANA - KANJHAWALA CKT- 2 | 12.2.18 | 18:09 | AT KHANJAWALA : Y PHASE JUMPER BROKEN ON TOWER NO. 6 AT BAWANA :TRIPPED ON DIFFERENTIAL. |
| 21 | 12.2.18 | 14:20 | 220KV GAZIPUR - MAHARANIBAGH CKT. -I | 12.2.18 | 14:45 | AT GAZIPUR : TRIPPED WITHOUT INDICATION. |
| 22 | 12.2.18 | 14:20 | GAZIPUR 220/66kV 100MVA Tx-II | 12.2.18 | 14:45 | 86 |
| 23 | 12.2.18 | 14:20 | GAZIPUR 220/66kV 100MVA Tx-I | 12.2.18 | 14:45 | TRIPPED WITHOUT INDICATION. |
| 24 | 12.2.18 | 14:20 | GAZIPUR 220/66kV 160MVA Tx-I | 12.2.18 | 14:45 | TRIPPED WITHOUT INDICATION. |
| 25 | 12.2.18 | 14:54 | 220kV BAWANA-DSIIDC BAWANA CKT-II | 12.2.18 | 19:44 | TRIPPED ON 86A&B. |
| 26 | 12.2.18 | 14:54 | BAWANA 400/220kV 315MVA ICT-VI | 12.2.18 | 19:44 | TRIPPED ON 86A&B. |
| 27 | 13.2.18 | 12:10 | PATPARGANJ 220/33kV 100MVA Tx-III | 13.2.18 | 12:30 | TRIPPED ON 195CB. |
| 28 | 13.2.18 | 13:10 | GAZIPUR 66/11kV, 20MVA Tx-II | 13.2.18 | 13:30 | 86, RLV. |

| SL NO | OCCURRENCE OF BREAK-DOWN | | DETAILS OF THE BREAKDOWN | TIME OF RESTORATION | | REMARKS |
|-------|--------------------------|-------|---|---------------------|-------|---|
| | DATE | TIME | | DATE | TIME | |
| 29 | 14.2.18 | 08:49 | PRAGATI 220/66kV 160MVA Tx-I | 14.2.18 | 15:14 | R PHASE JUMPER OF 220KV BUS COUPLER CONNECTING 220KV BUS-II SNAPPED AT PRAGATI. |
| 30 | 14.2.18 | 08:49 | PRAGATI 220/66kV 160MVA Tx-II | 14.2.18 | 08:58 | R PHASE JUMPER OF 220KV BUS COUPLER CONNECTING 220KV BUS-II SNAPPED AT PRAGATI. |
| 31 | 14.2.18 | 08:49 | 220kV PRAGATI - PARK STREET CKT-II | 14.2.18 | 09:17 | R PHASE JUMPER OF 220KV BUS COUPLER CONNECTING 220KV BUS-II SNAPPED AT PRAGATI. |
| 32 | 14.2.18 | 08:49 | 220kV MAHARANI BAGH - PRAGATI CKT | 14.2.18 | 09:04 | R PHASE JUMPER OF 220KV BUS COUPLER CONNECTING 220KV BUS-II SNAPPED AT PRAGATI. |
| 33 | 14.2.18 | 08:49 | 220kV PRAGATI - SARITA VIHAR CKT - I | 14.2.18 | 09:03 | R PHASE JUMPER OF 220KV BUS COUPLER CONNECTING 220KV BUS-II SNAPPED AT PRAGATI. |
| 34 | 14.2.18 | 08:49 | 220kV PRAGATI - PARK STREET CKT-I | 14.2.18 | 09:08 | R PHASE JUMPER OF 220KV BUS COUPLER CONNECTING 220KV BUS-II SNAPPED AT PRAGATI. |
| 35 | 14.2.18 | 08:49 | 220kV PRAGATI - I.P.CKT - II | 14.2.18 | 08:54 | R PHASE JUMPER OF 220KV BUS COUPLER CONNECTING 220KV BUS-II SNAPPED AT PRAGATI. |
| 36 | 14.2.18 | 08:49 | 220kV PRAGATI - I.P.CKT - I | 14.2.18 | 08:54 | R PHASE JUMPER OF 220KV BUS COUPLER CONNECTING 220KV BUS-II SNAPPED AT PRAGATI. |
| 37 | 14.2.18 | 12:47 | 220kV BAMNAULI-PAPPANKALAN-I CKT-I | 14.2.18 | 17:38 | AT PAPAN KALAN-I : ISOLATOR REPLACEMENT. |
| 38 | 14.2.18 | 17:46 | 220kV MAHARANIBAGH-MASJID MOTH CKT-II | 14.2.18 | 18:28 | AT MAHARANI BAGH : 86 |
| 39 | 14.2.18 | 17:46 | 220kV MAHARANI BAGH - SARITA VIHAR CKT | 14.2.18 | 17:48 | AT MAHARANI BAGH : 86 |
| 40 | 14.2.18 | 17:46 | 220kV Maharani Bagh- Electric Lane Ckt-II | 14.2.18 | 19:48 | AT MAHARANI BAGH : 86 |
| 41 | 14.2.18 | 17:50 | 220KV GAZIPUR - MAHARANIBAGH CKT. -I | 14.2.18 | 18:01 | AT MAHARANI BAGH : 86 |
| 42 | 14.2.18 | 09:00 | PARKSTREET 220/66kV 100MVA Tx-II | 14.2.18 | 11:35 | E/F. |
| 43 | 14.2.18 | 17:50 | GAZIPUR 220/66kV 100MVA Tx-I | 14.2.18 | 18:01 | 86 |
| 44 | 15.2.18 | 04:35 | GAZIPUR 66/11kV, 20MVA Tx-II | 15.2.18 | 18:45 | 86 |
| 45 | 15.2.18 | 11:55 | 220kV PRAGATI - I.P.CKT - II | 15.2.18 | 12:08 | AT PARGATI : TRIPPED WITHOUT INDICATION. |
| 46 | 15.2.18 | 15:05 | 220kV NARAINA-RIDGE VALLEY CKT-I | 15.2.18 | 15:46 | AT NARAINA : SPS OPERATED, 186. AT RIDGE VALLEY : CKT. DID NOT TRIP. |
| 47 | 15.2.18 | 15:05 | 220 KV TRAUMA CENTER-RIDGE VALLEY CKT-1 | 15.2.18 | 15:10 | AT TRAUMA CENTER : LINE DIFFERENTIAL. AT RIDGE VALLEY : NO TRIPPING. |
| 48 | 15.2.18 | 15:05 | 220 KV TRAUMA CENTER-RIDGE VALLEY CKT-2 | 15.2.18 | 15:10 | AT TRAUMA CENTER : 86B, DIST PROT, ZONE-I. AT RIDGE VALLEY : DIFFERENTIAL. |
| 49 | 16.2.18 | 06:13 | GOPALPUR 220/33kV 100MVA Tx-I | 16.2.18 | 07:10 | 186 |
| 50 | 18.2.18 | 00:40 | PARKSTREET 220/66kV 100MVA Tx-II | 18.2.18 | 05:37 | E/F. |
| 51 | 18.2.18 | 12:07 | OKHLA 220/66kV 100MVA Tx-II | 18.2.18 | 18:43 | TRIPPED ON DIFFERENTIAL RELAY. |
| 52 | 18.2.18 | 12:10 | 220kV GAZIPUR - BTPS CKT | 18.2.18 | 17:33 | AT BTPS: DIST PROT, ZONE-I, DIST 16.5KM. |
| 53 | 18.2.18 | 20:30 | MASJID MOTH 220/33kV 100MVA Tx-II | 18.2.18 | 21:32 | E/F, O/C, 86 |

| SL NO | OCCURRENCE OF BREAK-DOWN | | DETAILS OF THE BREAKDOWN | TIME OF RESTORATION | | REMARKS |
|-------|--------------------------|-------|---|---------------------|-------|---|
| | DATE | TIME | | DATE | TIME | |
| 54 | 19.2.18 | 11:35 | 220kV DSIIDC BAWANA-NARELA CKT-II | 19.2.18 | 17:08 | AT NARELA : TRIPPED WITHOUT INDICATION. |
| 55 | 19.2.18 | 12:52 | GOPALPUR 220/33kV 100MVA Tx-I | 19.2.18 | 16:46 | 186, PRV. |
| 56 | 19.2.18 | 14:05 | 220kV WAZIRABAD - KASHMERE GATE CKT-II | 19.2.18 | 17:49 | AT WAZIRABAD : DIST PROT, ZONE-II, DIST 4.945KM, R PHASE. |
| 57 | 20.2.18 | 18:20 | 220kV NARELA - MANDOLA CKT-II | 20.2.18 | 18:26 | AT NARELA : 86. |
| 58 | 20.2.18 | 18:21 | 220kV NARELA - MANDOLA CKT-I | 20.2.18 | 18:31 | AT NARELA : OVERLOAD. |
| 59 | 21.2.18 | 12:28 | 220kV MEHRAULI - BTPS CKT. - II | 21.2.18 | 20:27 | At BTPS : Dist prot, Zone-I, dist 5.5Kms., RY Phase. At Mehrauli :ckt. did not trip |
| 60 | 21.2.18 | 12:28 | 220kV MAHARANI BAGH - MASJID MOTH CKT-II | 21.2.18 | 14:10 | At Maharani Bagh : Y&B Phase trip, O/V, |
| 61 | 21.2.18 | 12:28 | 220kV OKHLA - BTPS CKT. - II | 21.2.18 | 13:41 | At BTPS : E/F. At Okhla : ckt. did not trip |
| 62 | 21.2.18 | 12:28 | 220kV MEHRAULI - BTPS CKT. - I | 21.2.18 | 20:03 | At BTPS : RYB Phase, Zone-III. At Mehrauli : ckt. did not trip |
| 63 | 21.2.18 | 12:29 | 220kV PRAGATI - SARITA VIHAR CKT - I | 21.2.18 | 12:59 | At Sarita Vihar : Dist prot, Zone-I, 186A&B. At Pragati : Ckt. did not trip. |
| 64 | 21.2.18 | 12:30 | 220kV MAHARANI BAGH - SARITA VIHAR CKT | 21.2.18 | 15:52 | At Sarita Vihar: RYB Phase trip, Dist prot, Zone-I, Dist 4.667Kms. At Maharani Bagh: RYB Phase trip. |
| 65 | 23.2.18 | 20:46 | PARKSTREET 220/33kV 100MVA Tx-I | 24.2.18 | 00:38 | DIFFERENTIAL. |
| 66 | 24.2.18 | 04:30 | INDRAPRASTHA POWER 220/33kV 100MVA Tx-III | 24.2.18 | 14:40 | 86, 186 |
| 67 | 24.2.18 | 12:57 | 220kV MAHARANI BAGH - PRAGATI CKT | 24.2.18 | 15:47 | AT PRAGATI : DIST PROT, ZONE-I, ACTIVE GROUP -I, DIST 5.548KM. AT MAHARANI BAGH : DIST PROT, DIST 5.7KM, R PHASE. |
| 68 | 24.2.18 | 12:58 | OKHLA 220/66kV 100MVA Tx-II | 24.2.18 | 15:16 | TRIPPED ON DIFFERENTIAL, 86, RYB PHASE. |
| 69 | 25.2.18 | 06:32 | NARAINA 33kV MAYAPURI CKT-II | 26.2.18 | 14:15 | CT BLAST. |
| 70 | 25.2.18 | 15:43 | 220kV WAZIRABAD - KASHMERE GATE CKT-II | 25.2.18 | 21:40 | AT WAZIRABAD : DIST PROT, ZONE-I, DIST 4.859KM AT KASHMIRI GATE : CKT .DID NOT TRIP. |
| 71 | 25.2.18 | 19:20 | 220kV PRAGATI - SARITA VIHAR CKT - I | 25.2.18 | 22:05 | AT SARITA VIHAR : POLE DISCRIPANCY, CVT AVAILABLE. |
| 72 | 26.2.18 | 11:35 | 220kV MAHARANI BAGH - SARITA VIHAR CKT | 26.2.18 | 11:59 | AT SARITA VIHAR : DIST PROT, ZONE-I, DIST 4.979KM AT MAHARANI BAGH : DIST PROT, RY PHASE, DIST 4.8KM. |
| 73 | 28.2.18 | 06:50 | INDRAPRASTHA POWER 220/33kV 100MVA Tx-III | 28.2.18 | 07:26 | I/C TRIPPED ON O/C |
| 74 | 28.2.18 | 06:50 | INDRAPRASTHA POWER 220/33kV 100MVA Tx-II | 28.2.18 | 07:25 | I/C TRIPPED ON 86 |
| 75 | 28.2.18 | 06:50 | INDRAPRASTHA POWER 220/33kV 100MVA Tx-I | 28.2.18 | 07:23 | I/C TRIPPED ON E/F |
| 76 | 28.2.18 | 06:50 | INDRAPRASTHA POWER 33kV KILOKRI CKT (BAY-1) | 28.2.18 | 13:20 | R PHASE COMMON JUMPER INSULATOR DISC BROKEN. |
| 77 | 28.2.18 | 14:10 | 220kV PRAGATI - SARITA VIHAR CKT - I | 28.2.18 | 17:23 | AT SARITA VIHAR : POLE DISCREPANCY. |

20 DETAILS OF UNDER FREQUENCY RELAY OPERATIONS IN DELHI POWER SYSTEM DURING THE MONTH OF FEBRUARY 2018

| DATE | S. N. | TIME | | Name of Grid | NAME OF AFFECTED FEEDERS | MODE | LOAD RELIEF IN MW |
|------|-------|------|----|--------------|--------------------------|------|-------------------|
| | | OUT | IN | | | | |
| | | | | | | | |
| | | | | NIL | | | |
| | | | | | | | |
| | | | | | | | |